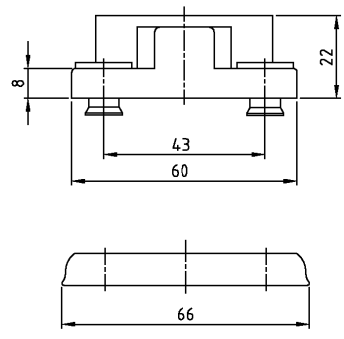
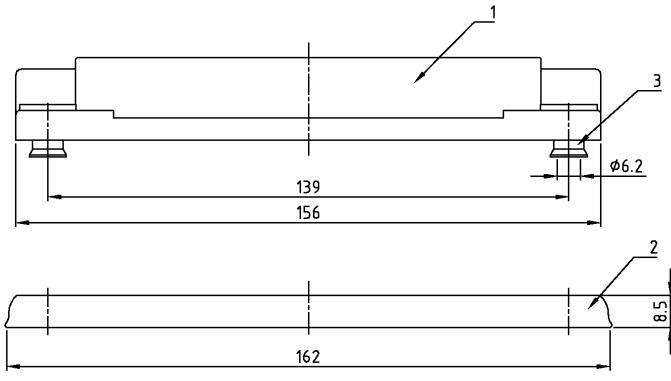


THIS DRAWING IS UNPUBLISHED.
VERTRAULICHE UNVERÖFFENTLICHTE ZEICHNUNG
© COPYRIGHT 1994
RELEASED FOR PUBLICATION
FRIEL PUER VERÖFFENTLICHUNG
BY AMP INCORPORATED. ALL RIGHTS RESERVED.
ALLE RECHTE VORBEHALTEN

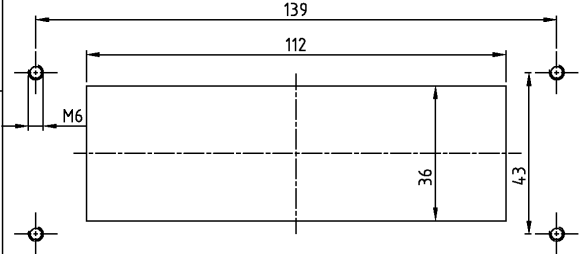
MATED WITH:
PASSEND ZU
Bg.8

LOC	DIST	P	LTR	REVISIONS ÄNDERUNGEN	DATE	DWR	APVD	
A1	-							
PROJEKT NR.: A3				Zeichnung bearbeitet Eg00-3822-02		25.11.02	SR	SM

- Notes:
- ⚠ Material: Housing: aluminium diecasting alloy
 - ⚠ Seals: Neoprene
 - ⚠ Surface: aluminiumoxid + Varnisch black
 - ⚠ Varnish on the inside not necessarily
- Bemerkungen:
- ⚠ Material: Gehäuse: Alu-Druckfuß-Legierung
 - ⚠ Dichtungen: Neoprene
 - ⚠ Oberfläche: aluminiumoxid + Lackierung schwarz
 - ⚠ Lackierung im Gehäuseinnere ist nicht notwendig



Panel cut-out
Montageausschnitt



QTY	DESCRIPTION / BENENNUNG	MATERIAL	SURFACE / OBERFLÄCHE	COLOR / FARBE	ITEM NO. Pos.	NOTES / BEMERKUNGEN
4	Anschlaghülse	V2A	-	-	3	-
1	Flanschdichtung Bg8	Neoprene	-	black/schwarz	2	-
1	Anbaugehäuse HIP-K-C	aluminium/ALU	Hard Coat	black/schwarz	1	-
0-1	DESCRIPTION / BENENNUNG	MATERIAL	SURFACE / OBERFLÄCHE	COLOR / FARBE	ITEM NO. Pos.	NOTES / BEMERKUNGEN

HIP-K-1.24.764-AG.M6.D ORDERING TEXT / BESTELLTEXT	<small>THIS DRAWING IS A CONTROLLED DOCUMENT FOR AMP CORPORATION. IT IS SUBJECT TO CHANGE AND THE CONTROLLING ENGINEERING ORGANIZATION SHOULD BE CONTACTED FOR THE LATEST REVISIONS. OTHER DOCUMENTS SHOULD NOT BE USED UNLESS SPECIFICALLY APPROVED BY AMP CORPORATION. ANY TECHNICAL PORTFOLIO, ORDER, AND VISUALS ARE THE PROPERTY OF AMP CORPORATION AND WILL BE DESTROYED UPON REQUEST BY AMP CORPORATION.</small>	DWN Gräf 30.03.99	HTS Elektrotechnik 53819 Neunkirchen, Germany
	DIMENSIONS: DIMENSIONEN: mm	TOLERANCES UNLESS OTHERWISE SPECIFIED: ALLGEMEINTOLERANZEN h, ISO 2875 p, ISO 2768 - mH - E r, DIN 16901 - 14.0 0 PLC 1 PLC 2 PLC 3 PLC	
MATERIAL FINISH / WINKEL FINISH / OBERFLÄCHE / FARBE	ANGLES / WINKEL FINISH / OBERFLÄCHE / FARBE	PRODUCT SPEC PRODUKTSPEZ. APPLICATION SPEC VERARBEITUNGSSPEZ.	NAME Surface mounted housing bottom entry Anbaugehäuse HIP-K-1.24.764-AG.M6.D
		WEIGHT GEWICHT	SIZE A3
			CAGE CODE 00779
			DRAWING NO. 1108533
			RESTRICTED TO NUR FUER
			SCALE 1:1
			SHEET 1
			OF 1
			REV. A3