

4

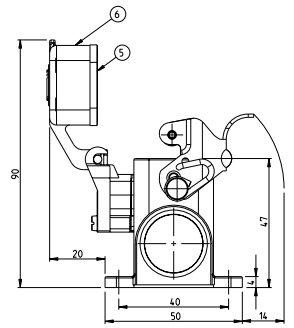
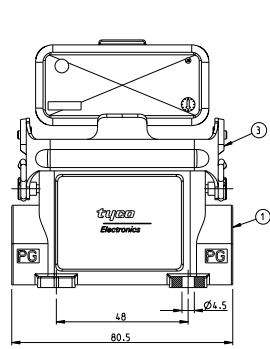
3

2

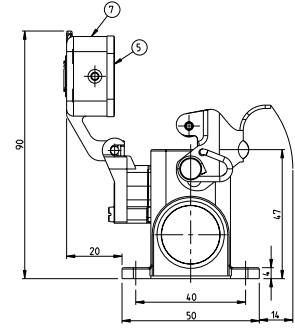
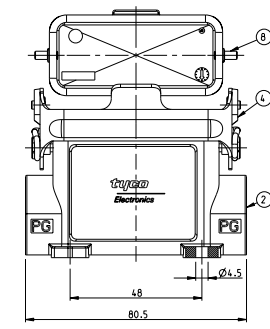
1

THIS DRAWING IS UNPUBLISHED. RELEASED FOR PUBLICATION
 BY TYCO ELECTRONICS CORPORATION. ALL RIGHTS RESERVED.
 2000

PN 1-2

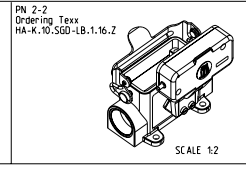
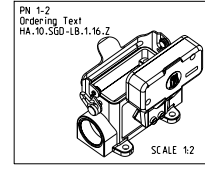


PN 2-2



| LOC | DIST | REV | DESCRIPTION | DATE | BY | APP'D |
|-----|------|-----|-------------------------------|-------------|----|-------|
| A1 | - | P | LYR | | | |
| | | B2 | RELEASED AS PER ECR-09-005170 | 05.MAR.2009 | GG | TS |

- NOTES
- ▲ MATERIAL:HOUSING-ALUMINIUM DIECASTING ALLOY
 - ▲ SEALS-NEOPRENE
 - ▲ SURFACE-VARNISH-GREY
 - 3 PACKAGING QUANTITIES PER BOX
 - 4 VARNISH ON THE INSIDE NOT NECESSARY



| QTY | DESCRIPTION | MATERIAL | SURFACE | OLD ITEM NO | REMARKS |
|----------|-------------------------|-----------------|-----------------|-------------|---------|
| 2 | CLIP BOLT | STAINLESS STEEL | | BLANK | 8 - |
| 1 | COVER HA 10 | ALUMINIUM | ALUMINIUM OXIDE | BLACK | 7 - |
| 1 | COVER HA 10 | ALUMINIUM | | GREY | 6 - |
| 1 | PROFILE SEAL | NEOPRENE | | BLACK | 5 - |
| 1 | CLIP | STAINLES STEEL | | BLANK | 4 - |
| 1 | CLIP | STEEL | ZINC PLATED | BLUE | 3 - |
| 1 | SURFACE MOUNTED HOUSING | ALUMINIUM | ALUMINIUM OXIDE | BLACK | 2 - |
| 1 | SURFACE MOUNTED HOUSING | ALUMINIUM | | GREY | 1 - |
| 2-2(1-2) | DESCRIPTION | MATERIAL | SURFACE | OLD ITEM NO | REMARKS |

| | | | | | |
|-------------------|--|--|--|--|--|
| DIMENSIONS: mm | | TO: SRINIVAS 02.27.2006 FROM: S. KUMAR 02.27.2006 PRODUCT SPEC | | NAME: SURFACE MOUNTED HOUSING-SIDE ENTRY HA-10.SGD-LB-1.16.Z | |
| MATERIAL: | | APPLICATION SPEC: | | SIZE CASE CODE DRAWING NO: A2 100779 C-1102128 | |
| FINISH: | | WEIGHT: | | RESTRICTED TO: | |
| CUSTOMER DRAWING | | SCALE: 1:1 | | SHEET 1 OF 1 REV B2 | |

AMP 1471-9 REV 31MAR2000
 POLYMER DRAWING