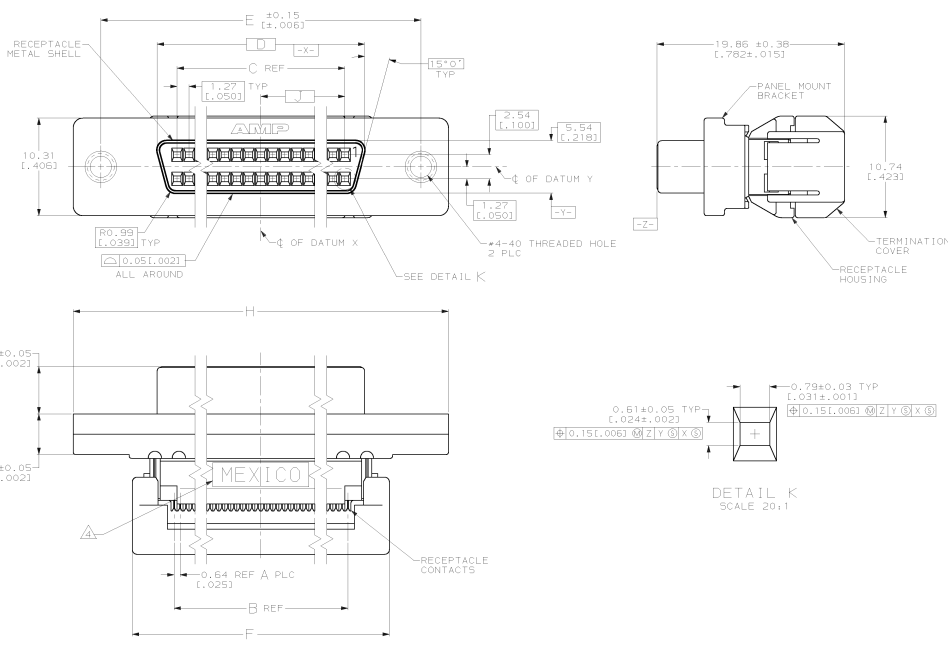


DRAWING MADE IN THE AMP PRODUCTION
 THIS DRAWING IS UNPUBLISHED. RELEASED FOR PUBLICATION
 © COPYRIGHT 19 BY AMP INCORPORATED. ALL INTERNATIONAL RIGHTS RESERVED.

REV	ISS	DATE	DESCRIPTION	DATE	APP
GP	00				
J			SUPERCEDED -S-,7 PER OSIC-0019-01		CC



- ⚠ MATERIAL:
 RECEPTACLE CONTACTS- PHOSPHOR BRONZE
 RECEPTACLE METAL SHELL- STEEL
 PANEL MOUNT BRACKET- ZINC
 RECEPTACLE HOUSING- UL 94V-0 RATED THERMOPLASTIC, COLOR, BLACK.
 TERMINATION COVER- UL 94V-0 RATED THERMOPLASTIC, COLOR, SEE TABLE.
- ⚠ PLATING:
 RECEPTACLE CONTACTS- 0.76 μm [0.00030] MINIMUM GOLD PLATE IN CONTACT AREA, 1.27 μm [0.00050] MINIMUM BRIGHT TIN-LEAD PLATE IN TERMINATION AREA, ALL OVER 1.27 μm [0.00050] MINIMUM NICKEL.
 RECEPTACLE METAL SHELL- 5.08 μm [0.000200] MINIMUM NICKEL OVER 1.27 μm [0.00050] MINIMUM COPPER.
 PANEL MOUNT BRACKET- 5.08 μm [0.000200] MINIMUM NICKEL OVER 7.62 μm [0.000300] MINIMUM COPPER.
- ⚠ RECOMMENDED WIRE:
 #30 AWG STRANDED RIBBON CABLE- SEE AMP DRAWING NO. 786108.
 #30 AWG SOLID RIBBON CABLE- SEE AMP DRAWING NO. 786109.
- ⚠ OPTIONAL MARKING IN THIS AREA, EITHER SIDE.

SUPERCEDED BY 390378-7
SUPERCEDED BY 390378-5

PACKAGING	TERMINATION COVER	RIBBON CABLE	J	H	F	E	D	C	B	A	NO. OF POS.	PART NO.
TUBE	BLACK	30 AWG	20.96 [0.825]	63.88 [2.515]	51.38 [2.023]	58.04 [2.285]	46.13 [1.816]	41.91 [1.650]	42.54 [1.675]	67	68	1-786096-7
TRAY	BLACK	30 AWG	20.96 [0.825]	63.88 [2.515]	51.38 [2.023]	58.04 [2.285]	46.13 [1.816]	41.91 [1.650]	42.54 [1.675]	67	68	786096-7
TRAY	BLACK	30 AWG	15.24 [0.600]	52.45 [2.065]	39.95 [1.573]	46.61 [1.835]	34.70 [1.366]	30.48 [1.200]	31.12 [1.225]	49	50	786096-5

DO NOT SCALE PRINT. UNLESS SPECIFIED DIMENSIONS IN mm (INCHES) PUSHPINS: 0.1 2 P.LC SEE # 813 1.093 3 P.LC DEC # MOLDS # -	DR 09/30/89 P.LC DRINK CHR 02/17/92 NAME DW15	AMP Incorporated Harrisburg, PA 17105-3608
MATERIAL ⚠	APPD 2-13-92 1.4650MM PRODUCT SPEC -	NAME RECEPTACLE ASSEMBLY, HIGH NORMAL FORCE, FLAT TOP, PANEL MOUNT, .025 CENTERLINE, AMPLIMITE™ .050 Series
FINISH ⚠	APPLICATION SPEC - RETURN -	SIZE D 00779 SCALE 5:1
		DRAWING NO. 786096 SHEET 1 OF 1

23-WF-01 10.55.29 amp12184 /home/amp12184/ctdmod

CUSTOMER DRAWING