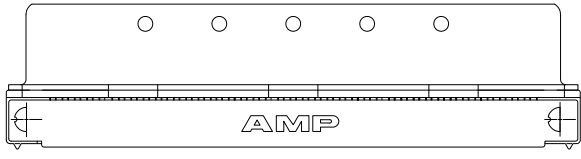
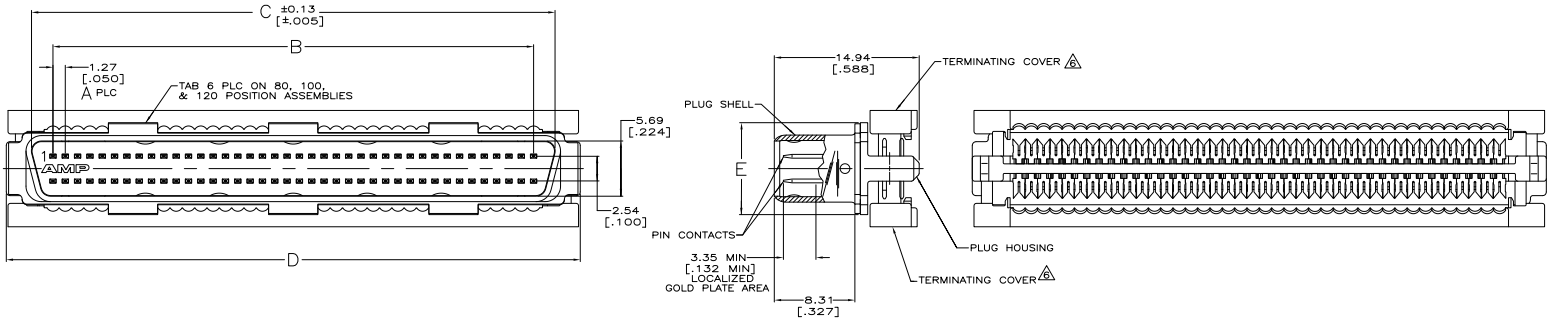


THIS DRAWING IS UNAPPROVED  
 ALL RIGHTS RESERVED

REV	DATE	DESCRIPTION	BY	CHK
00				
A1		REVISED PER EDD-11-004835	11MR11	RK HMR



- ▲ PIN CONTACTS: PHOSPHOR BRONZE.  
 PLUG SHELL: STEEL.  
 PLUG HOUSING AND TERMINATING COVERS: THERMOPLASTIC, BLACK, UL V-0 RATED.
- ▲ 0.25µm [.000010] MIN TIN-NICKEL OVER 3.81µm [.000150] MIN NICKEL OVER 2.54µm [.000100] MIN COPPER.
- ▲ EITHER 0.76µm [.000030] MIN GOLD PLATE OR GOLD FLASH OVER PALLADIUM NICKEL PLATE, 0.76µm [.000030] MIN TOTAL IN LOCALIZED PLATE AREA, 1.52µm [.000060] MIN TIN-LEAD IN TERMINATION AREA, ALL OVER 1.27µm [.000050] MIN NICKEL.
- ▲ GOLD FLASH IN LOCALIZED GOLD PLATE AREA, 1.52µm [.000060] MIN TIN-LEAD IN TERMINATION AREA, ALL OVER 1.27µm [.000050] MIN NICKEL.
- ▲ 500 CYCLES DURABILITY PER 108-1228 DOES NOT APPLY FOR CONNECTORS WITH LESS THAN 0.76µm [.000030] THICK GOLD.
- ▲ TERMINATING COVERS ARE PACKAGED SEPARATELY.
- 7. RECOMMENDED WIRE: 28 AWG OR 30 AWG, SOLID OR 7 STRAND, PVC INSULATION WITH A 0.74-0.91 [.029-.036] INSULATION DIAMETER.
- ▲ 2.54µm - 7.62µm [.000100 - .000300] TIN-NICKEL OVER 3.81µm - 5.08µm [.000150 - .000200] NICKEL OVER 2.54µm [.000100] MIN COPPER.
- ▲ 5.08µm - 10.16µm [.000200 - .000400] TIN-LEAD OVER 1.27µm - 2.54µm [.000050 - .000100] COPPER. LUBRICATED AFTER PLATING.
- ▲ PLATED WITH EITHER 0.76µm [.000030] MIN GOLD PLATE OR GOLD FLASH OVER PALLADIUM NICKEL PLATE, 0.76µm [.000030] MIN TOTAL IN LOCALIZED PLATE AREA, 3.00µm [.000115] MIN TIN IN TERMINATION AREA, ALL OVER 1.27µm [.000050] MIN NICKEL.

SUPERSEDED BY 5749621-9	9.47 [.373]	71.86 [2.829]	66.60 [2.622]	62.23 [2.450]	49	▲	▲	100	1-749621-8	
SUPERSEDED BY 5749621-5	7.44 [.293]	40.11 [1.579]	34.85 [1.372]	30.48 [1.200]	24	▲	▲	50	1-749621-7	
	7.44 [.293]	51.54 [2.029]	46.28 [1.822]	41.91 [1.650]	33	▲	▲	68	1-749621-6	
OBSOLETE	7.44 [.293]	40.11 [1.579]	34.85 [1.372]	30.48 [1.200]	24	▲	▲	50	1-749621-5	
OBSOLETE	7.44 [.293]	31.22 [1.229]	25.96 [1.022]	21.59 [.850]	17	▲	▲	36	1-749621-1	
OBSOLETE	9.47 [.373]	84.56 [3.329]	79.30 [3.122]	74.93 [2.950]	59	▲	▲	120	1-749621-0	
OBSOLETE	9.47 [.373]	71.89 [2.829]	66.60 [2.622]	62.23 [2.450]	49	▲	▲	100	749621-9	
	9.47 [.373]	59.16 [2.329]	53.90 [2.122]	49.53 [1.950]	39	▲	▲	80	749621-8	
	7.44 [.293]	51.54 [2.029]	46.28 [1.822]	41.91 [1.650]	33	▲	▲	68	749621-7	
OBSOLETE	7.44 [.293]	46.46 [1.829]	41.20 [1.622]	36.83 [1.450]	29	▲	▲	60	749621-6	
SUPERSEDED BY 5749621-5	7.44 [.293]	40.11 [1.579]	34.85 [1.372]	30.48 [1.200]	24	▲	▲	50	749621-5	
OBSOLETE	7.44 [.293]	33.76 [1.329]	28.50 [1.122]	24.13 [.950]	19	▲	▲	40	749621-4	
OBSOLETE	7.44 [.293]	26.14 [1.029]	20.86 [.822]	16.51 [.650]	13	▲	▲	28	749621-3	
	7.44 [.293]	24.87 [.979]	19.61 [.772]	15.24 [.600]	12	▲	▲	26	749621-2	
OBSOLETE	7.44 [.293]	21.06 [.829]	15.80 [.622]	11.43 [.450]	9	▲	▲	20	749621-1	
	E	D	C	B	A	SH	FIN	FIN	NO OF POSN	PART NUMBER

THIS DRAWING IS A CONTROLLED DOCUMENT.		REV. CONTROL	DATE	TE Connectivity	
INCHES	UNLESS OTHERWISE SPECIFIED	108-1228	▲	KIT, PLUG ASSEMBLY, AMPLIMITE .050 Series	
DECIMALS	UNLESS OTHERWISE SPECIFIED	114-40029	▲	SIZE	DATE SIZE DRAWING NO
FRACTIONS	UNLESS OTHERWISE SPECIFIED	114-40029	▲	SIZE	DATE SIZE DRAWING NO
ANGLE	UNLESS OTHERWISE SPECIFIED	114-40029	▲	SIZE	DATE SIZE DRAWING NO
WELDING	UNLESS OTHERWISE SPECIFIED	114-40029	▲	SIZE	DATE SIZE DRAWING NO
OTHER	UNLESS OTHERWISE SPECIFIED	114-40029	▲	SIZE	DATE SIZE DRAWING NO
OTHER	UNLESS OTHERWISE SPECIFIED	114-40029	▲	SIZE	DATE SIZE DRAWING NO
OTHER	UNLESS OTHERWISE SPECIFIED	114-40029	▲	SIZE	DATE SIZE DRAWING NO
OTHER	UNLESS OTHERWISE SPECIFIED	114-40029	▲	SIZE	DATE SIZE DRAWING NO
OTHER	UNLESS OTHERWISE SPECIFIED	114-40029	▲	SIZE	DATE SIZE DRAWING NO