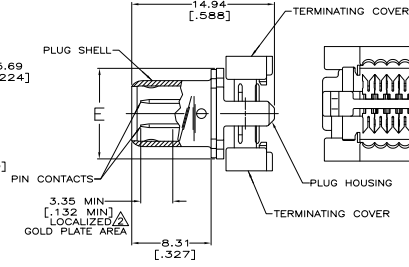
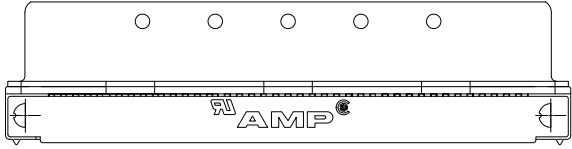
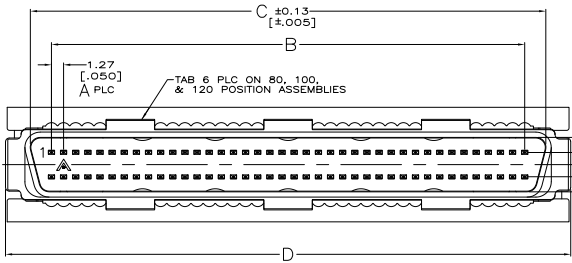


THIS DRAWING IS UNAPPROVED FOR PRODUCTION  
 ALL WORK REQUIRED

REV	DATE	DESCRIPTION	BY	CHK
00				
01		REVISED PER ECO-11-004855	11MM11	RK HMR



SUPERSEDED BY 5749111-8	△	9.47 [.373]	71.86 [2.829]	66.60 [2.622]	62.23 [2.450]	49	100	1-749111-4
SUPERSEDED BY 5749111-4	△	7.44 [.293]	40.11 [1.579]	34.85 [1.372]	30.48 [1.200]	24	50	1-749111-3
SUPERSEDED BY 5749111-3	△	7.44 [.293]	33.76 [1.329]	28.50 [1.122]	24.13 [.950]	19	40	1-749111-2
OBSOLETE	△	7.44 [.293]	31.22 [1.229]	25.96 [1.022]	21.59 [.850]	17	36	1-749111-1
SUPERSEDED BY 1-5749111-0	△	7.44 [.293]	24.87 [.971]	19.61 [.772]	15.24 [.600]	12	26	1-749111-0
SUPERSEDED BY 5749111-9	△	9.47 [.373]	84.56 [3.329]	79.30 [3.122]	74.93 [2.950]	59	120	749111-9
	△	9.47 [.373]	71.86 [2.829]	66.60 [2.622]	62.23 [2.450]	49	100	749111-8
SUPERSEDED BY 5749111-7	△	9.47 [.373]	59.16 [2.329]	53.90 [2.122]	49.53 [1.950]	39	80	749111-7
	△	7.44 [.293]	51.54 [2.029]	46.28 [1.822]	41.91 [1.650]	33	68	749111-6
OBSOLETE	△	7.44 [.293]	46.46 [1.829]	41.20 [1.622]	36.83 [1.450]	29	60	749111-5
SUPERSEDED BY 5749111-4	△	7.44 [.293]	40.11 [1.579]	34.85 [1.372]	30.48 [1.200]	24	50	749111-4
OBSOLETE	△	7.44 [.293]	33.76 [1.329]	28.50 [1.122]	24.13 [.950]	19	40	749111-3
OBSOLETE	△	7.44 [.293]	26.14 [1.029]	20.88 [.822]	16.51 [.650]	13	28	749111-2
OBSOLETE	△	7.44 [.293]	21.06 [.829]	15.80 [.622]	11.43 [.450]	9	20	749111-1

- △ MATERIAL:  
 PIN CONTACTS - PHOSPHOR BRONZE.  
 PLUG SHELL - STEEL.  
 PLUG HOUSING & TERMINATING COVERS - UL V-O RATED THERMOPLASTIC, COLOR: BLACK.
- △ FINISH:  
 PIN CONTACTS - EITHER 0.76µm [.000030] MIN GOLD PLATE OR GOLD FLASH OVER PALLADIUM NICKEL PLATE, 0.76µm [.000030] MIN TOTAL IN LOCALIZED PLATE AREA, 1.52µm [.000060] MIN TIN-LEAD IN TERMINATION AREA, ALL OVER 1.27µm [.000050] MIN NICKEL.  
 PLUG SHELL - 0.25µm [.000010] MIN TIN-NICKEL OVER 3.81µm [.000150] MIN NICKEL OVER 2.54µm [.000100] MIN COPPER.
- 3. RECOMMENDED WIRE, 28 AWG OR 30 AWG, SOLID OR 7 STRAND, PVC INSULATION WITH A 0.74-0.91 [.029-.036] INSULATION DIAMETER.
- △ FINISH:  
 PIN CONTACTS - PLATED WITH EITHER 0.76µm [.000030] MIN GOLD PLATE OR GOLD FLASH OVER PALLADIUM NICKEL PLATE, 0.76µm [.000030] MIN TOTAL IN LOCALIZED PLATE AREA, 3.00µm [.000118] MIN TIN IN TERMINATION AREA, ALL OVER 1.27µm [.000050] MIN NICKEL.  
 PLUG SHELL - 0.25µm [.000010] MIN TIN-NICKEL OVER 3.81µm [.000150] MIN NICKEL OVER 2.54µm [.000100] MIN COPPER.

THIS DRAWING IS A CONTROLLED DOCUMENT. IN A MCGRAW-HILL SYSTEM

FINISH E D C B A NO OF PART NO

ASSEMBLY: PLUG ASSEMBLY, AMPULITE 1000 Series

REVISED BY: 108-1228

DATE: 11-14-0029

REVISED BY: 100779

CUSTOMER DRAWING

SCALE: 5:1

REV: 1

HW: 21