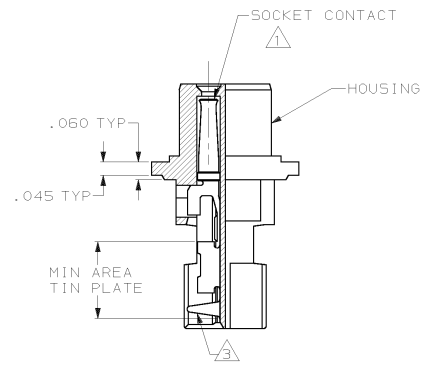
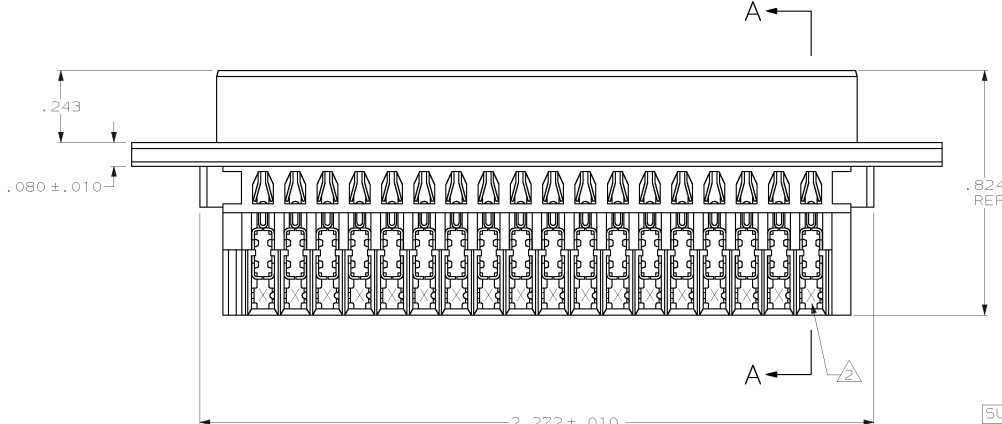
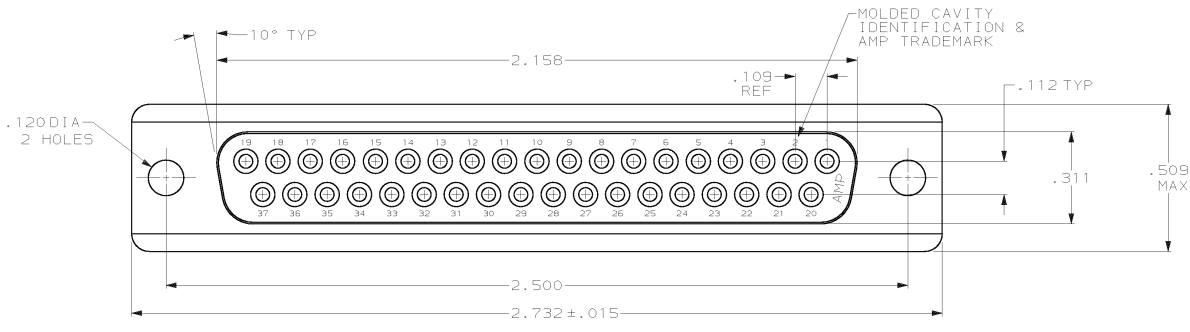


DRAWING MADE IN THIRD ANGLE PROJECTION  
 THIS DRAWING IS UNPUBLISHED. RELEASED FOR PUBLICATION .19  
 © COPYRIGHT 19 BY AMP INCORPORATED. ALL INTERNATIONAL RIGHTS RESERVED.

LOC	DIST	P	F	ZONE	LTR	REVISIONS		
						DESCRIPTION	DATE	APPD
GP	00				H	REV PER EC	01D-0220-00	JR



SECTION A-A

- ① HOUSING FULLY LOADED WITH CONTACTS.
- ② NUMBER ON CONTACT INDICATES WIRE RANGE.
- ③ CONTACT INSULATION RANGE: .060 MAXIMUM O.D.
- ④ CONTACTS PLATED .000030 GOLD ON MATING END FOR .100 MIN LENGTH. .000100-.000200 THICK BRIGHT TIN OR BRIGHT TIN-LEAD IN AREA SHOWN. .000050 THICK NICKEL UNDERPLATE ON ENTIRE CONTACT.
- ⑤ CONTACTS PLATED WITH GOLD FLASH ON MATING END FOR .100 MIN LENGTH. .000100-.000200 THICK BRIGHT TIN OR BRIGHT TIN-LEAD IN AREA SHOWN. .000030 THICK NICKEL UNDERPLATE ON ENTIRE CONTACT.

FINISH	AWG WIRE RANGE	PART NUMBER
⑤	#20-22	745213-6
⑤	#22-26	745213-5
⑤	#26-30	745213-4
④	#20-22	745213-3
④	#22-26	745213-2
④	#26-30	745213-1

DO NOT SCALE PRINT. UNLESS SPECIFIED DIMENSIONS IN INCHES. TOLERANCES ON: 2 PLC DEC ± .005 3 PLC DEC ± .005 ANGLES ± 2°	DR 4-2-90 J. GALLUCCI B6 CHK 6-21-90 W. LENKER APPD 6-22-90 J. WESTMAN APPD 6-22-90 J. ASSINI PRODUCT SPEC 108-40011 APPLICATION SPEC 114-40002 WEIGHT -	<p><b>AMP</b> AMP INCORPORATED Murrysburg, Pa. 17105</p> <p>RECEPTACLE ASSEMBLY, SIZE 4, 37 POSITION, AMPLIMITE™</p> <p>NAME DRAWING NO. 745213 SHEET 1 OF 1</p>
--	--	--