

NOTES:

1. SPECIFICATIONS:

ELECTRICAL:
 WITHSTANDING VOLTAGE: MINIMUM 1000 V RMS @ SEA LEVEL
 INSULATION RESISTANCE: INITIAL 5000 MEGOHMS MAXIMUM,
 1000 MEGOHMS MIN. AFTER ENVIRONMENTAL TESTING.
 CONTACT RATING: 5 AMPS
 CONTACT RESISTANCE: 2.7 MILLIOHMS MAX.

MATERIALS:
 INSULATOR: BLACK UL94V-0 RATED GLASS FILLED NYLON
 CONTACT(1030-1953-000): COPPER ALLOY
 CONTACT AREA PLATING: GOLD OVER NICKEL
 CONNECTOR SHELL: STEEL, PLATING ZINC WITH CLEAR CHROMATE.

ENVIRONMENTAL:
 OPERATING TEMPERATURE: -65°C TO +125°C

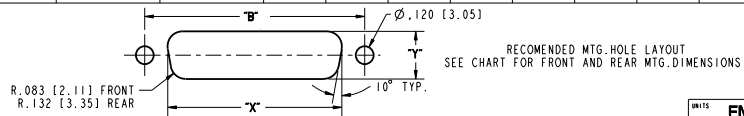
TERMINATION:
 CRIMP WILL ACCOMMODATE # 20 TO 28 AWG WIRE.

TERMINATION TOOLS:
 CRIMP TOOL: M22520/2-01
 INSERTION/EXTRACTION TOOL: CIET-20-HDB
 POSITIONER: EP-580

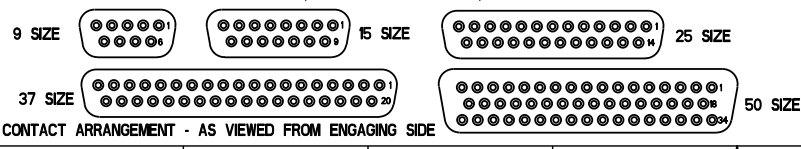
2. DIMENSIONS IN [] ARE IN MILLIMETERS.

DRAWING REVISIONS			
REV	DOCUMENT	APP	DATE
A	DO 05-1094	AKB	1/7/06
B	ECN 06E208		

NUMBER OF POSITIONS	SELECTIVE GOLD FLASH PLATING (.120" [3.05] MTG. HOLES)		CONTACTS	DIMENSION							FRONT MOUNTING HOLE DIMENSIONS		REAR MOUNTING HOLE DIMENSIONS	
	PART NO.	FACTORY NO.		"A"	"B"	"C"	"D"	"E"	"F"	"G"	"X"	"Y"	"X"	"Y"
9	DEUH-9S	702 13 09 001	INCLUDED	1.213 [30.81]	.984 [24.99]	.640 [16.26]	.308 [7.82]	.494 [12.55]	.759 [19.28]	.422 [10.72]	.874 [22.20]	.513 [13.03]	.806 [20.47]	.449 [11.40]
	DEUH-9S-FO	702 13 09 005	NOT INCLUDED											
15	DAUH-15S	702 13 15 001	INCLUDED	1.541 [39.14]	1.312 [33.32]	.968 [24.59]	.308 [7.82]	.494 [12.55]	1.083 [27.51]	.422 [10.72]	1.202 [30.53]	.513 [13.03]	1.134 [28.80]	.449 [11.40]
	DAUH-15S-FO	702 13 15 005	NOT INCLUDED											
25	DBUH-25S	702 13 25 001	INCLUDED	2.088 [53.04]	1.852 [47.04]	1.508 [38.30]	.308 [7.82]	.494 [12.55]	1.625 [41.28]	.422 [10.72]	1.743 [44.27]	.513 [13.03]	1.674 [42.52]	.449 [11.40]
	DBUH-25S-FO	702 13 25 005	NOT INCLUDED											
37	DCUH-37S	702 13 37 001	INCLUDED	2.729 [69.32]	2.500 [64.50]	2.156 [54.76]	.308 [7.82]	.494 [12.55]	2.272 [57.71]	.422 [10.72]	2.391 [60.73]	.513 [13.03]	2.326 [59.08]	.449 [11.40]
	DCUH-37S-FO	702 13 37 005	NOT INCLUDED											
50	DDUH-50S	702 13 50 001	INCLUDED	2.635 [66.93]	2.406 [61.11]	2.062 [52.37]	.420 [10.67]	.605 [15.37]	2.178 [55.32]	.534 [13.56]	2.297 [58.34]	.623 [15.82]	2.218 [56.34]	.555 [14.10]
	DDUH-50S-FO	702 13 50 005	NOT INCLUDED											



ROHS COMPLIANT



UNITS: ENGLISH		PRO/E		Cinch		MODEL BY: V. SKUZA	
DO NOT SCALE DRAWING		DRAWN BY: V. SKUZA	DATE: 06/24/05	TITLE: D*UH SERIES CRIMP & POKE CONNECTOR SKT. ASS'Y (.120" MTG HOLES)		3900 FAILEY RD LOMBARD, IL 60148	
DESIGN ENGINEER: A. BALI		06/24/05		MATERIAL:		CONTROL SPEC NUMBER	
DESIGN ENGINEERING MGR.: A. SHAH		07/09/05		MATERIAL SPEC NUMBER		FINISH	
MFG. ENGINEERING: J. OCEGUERA		07/07/05		CAD FILE NUMBER: DXUH-XXS		DRAWING NUMBER	
QUALITY ASSURANCE: A. VAZQUEZ		07/06/05		CAGE IDENT NO: 71785		SCALE: 1:1	
PROJECT NUMBER: C14740		D*UH-XXS		SHEET 1 OF 1			

THIS DOCUMENT IS THE PROPERTY OF CINCH. NEITHER THIS DOCUMENT NOR ANY OF THE INFORMATION CONTAINED IN IT MAY BE DUPLICATED OR DISCLOSED TO OTHER PERSON WITHOUT CONSENT OF CINCH.