

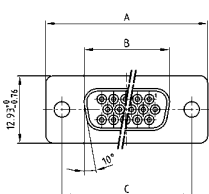
C-FILTER D-SUB HIGH DENSITY

Solder pin – Straight – Precision machined contacts



RoHS compliant – CSA listed, File No.: LR 115000-1 – UL listed, File No.: E202784

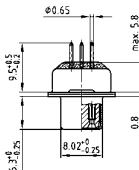
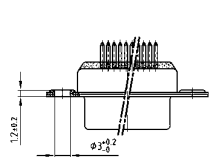
SOCKET CONNECTOR



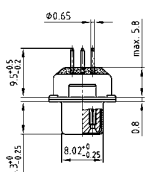
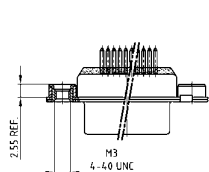
No. of pos.	A -0.76	B -0.25	C
15	31.19	16.46	25.00 ^{+0.12} / _{-0.13}
26	39.52	24.79	33.30 ^{+0.15} / _{-0.10}
44	53.42	38.50	47.04 ^{+0.13} / _{-0.13}
62	69.70	54.96	63.50 ^{+0.13} / _{-0.13}

PCB layout: Kat1iT9A

Mounting style: Through-hole



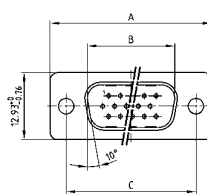
Mounting style: Threaded insert



DESCRIPTION

- Mounting styles:
 - with through-hole, Ø .118"/3 mm
 - with 4-40 UNC or M3 threaded insert
- Quality class 3 (also available in quality class 1)
- Shell: Steel tin plated (brass tin plated on request)

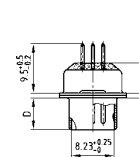
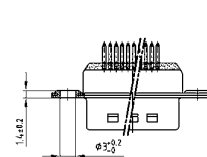
PLUG CONNECTOR



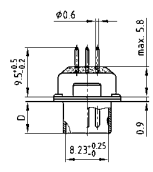
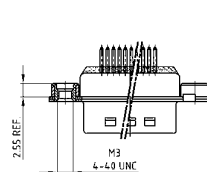
No. of pos.	A -0.76	B +0.25	C	D -0.3
15	31.19	16.79	25.00 ^{+0.12} / _{-0.13}	6.12
26	39.52	25.12	33.30 ^{+0.15} / _{-0.10}	6.12
44	53.42	38.84	47.04 ^{+0.13} / _{-0.13}	5.99
62	69.70	55.30	63.50 ^{+0.13} / _{-0.13}	5.99

PCB layout: Kat1iU0A

Mounting style: Through-hole



Mounting style: Threaded insert



ORDER DATA

Capacitance 180 pF

SOCKET CONNECTOR		
No. of pos.	Mounting style	Part Number
15	Through-hole	242 A 27380 X
26	Through-hole	242 A 27390 X
44	Through-hole	242 A 27400 X
62	Through-hole	242 A 27410 X
15	4-40 UNC Threaded insert	242 A 27420 X
26	4-40 UNC Threaded insert	242 A 27430 X
44	4-40 UNC Threaded insert	242 A 27440 X
62	4-40 UNC Threaded insert	242 A 27450 X
15	M3 Threaded insert	242 A 27460 X
26	M3 Threaded insert	242 A 27470 X
44	M3 Threaded insert	242 A 27480 X
62	M3 Threaded insert	242 A 27490 X

PLUG CONNECTOR		
No. of pos.	Mounting style	Part Number
15	Through-hole	241 A 27480 X
26	Through-hole	241 A 27490 X
44	Through-hole	241 A 27500 X
62	Through-hole	241 A 27510 X
15	4-40 UNC Threaded insert	241 A 27520 X
26	4-40 UNC Threaded insert	241 A 27530 X
44	4-40 UNC Threaded insert	241 A 27540 X
62	4-40 UNC Threaded insert	241 A 27550 X
15	M3 Threaded insert	241 A 27560 X
26	M3 Threaded insert	241 A 27570 X
44	M3 Threaded insert	241 A 27580 X
62	M3 Threaded insert	241 A 27590 X

C-FILTER D-SUB HIGH DENSITY

Solder pin – Straight – Precision machined contacts

ORDER DATA

Capacitance 370 pF

SOCKET CONNECTOR			PLUG CONNECTOR		
No. of pos.	Mounting style	Part Number	No. of pos.	Mounting style	Part Number
15	Through-hole	242 A 17980 X	15	Through-hole	241 A 16380 X
26	Through-hole	242 A 17990 X	26	Through-hole	241 A 16390 X
44	Through-hole	242 A 18000 X	44	Through-hole	241 A 16400 X
62	Through-hole	242 A 18010 X	62	Through-hole	241 A 16410 X
15	4-40 UNC Threaded insert	242 A 18060 X	15	4-40 UNC Threaded insert	241 A 16460 X
26	4-40 UNC Threaded insert	242 A 18070 X	26	4-40 UNC Threaded insert	241 A 16470 X
44	4-40 UNC Threaded insert	242 A 18080 X	44	4-40 UNC Threaded insert	241 A 16480 X
62	4-40 UNC Threaded insert	242 A 18090 X	62	4-40 UNC Threaded insert	241 A 16490 X
15	M3 Threaded insert	242 A 18140 X	15	M3 Threaded insert	241 A 16540 X
26	M3 Threaded insert	242 A 18150 X	26	M3 Threaded insert	241 A 16550 X
44	M3 Threaded insert	242 A 18160 X	44	M3 Threaded insert	241 A 16560 X
62	M3 Threaded insert	242 A 18170 X	62	M3 Threaded insert	241 A 16570 X

Capacitance 830 pF

SOCKET CONNECTOR			PLUG CONNECTOR		
No. of pos.	Mounting style	Part Number	No. of pos.	Mounting style	Part Number
15	Through-hole	242 A 18020 X	15	Through-hole	241 A 16420 X
26	Through-hole	242 A 18030 X	26	Through-hole	241 A 16430 X
44	Through-hole	242 A 18040 X	44	Through-hole	241 A 16440 X
62	Through-hole	242 A 18050 X	62	Through-hole	241 A 16450 X
15	4-40 UNC Threaded insert	242 A 18100 X	15	4-40 UNC Threaded insert	241 A 16500 X
26	4-40 UNC Threaded insert	242 A 18110 X	26	4-40 UNC Threaded insert	241 A 16510 X
44	4-40 UNC Threaded insert	242 A 18120 X	44	4-40 UNC Threaded insert	241 A 16520 X
62	4-40 UNC Threaded insert	242 A 18130 X	62	4-40 UNC Threaded insert	241 A 16530 X
15	M3 Threaded insert	242 A 18180 X	15	M3 Threaded insert	241 A 16580 X
26	M3 Threaded insert	242 A 18190 X	26	M3 Threaded insert	241 A 16590 X
44	M3 Threaded insert	242 A 18200 X	44	M3 Threaded insert	241 A 16600 X
62	M3 Threaded insert	242 A 18210 X	62	M3 Threaded insert	241 A 16610 X