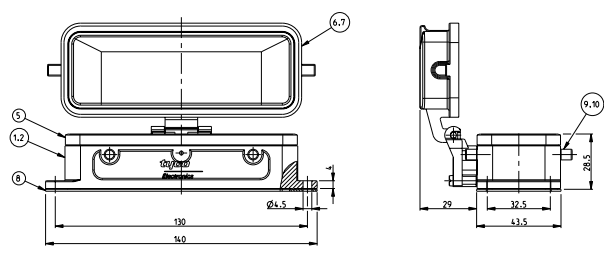
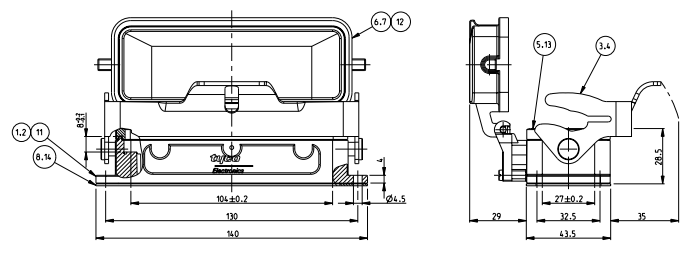


PN 1-6 & 2-6

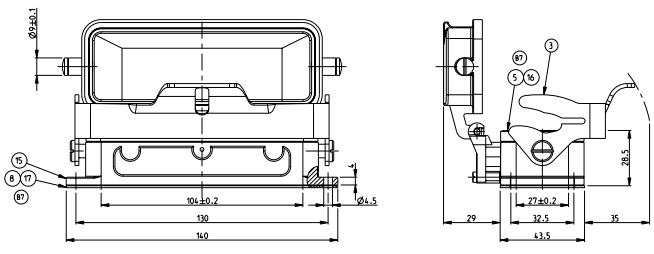


PN 1-2-2-2-0-2 & 0-3

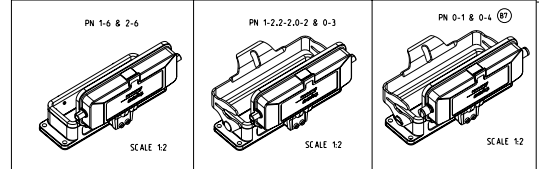


REV	DATE	DESCRIPTION	BY	CHK	APP
87		RELEASED AS PER ECR 08-03365			15
86		RELEASED AS PER ECR-07-03448			15

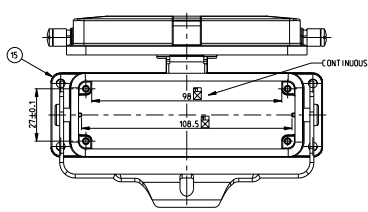
PN 0-1 & 0-4 (87)



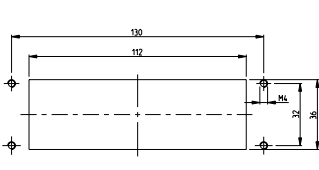
- NOTES
- ▲ MATERIAL: HOUSING-ALUMINIUM DIECASTING ALLOY
SEALS- NEOPRENE
 - ▲ SURFACE: VARNISH - ALUMINIUM OXIDE -
VARNISH BLACK
GREY
 - 3 VARNISH ON THE INSIDE NOT NECESSARY
 - ▲ WITHOUT TE LOGO
 - 5 PACKAGING QUANTITY: 5 PIECES IN A BOX



LANDING MILLED OFF



PANEL CUT-OUT



QTY	DESCRIPTION	MATERIAL	SURFACE	COLOR	TEW	REMARKS						
1	FLANGE SEAL	NITRIL		BLACK	17							
1	PROFILE SEAL			BLACK	16							
1	SURFACE MOUNTED HOUSING BOTTOM ENTRY HB	ALUMINIUM		GREY	15							
1	FLANGE SEAL	NEOPRENE		BLACK	14	CONDUCTIVE						
1	PROFILE SEAL	NEOPRENE		BLACK	13	CONDUCTIVE						
1	COVER HB	ALUMINIUM	Chromi AL PASSIVATION	BLACK	12							
1	SURFACE MOUNTED HOUSING BOTTOM ENTRY HB	ALUMINIUM	CHROMI AL PASSIVATION	BLACK	11							
1	VS-(CLIP BOX)	STAINLESS STEEL		BLANK	10							
1	VS-(CLIP BOX)	STEEL	ZINC PLATED	BLUE	9							
1	1	1	1	1	1	1	FLANGE SEAL	NEOPRENE		BLACK	8	
1	1	1	1	1	1	1	COVER HB-K	ALUMINIUM	ALUMINIUM OXIDE	BLACK	7	
1	1	1	1	1	1	1	COVER HB	ALUMINIUM	GREY	6		
1	1	1	1	1	1	1	PROFILE SEAL	NEOPRENE	BLACK	5		
1	1	1	1	1	1	1	1/8-SIDE CLIP	STAINLESS STEEL	BLANK	4		
1	1	1	1	1	1	1	1/8-SIDE CLIP	STEEL	ZINC PLATED	BLUE	3	
1	1	1	1	1	1	1	SURFACE MOUNTED HOUSING BOTTOM ENTRY HB-K	ALUMINIUM	ALUMINIUM OXIDE	BLACK	2	
1	1	1	1	1	1	1	SURFACE MOUNTED HOUSING BOTTOM ENTRY HB	ALUMINIUM	GREY	1		
0-4	0-3	0-1	0-2	2-6	1-6	2-2	1-2	ORDERING TEXT				
HB-Z4-AGD-1B-V	HB-Z4-AGD-1B	HB-Z4-AGD-1B	HB-Z4-AGD-1B	HB-Z4-AGD-1B	HB-Z4-AGD-1B	HB-Z4-AGD-1B	HB-Z4-AGD-1B					

DATE: 03.04.2000
 DRAWN: 03.04.2000
 PROJECT: 108-74001/108-74003
 SURFACE MOUNTED HOUSING BOTTOM ENTRY HB-Z4-AGD
 SCALE: 1:2
 CUSTOMER DRAWING