

4

3

2

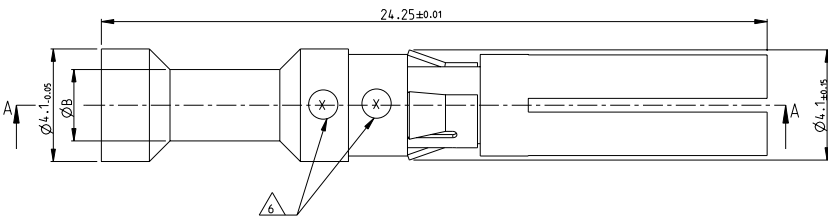
1

THIS DRAWING IS UNPUBLISHED. RELEASED FOR PUBLICATION 2006  
 BY TYCO ELECTRONICS CORPORATION. ALL RIGHTS RESERVED.  
 COPYRIGHT 2006

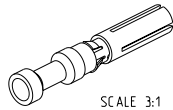
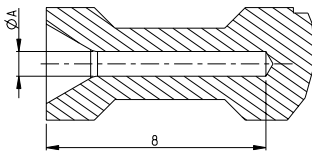
REVISONS		DATE	BY	APPD
F1	CROSS SECTION MARK. 9 CHANGED ECR-009068	24APR2009	GW	ST
F2	ECR-09-005436	19MAY2010	SR	AR
F3	ECR-10-011235	20MAY2010	SR	SR
G1	ECR-10-012150	11JAN2010	SR	ME

NOTES

- ⚠ MATERIAL SEE TABLE
- ⚠ SURFACE SEE TABLE
- ⚠ ASSEMBLY WEIGHT SEE TABLE
- ⚠ PACKAGING: 50 PIECES IN POLYBAG
- ⚠ PACKAGING: 500 PIECES IN POLYBAG & CARTON
- ⚠ CROSS-SECTION MARKING
- 7 NO VENTILATION HOLE REQUIRED AT CROSS SECTION >4.0mm<sup>2</sup>
- 8 SUITABLE PIN CONTACT: PN 1105300
- 9 SUITABLE INSERTS: SERIES HVT
- 10 SUITABLE CRIMP TOOL: PN 1-1105851-8
- 11 SUITABLE INSERTION TOOL: PN 0-1102855-6
- 12 SUITABLE EXTRACTION TOOL: PN 0-1102855-3
- 13 STANDARDS: DIN EN 61984, DIN EN 60664-1



SECTION A-A



										ASSEMBLY WEIGHT IN (kg) ⚠						
										GOLD PLATING						
										SILVER PLATING						
1	0.00142										Socket Contact 4.0 mm <sup>2</sup>	2.85	3.9	6		
1	0.00144										Socket Contact 2.5 mm <sup>2</sup>	2.2	3.2	5		
1	0.00148										Socket Contact 1.5 mm <sup>2</sup>	1.8	3.0	4		
1	0.00145										Socket Contact 0.75-1.0 mm <sup>2</sup>	1.45	2.6	3		
1	0.00149										Socket Contact 0.5 mm <sup>2</sup>	1.1	2.6	2		
1	0.00150										Socket Contact 0.13-0.4 mm <sup>2</sup>	0.9	2.6	1		
1	0.00144										Socket Contact 14 AWG	2.0	3.2	8		
1	0.00148										Socket Contact 12 AWG	2.55	3.6	9		
1	0.00133										Socket Contact 10 AWG	3.2	4.1	7		
1	0.00144										Socket Contact 4.0 mm <sup>2</sup>	2.85	3.9	6		
1	0.00148										Socket Contact 2.5 mm <sup>2</sup>	2.2	3.2	5		
1	0.00145										Socket Contact 1.5 mm <sup>2</sup>	1.8	3.0	4		
1	0.00149										Socket Contact 0.75-1.0 mm <sup>2</sup>	1.45	2.6	3		
1	0.00150										Socket Contact 0.5 mm <sup>2</sup>	1.1	2.6	2		
1	0.00144										Socket Contact 0.13-0.4 mm <sup>2</sup>	0.9	2.6	1		

DESCRIPTION	MATERIAL	SURFACE	ØA	ØB	CROSS SECTION MARKING	ITEM NO
5-2						
4-2						
3-2						
2-2						
1-2						
6-2						
8-2						
9-1						
7-2						
5-1						
4-1						
3-1						
2-1						
1-1						
6-1						

ORDERING TEXT		DIMENSIONS:		TO ORDER SPECIFICATIONS:		DRAWN BY:		DATE:		CHECKED BY:		DATE:		APPROVED BY:	
HVT-C-Bu-Au-4.0 mm <sup>2</sup>		mm		PLC		SCHURBET		01. SEP. 2007							
HVT-C-Bu-Au-2.5 mm <sup>2</sup>				PLC				01. SEP. 2007							
HVT-C-Bu-Au-1.5 mm <sup>2</sup>				PLC											
HVT-C-Bu-Au-0.75-1.0 mm <sup>2</sup>				PLC											
HVT-C-Bu-Au-0.13-0.4 mm <sup>2</sup>				PLC											
HVT-C-Bu-Ag-AWG-14				PLC											
HVT-C-Bu-Ag-AWG-12				PLC											
HVT-C-Bu-Ag-AWG-10				PLC											
HVT-C-Bu-Ag-4.0 mm <sup>2</sup>				PLC											
HVT-C-Bu-Ag-2.5 mm <sup>2</sup>				PLC											
HVT-C-Bu-Ag-1.5 mm <sup>2</sup>				PLC											
HVT-C-Bu-Ag-0.75-1.0 mm <sup>2</sup>				PLC											
HVT-C-Bu-Ag-0.13-0.4 mm <sup>2</sup>				PLC											