

4

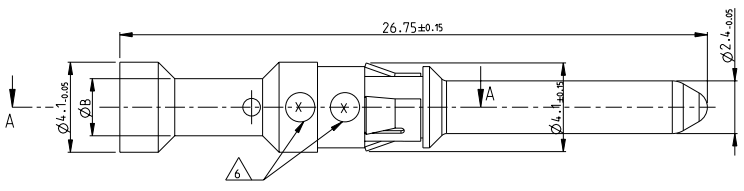
3

2

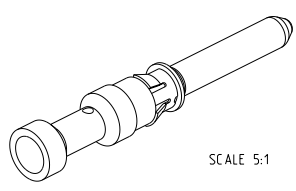
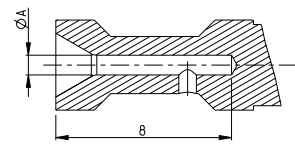
1

THIS DRAWING IS UNPUBLISHED. RELEASED FOR PUBLICATION BY TYCO ELECTRONICS CORPORATION. ALL RIGHTS RESERVED. COPYRIGHT 2006

REVISONS		DATE	BY	APPROV
P	LYA			
G2	ECR-09-005436	07MAY2010	SR	AR
H1	ECR-10-012150	11.06.10	SR	MC



SECTION A-A



SCALE 5:1

- NOTES:
- 1 MATERIAL SEE TABLE
 - 2 SURFACE SEE TABLE
 - 3 ASSEMBLY WEIGHT SEE TABLE
 - 4 PACKAGING: 50 PIECES IN POLYBAG
 - 5 PACKAGING: 500 PIECES IN POLYBAG & CARTON
 - 6 CROSS-SECTION MARKING
 - 7 NO VENTILATION HOLE REQUIRED AT CROSS SECTION >4 mm²
 - 8 SUITABLE SOCKET CONTACT: PN 1105301
 - 9 SUITABLE INSERTS: SERIES HVT
 - 10 SUITABLE CRIMP TOOL: PN 1-1105851-8
 - 11 SUITABLE INSERTION TOOL: PN 0-1102855-6
 - 12 SUITABLE EXTRACTION TOOL: PN 0-1102855-3
 - 13 STANDARDS: DIN EN 61984, DIN EN 60664-1

ASSEMBLY WEIGHT IN (Kg)		DESCRIPTION	MATERIAL	SURFACE	ØA	ØB	CROSS SECTION MARKING	ITEM NO
1	2							
0.00142		Pin Contact 4.0 mm ²						
0.00144		Pin Contact 2.5 mm ²						
0.00148		Pin Contact 1.5 mm ²						
0.00145		Pin Contact 0.75-1.0 mm ²						
0.00149		Pin Contact 0.5 mm ²						
0.00150		Pin Contact 0.13-0.4 mm ²						
0.00144		Pin Contact 14 AWG						
0.00148		Pin Contact 12 AWG						
0.00133		Pin Contact 10 AWG						
0.00142		Pin Contact 4.0 mm ²						
0.00144		Pin Contact 2.5 mm ²						
0.00145		Pin Contact 1.5 mm ²						
0.00148		Pin Contact 0.75-1.0 mm ²						
0.00149		Pin Contact 0.5 mm ²						
0.00150		Pin Contact 0.13-0.4 mm ²						

DESCRIPTION	MATERIAL	SURFACE	ØA	ØB	CROSS SECTION MARKING	ITEM NO
HVT-C-S11-Au-A-0 mm ²						
HVT-C-S11-Au-2.5 mm ²						
HVT-C-S11-Au-1.5 mm ²						
HVT-C-S11-Au-0.75-1.0 mm ²						
HVT-C-S11-Au-0.5 mm ²						
HVT-C-S11-Au-0.13-0.4 mm ²						
HVT-C-S11-Ag-AWG. 14						
HVT-C-S11-Ag-AWG. 12						
HVT-C-S11-Ag-AWG. 10						
HVT-C-S11-Ag-AWG. 10						
HVT-C-S11-Ag-AWG. 10						
HVT-C-S11-Ag-2.5 mm ²						
HVT-C-S11-Ag-1.5 mm ²						
HVT-C-S11-Ag-0.75-1.0 mm ²						
HVT-C-S11-Ag-0.5 mm ²						
HVT-C-S11-Ag-0.13-0.4 mm ²						

DIMENSIONS:		DATE: 04 SEP 2007		DRAWN: G.W. ROBLIN	
mm		APPD: T. SCHUBERT		CHECKED: T. SCHUBERT	
MATERIAL:		PART NO: 108-74035		APPLICATION SPEC: 114-74013	
		WEIGHT:		SIZE: A2	
		CUSTOMER DRAWING		SCALE: 5:1	
		SHEET: 1 OF 1		REV: H1	