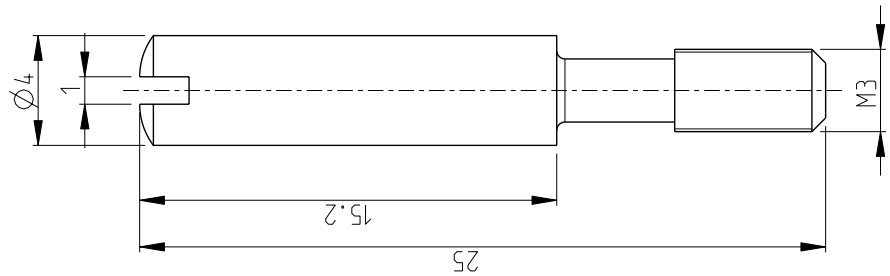


THIS DRAWING IS A CONTROLLED DOCUMENT FOR TYCO ELECTRONICS CORPORATION
IT IS SUBJECT TO CHANGE AND THE CONTROLLING ENGINEERING ORGANIZATION
SHOULD BE CONTACTED FOR THE LATEST REVISION.

LOC	DIST	P	LTR	DATE	DWN	APVD
A1	-	B1	NOTES ADDED ECR - 02280	25JAN2008	GW	ST

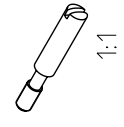
REVISONS						
LOC	DIST	P	LTR	DATE	DWN	APVD



Notes

- 1 PACKAGING: PACKED IN A BAG
QUANTITY: 50 PIECES

PN 1-1
AS SHOWN



2006

RELEASED FOR PUBLICATION

THIS DRAWING IS UNPUBLISHED.
COPYRIGHT 2006 BY TYCO ELECTRONICS CORPORATION. ALL RIGHTS RESERVED.

DIMENSIONS:		DWN	25JAN2008	MATERIAL	-	FINISH	-
TOLERANCES UNLESS OTHERWISE SPECIFIED:		G.W	ROBLEW SKI	Tyco Electronics 53819 Neunkirchen (Germany)			
0 PLC		CHK	T.SCHNURPFE IL	NAME			
1 PLC		APVD	T.SCHNURPFE IL	GUIDE PIN			
2 PLC		PRODUCT SPEC	-	F-STI-M3			
3 PLC		APPLICATION SPEC	-	SIZE	CAGE CODE	DRAWING NO	RESTRICTED TO
4 PLC		WEIGHT	-	A4	00779	G=1106102	-
ANGLES		CUSTOMER DRAWING		SCALE 5:1 SHEET 1 OF 1 REV B1			