

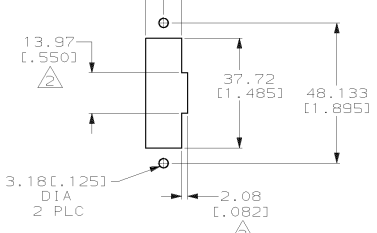
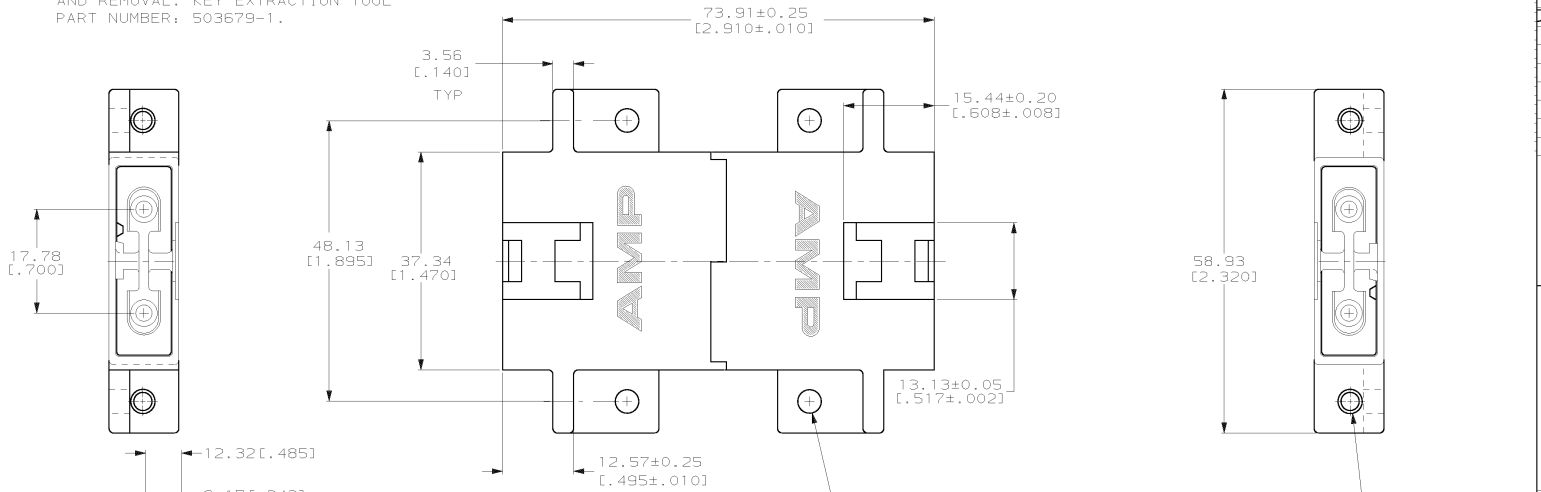
DRAWING MADE IN THIRD ANGLE PROJECTION

THIS DRAWING IS UNPUBLISHED. RELEASED FOR PUBLICATION
 © COPYRIGHT 19 BY AMP INCORPORATED. ALL INTERNATIONAL RIGHTS RESERVED.

LOC	DIST	P	F	ZONE	LTR	REVISIONS	DATE	APPD	
CE	16					C	REVISED PER 0A00-0124-00	22JAN2001	TA/5B

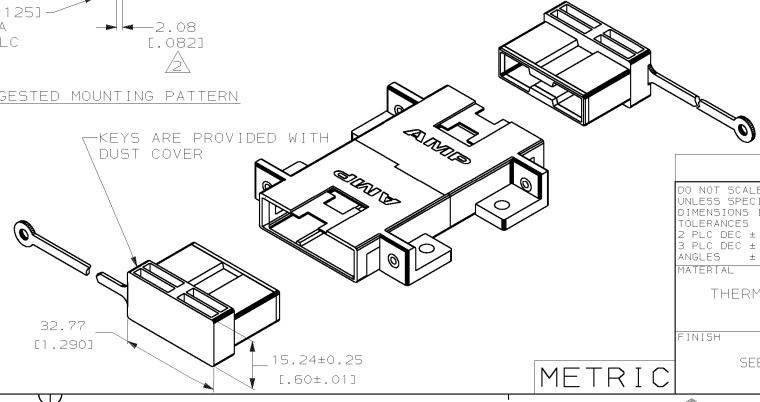
1. DIMENSIONS IN [] ARE IN INCHES.

OPTIONAL CUTOUT FOR FIELD KEY INSERTION AND REMOVAL. KEY EXTRACTION TOOL PART NUMBER: 503679-1.



SUGGESTED MOUNTING PATTERN

KEYS ARE PROVIDED WITH DUST COVER



OBSOLETE	BEIGE	CERAMIC	502807-2
	BLACK	CERAMIC	502807-1
	COLOR	ALIGNMENT SLEEVE MATERIAL	PART NUMBER

DO NOT SCALE PRINT. UNLESS SPECIFIED DIMENSIONS IN mm TOLERANCES ON : 2 PLC DEC ± 0.13(.005) 3 PLC DEC ± - ANGLES ± -	DR 10-13-92 R. HILFMAN CHK 10-14-92 T. FAWCETT APPD 10-14-92 T. FAWCETT	AMP INCORPORATED Harrisburg, Pa. 17105	
MATERIAL THERMOPLASTIC	PRODUCT SPEC -	NAME FSD TO FSD COUPLING ASSEMBLY, FIELD KEYABLE, AMP FSD, SINGLEMODE	
FINISH SEE TABLE	APPLICATION SPEC -	SIZE C	FSCM NO 00779
WEIGHT -		SCALE 2:1	DRAWING NO 502807
			SHEET 1 OF 1