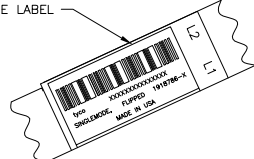
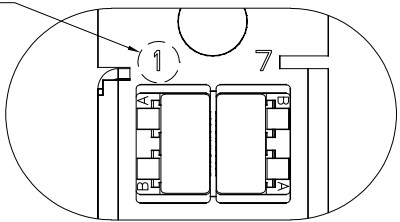
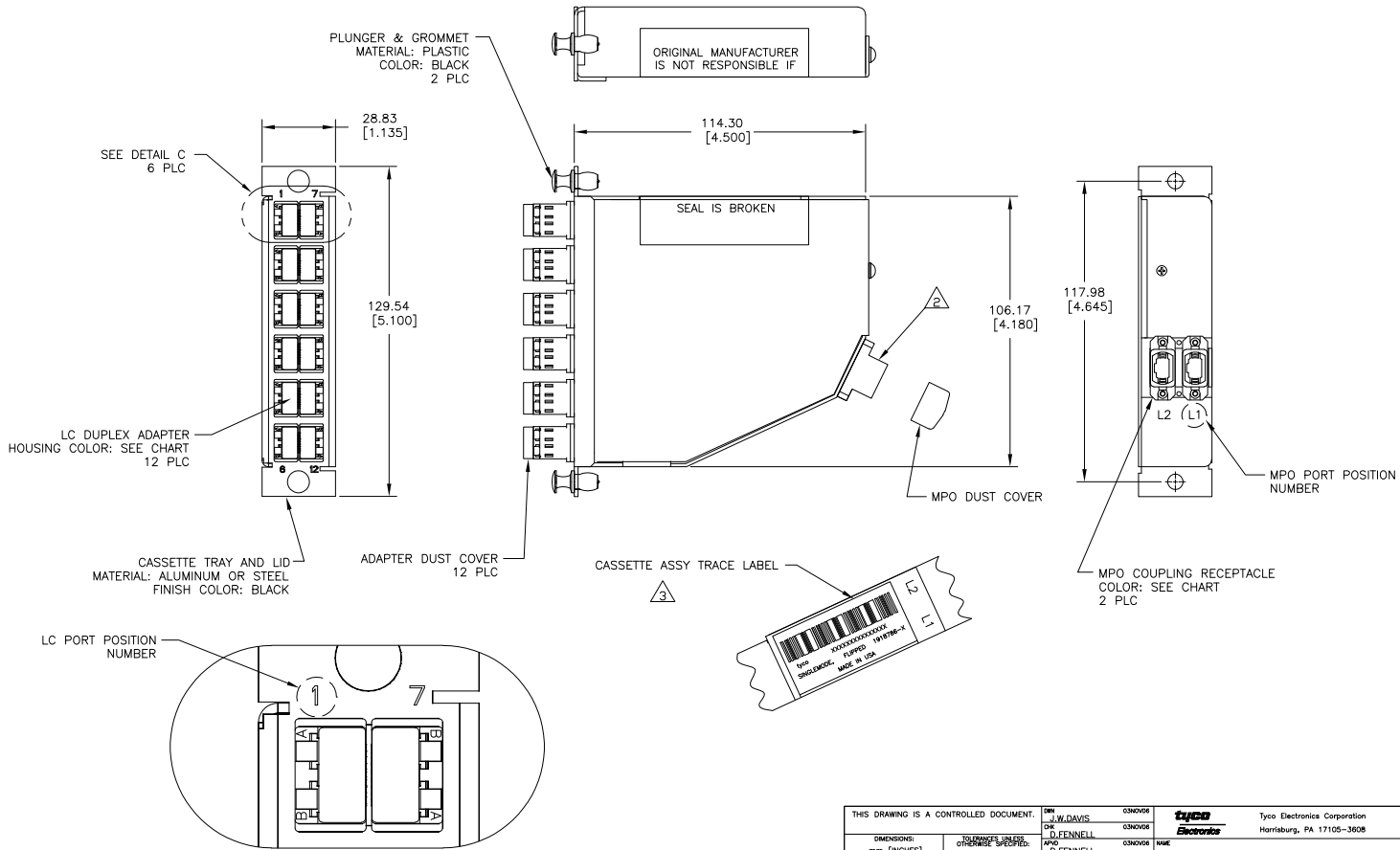


THIS DRAWING IS UNPUBLISHED.
 RELEASED FOR PUBLICATION
 BY TYCO ELECTRONICS CORPORATION. ALL RIGHTS RESERVED.

LOC	DATE	REVISIONS					
CE	16	P	L/R	DESCRIPTION	DATE	BY	APP'D
		A		RELEASED	07FEB07	JWD	DLF



THIS DRAWING IS A CONTROLLED DOCUMENT.		DRN	J.W.DAVIS	CSN0306	tyco	Tyco Electronics Corporation
		DR	D.FENNEL	CSN0306	Electronics	Harrisburg, PA 17105-3608
DIMENSIONS:		APD			CASSIETTE ASSEMBLY; 24 FIBER, SINGLEMODE	
mm [INCHES]		PRODUCT SPEC			MPO - LC PAIRS FLIPPED	
TOLERANCES UNLESS OTHERWISE SPECIFIED:		APPLICATION SPEC			RESTRICTED TO	
0 PLC	±	WEIGHT			SIZE	CAGE CODE
1 PLC	±				A2	00779
2 PLC	±				DRAWING NO	1918786
3 PLC	±					
4 PLC	±					
ANGLES	±					
FINISH						
MATERIAL		CUSTOMER DRAWING		SCALE	NTS	SHEET 1 of 2
						REV A

AMP 1471-9 REV 31MAR2000

1918786

A

4

3

2

1

THIS DRAWING IS UNPUBLISHED. RELEASED FOR PUBLICATION
 © COPYRIGHT BY TYCO ELECTRONICS CORPORATION. ALL RIGHTS RESERVED.

LOC	DIST	REVISIONS			
F	LTR	DESCRIPTION	DATE	BY	APPD
CE	16				
		SEE SHEET 1			

- MAXIMUM CASSETTE ASSEMBLY LOSS: 1.25dB.
- WHITE MARKING ON MPO TO BE FACING TOWARD TOP OF CONNECTOR MODULE. WHITE MARK INDICATES FIBER 1 SIDE
- SEE TRACE LABEL DETAIL
- A COPY OF CASSETTE ASSEMBLY LOSS TEST DATA WILL BE PLACED INSIDE OR WITH THE UNIT PACKAGE. CASSETTES WILL BE TESTED AT 1310nm & 1550nm WAVELENGTHS.
- PRODUCT AND PROCESSING MUST MEET REQUIREMENTS OF TYCO ELECTRONICS STANDARD 230-702



FIBER PATH - PAIRS FLIPPED

MPO L1 PORT POSITION NO	MPO L2 PORT POSITION NO	LC PORT POSITION NO
1	-	1A
2	-	1B
3	-	2A
4	-	2B
5	-	3A
6	-	3B
7	-	4A
8	-	4B
9	-	5A
10	-	5B
11	-	6A
12	-	6B
-	1	7A
-	2	7B
-	3	8A
-	4	8B
-	5	9A
-	6	9B
-	7	10A
-	8	10B
-	9	11A
-	10	11B
-	11	12A
-	12	12B

BLACK STANDARD	AQUA SECURE	1-1918786-1
BLACK STANDARD	SLATE SECURE	1-1918786-0
BLACK STANDARD	ROSE SECURE	1918786-9
BLACK STANDARD	VIOLET SECURE	1918786-8
BLACK STANDARD	BROWN SECURE	1918786-7
BLACK STANDARD	ORANGE SECURE	1918786-6
BLACK STANDARD	YELLOW SECURE	1918786-5
BLACK STANDARD	BLUE SECURE	1918786-4
BLACK STANDARD	GREEN SECURE	1918786-3
BLACK STANDARD	RED SECURE	1918786-2
BLACK STANDARD	BLUE STANDARD	1918786-1
MPO COUPLING BUSHING COLOR & TYPE	LC ADAPTER COLOR & TYPE	PART NUMBER

THIS DRAWING IS A CONTROLLED DOCUMENT.

DIMENSIONS: mm [INCHES] MATERIAL: - FINISH: -	TOLERANCES UNLESS OTHERWISE SPECIFIED: 0 PLG ± .005 1 PLG ± .005 2 PLG ± .005 3 PLG ± .005 4 PLG ± .005 ANGLES ± .5°	DWG NO: J.W. DAVIS CHK: D. FENNEL APPR: D. FENNEL PRODUCT SPEC: - APPLICATION SPEC: - WEIGHT: - CUSTOMER DRAWING	DESIGNED BY: J.W. DAVIS DATE: 03/09/08 DRAWN BY: D. FENNEL DATE: 03/09/08 NAME: - SIZE: A2 CASE CODE: 00779 DRAWING NO: C=1918786 RESTRICTED TO: - SCALE: NTS SHEET: 2 of 2 REV: A	tyco Electronics Tyco Electronics Corporation Harrisburg, PA 17105-3608 CASSETTE ASSEMBLY, 24 FIBER, SINGLEMODE MPO - LC PAIRS FLIPPED
---	--	--	---	---