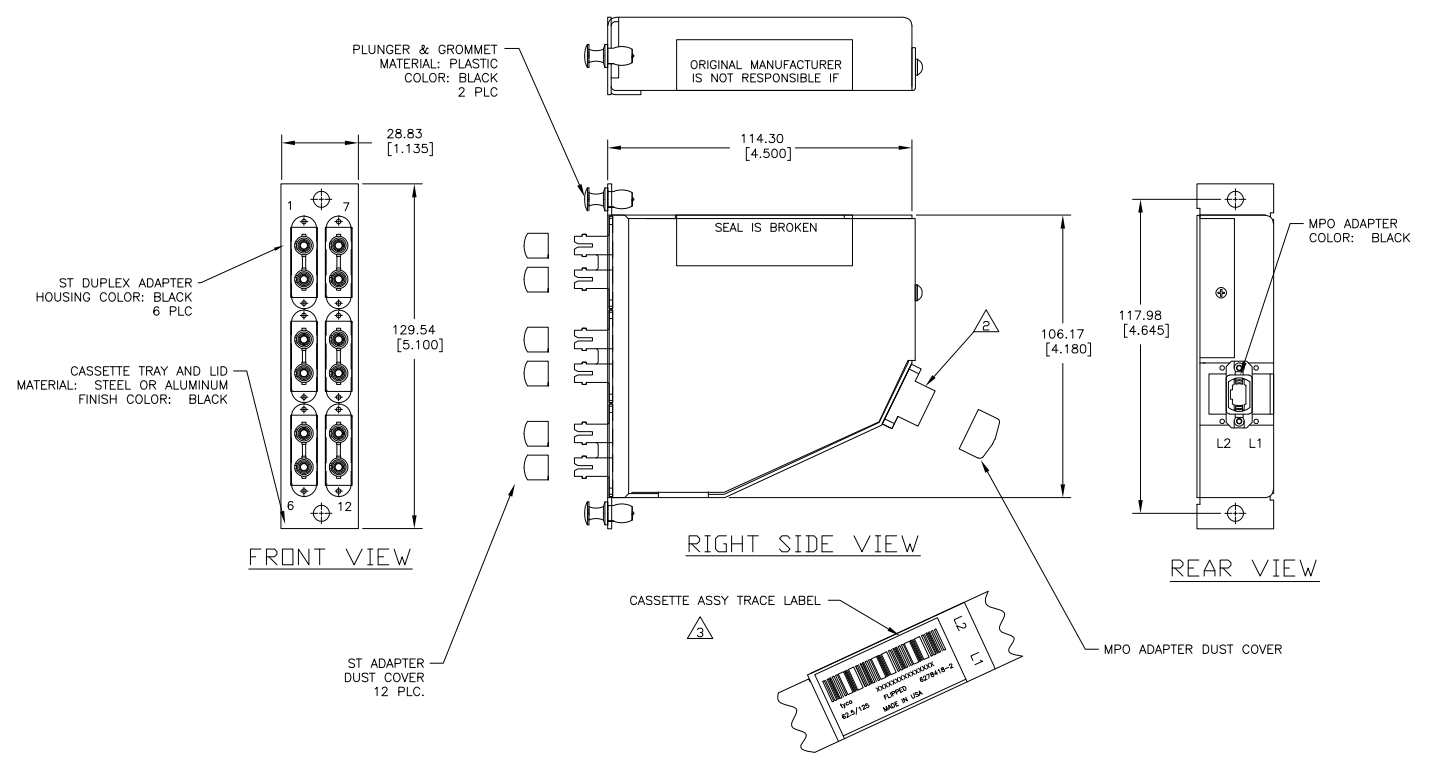


THIS DRAWING IS UNPUBLISHED. RELEASED FOR PUBLICATION BY TYCO ELECTRONICS CORPORATION. ALL RIGHTS RESERVED.

LOC	DEPT	REVISIONS					
CE	16	P	L/R	DESCRIPTION	DATE	BY	APPD
		A		RELEASED	15MAR07	JWD	DLF



AMP 1471-9 REV 31MAR2000

THIS DRAWING IS A CONTROLLED DOCUMENT.		DRN	J.W.DAVIS	CSN0306	tyco	Tyco Electronics Corporation
DIMENSIONS: mm [INCHES]		CHK	D.FENNEL	CSN0306	Electronics	Harrisburg, PA 17105-3608
TOLERANCES UNLESS OTHERWISE SPECIFIED:		APPC		CSN0306	NAME	CASSETTE ASSEMBLY, 12 FIBER, 62.5/125µm, MPO - ST DUPLEX
0 PLG	± .-	PRODUCT SPEC			SIZE	A2
1 PLG	± .-	APPLICATION SPEC			CAGE CODE	00779
2 PLG	± .-				DRAWING NO	6278418
3 PLG	± .-				RESTRICTED TO	
4 PLG	± .-					
ANGLES	± .-	WEIGHT				
FINISH						
MATERIAL		CUSTOMER DRAWING			SCALE	NTS
					SHEET	1 of 2
					REV	A

4

3

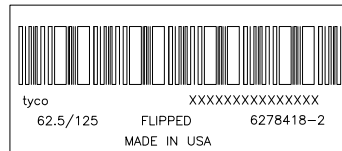
2

1

THIS DRAWING IS UNPUBLISHED. RELEASED FOR PUBLICATION
 © COPYRIGHT BY TYCO ELECTRONICS CORPORATION. ALL RIGHTS RESERVED.

LOC	DIST	REVISIONS			
F	LTR	DESCRIPTION	DATE	BY	APPD
CE	16	SEE SHEET 1			

1. MAXIMUM CASSETTE ASSEMBLY LOSS: 1.25dB.
2. WHITE MARKING ON MPO TO BE FACING TOWARD TOP OF CONNECTOR MODULE. WHITE MARK INDICATES FIBER 1 SIDE.
3. SEE TRACE LABEL DETAIL.
4. A COPY OF CASSETTE ASSEMBLY LOSS TEST DATA WILL BE PLACED INSIDE OR WITH THE UNIT PACKAGE. CASSETTES WILL BE TESTED AT 1300nm WAVE LENGTH.
5. PRODUCT AND PROCESSING MUST MEET REQUIREMENTS OF TYCO ELECTRONICS STANDARD 230-702.
6. ST DUPLEX ADAPTER KEY SLOTS WILL BE FACING TO THE LEFT (FROM FRONT VIEW) FOR PART NUMBER 6278418-1.
7. ST DUPLEX ADAPTER KEY SLOTS WILL BE FACING TO THE RIGHT (FROM FRONT VIEW) FOR PART NUMBER 6278418-2.



FIBER PATH

MPO PORT POSITION NO	ST PORT POSITION NO
1	1
2	2
3	3
4	4
5	5
6	6
7	7
8	8
9	9
10	10
11	11
12	12

FLIPPED	6278418-2
STRAIGHT	6278418-1
DESCRIPTION	PART NUMBER

THIS DRAWING IS A CONTROLLED DOCUMENT.		DWG J.W.DAVIS CHK D.FENNEL APPR D.FENNEL PRODUCT SPEC APPLICATION SPEC WEIGHT CUSTOMER DRAWING	Tyco Electronics Corporation Harrisburg, PA 17105-3608 CASSETTE ASSEMBLY, 12 FIBER, 62.5/125um, MPO - ST DUPLEX SIZE A2 CAGE CODE 00779 DRAWING NO C=6278418 RESTRICTED TO
DIMENSIONS: mm [INCHES] 0 P.L.C. ± 1 P.L.C. ± 2 P.L.C. ± 3 P.L.C. ± 4 P.L.C. ± ANGLES ± FINISH	TOLERANCES UNLESS OTHERWISE SPECIFIED: 0 P.L.C. ± 1 P.L.C. ± 2 P.L.C. ± 3 P.L.C. ± 4 P.L.C. ± ANGLES ± FINISH	SCALE NTS SHEET 2 of 2 REV A	

6278418

A