

4

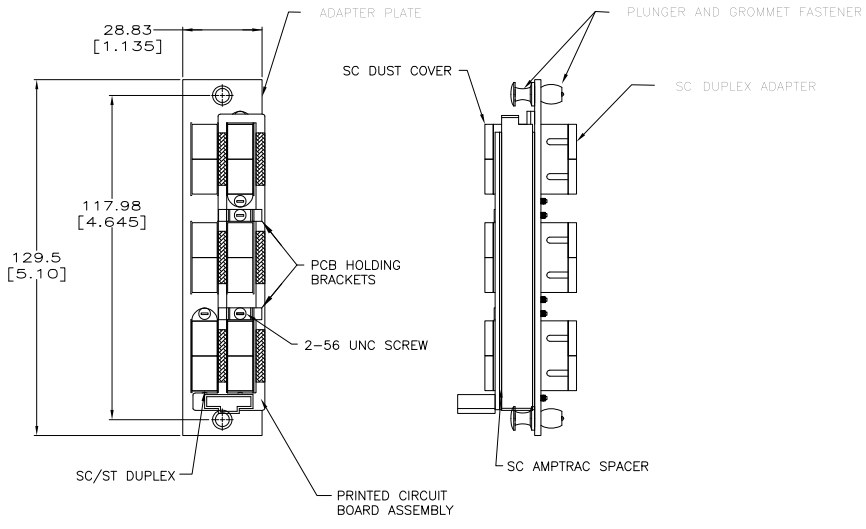
3

2

1

THIS DRAWING IS UNPUBLISHED. RELEASED FOR PUBLICATION  
 BY TYCO ELECTRONICS CORPORATION. ALL RIGHTS RESERVED.

LOC	DIST	REVISIONS					
HM	00	F	LR	DESCRIPTION	DATE	DM	APD
		O		PER NPR 01-6266	26FEB2003	WS	JH
		A		REV-EC-0B60-0106-04	08DEC04	LH	MD



△ MATERIAL:  
 ADAPTER PLATE - ALUMINUM  
 SC/ST DUPLEX - THERMOPLASTIC  
 DUST COVER, SC - VINYL  
 PLUNGER & GROMMET - PLASTIC  
 2-56 UNC SCREW - CARBON STEEL  
 PRINTED CIRCUIT BOARD - LAMINATED PLASTIC FL-4  
 SC AMPTRAC SPACER - THERMOPLASTIC  
 PCB HOLDING BRACKET - STAINLESS STEEL  
 PCB CONNECTOR - FLAME RETARDENT THERMOPLASTIC  
 CONTACTS - BRASS

SM APC	GREEN	6 SC RECPT W/ CERAMIC SLEEVE	1435657-3
SINGLEMODE	BLUE	6 SC RECPT W/ CERAMIC SLEEVE	1435657-2
MULTIMODE	BEIGE	6 SC RECPT W/ PH BRZ SLEEVE	1435657-1
TYPE	COLOR	COUPLING BUSHING	PART NO.

THIS DRAWING IS A CONTROLLED DOCUMENT.		DM: W. SOURBREER 26FEB2003	Tyco Electronics Corporation Harrisburg, PA 17105-3608	
DIMENSIONS: MM		CHK: J. HOFFER 26FEB2003	APC: B. BAREY 26FEB2003	
TOLERANCES UNLESS OTHERWISE SPECIFIED:		NAME: ADAPTER PLATE ASSY, SNAP-IN COMPATIBLE, SC DUPLEX, AMPTrac, 12 FIBER		
0 PL. ± .01	1 PL. ± .02	PRODUCT SPEC: -	APPLICATION SPEC: -	RESTRICTED TO: -
2 PL. ± .04 (0.1)	3 PL. ± .08 (0.15)	SIZE: A2	CAGE CODE: 00779	DRAWING NO: 1435657
4 PL. ± .15	ANGLES ± .5°	WEIGHT: -	CUSTOMER DRAWING	
MATERIAL: -	FINISH: -	SCALE: 1:1	SHEET: 1 OF 1	REV: A

AMP 1471-9 REV 31MM2000

1435657