

4

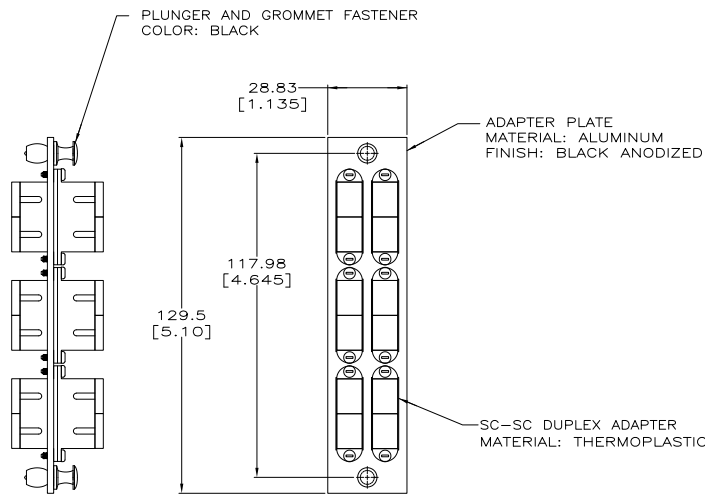
3

2

1

THIS DRAWING IS UNPUBLISHED. RELEASED FOR PUBLICATION. ALL RIGHTS RESERVED.

LOC	DIST	REVISIONS			
F	LNK	DESCRIPTION	DATE	BY	APPD
HM	00				
	E2	REVISED PER ECO-11-005033	22MAR11	RK	HMR



CERAMIC(MM)	AQUA	6 SC RECPT W/ CERAMIC SLEEVE	559596-7
MULTIMODE	AQUA	6 SC RECPT W/ PH BRZ SLEEVE	559596-6
MULTIMODE	BLACK	6 SC RECPT W/ PH BRZ SLEEVE	559596-5
CERAMIC(MM)	BEIGE	6 SC RECPT W/ CERAMIC SLEEVE	559596-4
SM APC	GREEN	6 SC RECPT W/ CERAMIC SLEEVE	559596-3
SINGLEMODE	BLUE	6 SC RECPT W/ CERAMIC SLEEVE	559596-2
MULTIMODE	BEIGE	6 SC RECPT W/ PH BRZ SLEEVE	559596-1
TYPE	COLOR	COUPLING BUSHING	PART NO.

DIMENSIONS:		TOLERANCES UNLESS OTHERWISE SPECIFIED:		DRAWN		TE Connectivity	
mm	[INCHES]	0 PLZ	#	U. HALL	29DEC2005	TE Connectivity	
		1 PLZ	#	S. HERNDON	30DEC2005	ADAPTER PLATE ASSY, SNAP-IN COMPATIBLE, SC-SC DUPLEX, 6 PACK	
		2 PLZ	#	S. HERNDON	30DEC2005	SC-SC DUPLEX, 12 PORT	
		3 PLZ	#	APRO	30DEC2005	SIZE	A2
		4 PLZ	#	PRODUCT SPEC		ONE CODE	00779
		ANGLES	#	APPLICATION SPEC		DRAWING NO	C=559596
		FINISH	#	WEIGHT		RESTRICTED TO	
MATERIAL				CUSTOMER DRAWING		SCALE	1:1
						SHEET	1 of 1
						REV	E2

1471-9 (3/11)

559596

A