

4

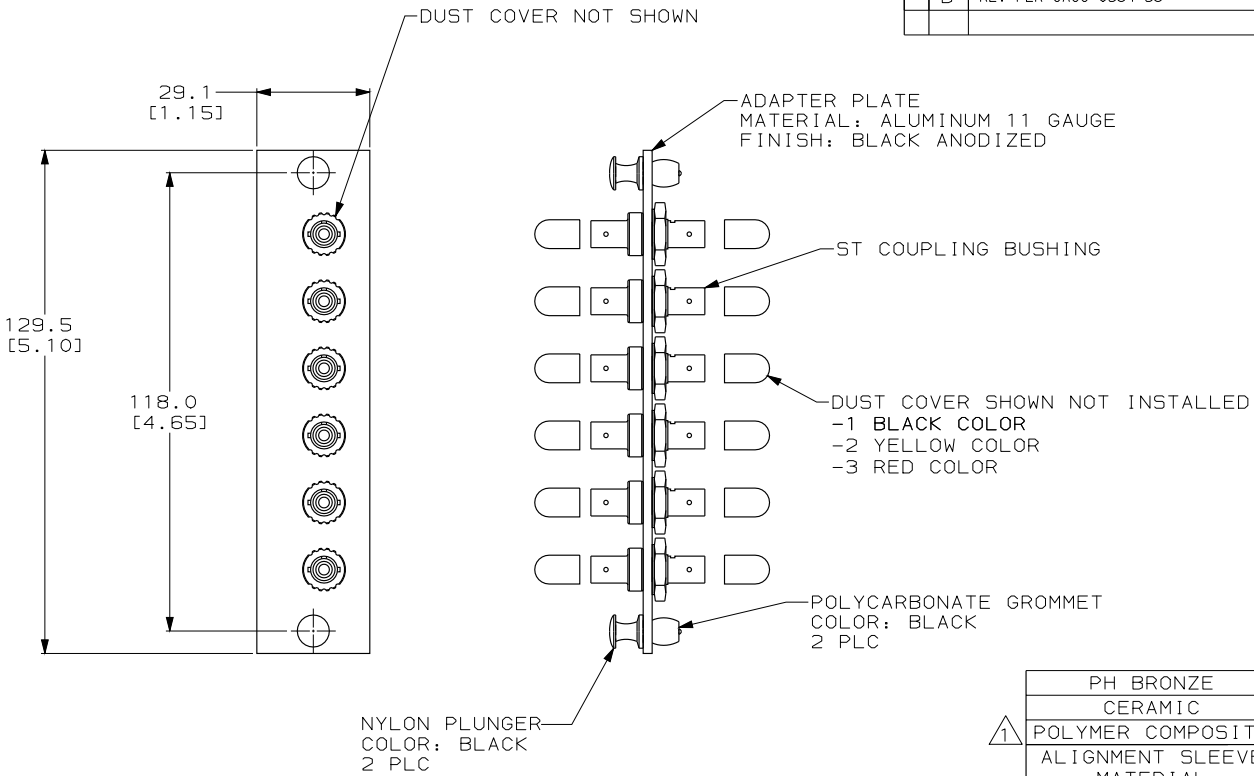
3

2

1

THIS DRAWING IS UNPUBLISHED. RELEASED FOR PUBLICATION
 © COPYRIGHT 19 BY AMP INCORPORATED. ALL RIGHTS RESERVED.

| LOC | DIST | REVISIONS | | | |
|-----|------|-------------|----------------------|---------|-------|
| P | LTR | DESCRIPTION | DATE | DWN | APVD |
| CE | 16 | B | REV PER 0A00-0564-98 | 07OCT98 | JM JD |



| | |
|---------------------------|----------|
| PH BRONZE | 559515-3 |
| CERAMIC | 559515-2 |
| POLYMER COMPOSITE | 559515-1 |
| ALIGNMENT SLEEVE MATERIAL | PART NO. |

BULK PACKAGED 100 PIECES PER PACK

| DIMENSIONS: | | TOLERANCES UNLESS OTHERWISE SPECIFIED: | | DWN | | AMP | | AMP Incorporated | |
|-------------|------|--|----|------------|---------|------|--|--|-----------|
| mm | [in] | | | CHK | NAME | DATE | | Harrisburg, PA 17105-3608 | |
| | | 0 PLC | ±- | J C HOFFER | 11-8-96 | | | ADAPTER PLATE ASSEMBLY, SNAP-IN, ST 6-PACK | |
| | | 1 PLC | ±- | M FASNACHT | 11-8-96 | | | | |
| | | 2 PLC | ±- | | | | | | |
| | | 3 PLC | ±- | | | | | | |
| | | 4 PLC | ±- | | | | | SIZE | CAGE CODE |
| | | ANGLES | ±- | | | | | A3 | 00779 |
| | | | ±- | | | | | DRAWING NO | ©-559515 |
| MATERIAL | | FINISH | | | | | | WEIGHT | |
| | | | | | | | | CUSTOMER DRAWING | |
| | | | | | | | | SCALE | 1:1 |
| | | | | | | | | SHEET | 1 OF 1 |
| | | | | | | | | REV | B |