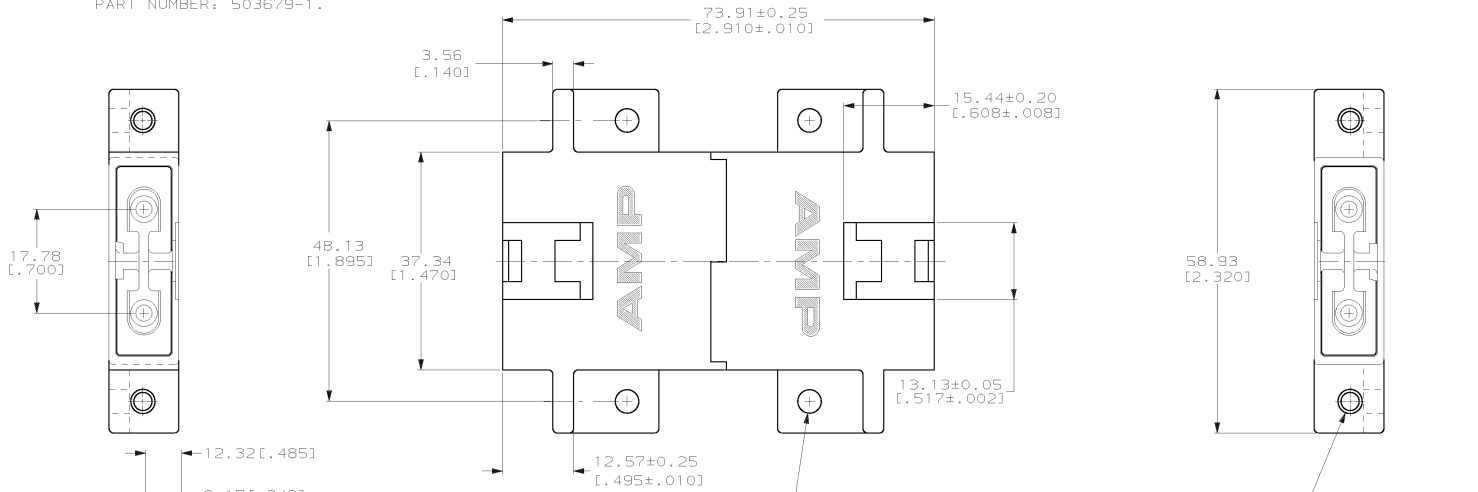


DRAWING MADE IN THIRD ANGLE PROJECTION
 THIS DRAWING IS UNPUBLISHED. RELEASED FOR PUBLICATION
 © COPYRIGHT 19 BY AMP INCORPORATED. ALL INTERNATIONAL RIGHTS RESERVED.

LOC	DIST	P	F	ZONE	LTR	REVISIONS	DATE	APPD
CE	16				C	REVISED PER 0A00-0124-00	22JAN2001	TA/5B

1. DIMENSIONS IN [] ARE IN INCHES.
 OPTIONAL CUTOUT FOR FIELD KEY INSERTION AND REMOVAL. KEY EXTRACTION TOOL PART NUMBER: 503679-1.

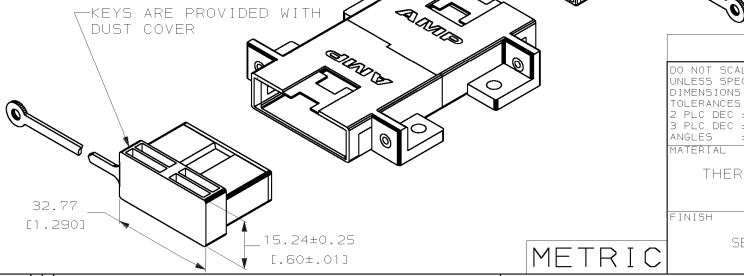


4.37±0.05 [0.172±.002]
 4 PLC

#4-40 THREADED INSERT
 4 PLC

SUGGESTED MOUNTING PATTERN

OBSOLETE	BEIGE	CERAMIC	502806-4
OBSOLETE	BLACK	CERAMIC	502806-3
OBSOLETE	BEIGE	METAL	502806-2
OBSOLETE	BLACK	METAL	502806-1
	COLOR	ALIGNMENT SLEEVE MATERIAL	PART NUMBER



DO NOT SCALE PRINT. UNLESS SPECIFIED DIMENSIONS IN mm TOLERANCES ON : 2 PLC DEC ± 0.13(.005) 3 PLC DEC ± - ANGLES ± -	DR 10-12-92 R.HILEMAN CHK 10-14-92 T.FAWCETT APPD 10-14-92 T.FAWCETT	AMP INCORPORATED Harrisburg, Pa. 17105	
MATERIAL THERMOPLASTIC	PRODUCT SPEC -	NAME FSD TO FSD COUPLING ASSEMBLY, FIELD KEYABLE, MULTIMODE, AMP FSD	
FINISH SEE TABLE	APPLICATION SPEC -	SIZE C	FSCM NO 00779
WEIGHT -		DRAWING NO 502806	SHEET 1 OF 1

METRIC

CUSTOMER DRAWING