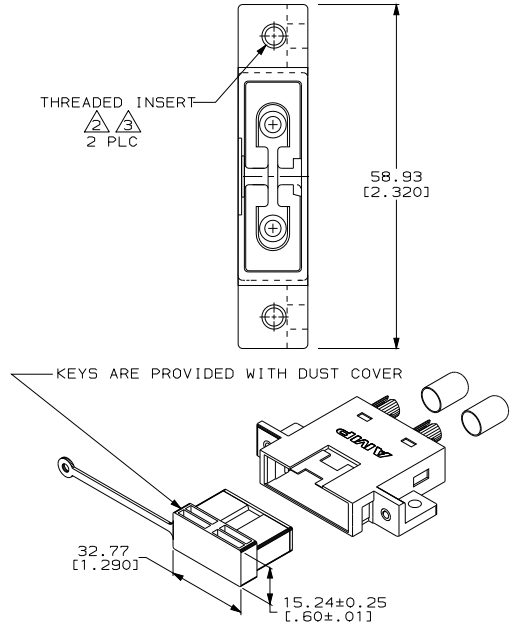
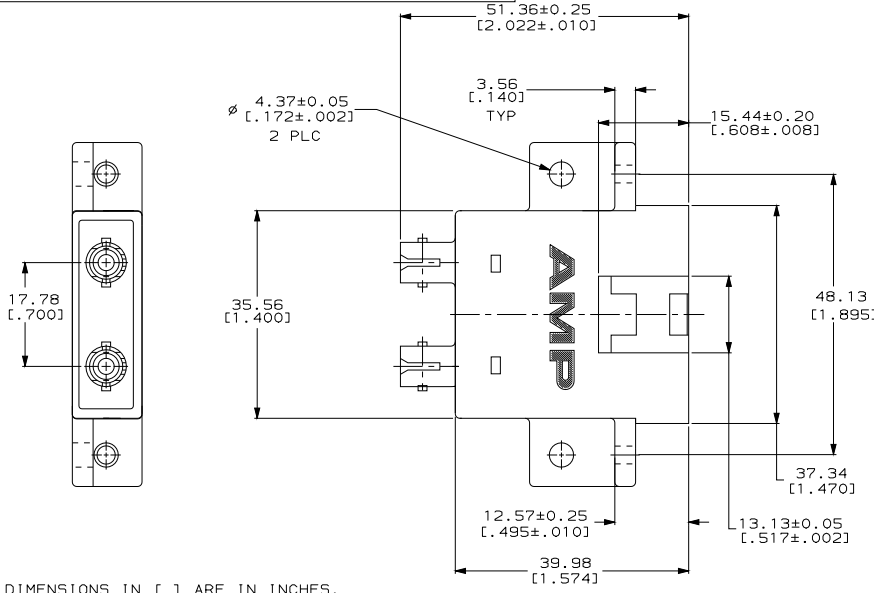
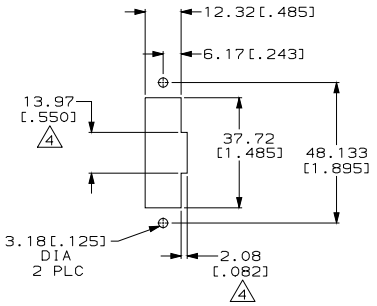


DRAWING MADE IN THIRD ANGLE PROJECTION
 THIS DRAWING IS UNPUBLISHED. RELEASED FOR PUBLICATION
 © COPYRIGHT 19 BY AMP INCORPORATED. ALL INTERNATIONAL RIGHTS RESERVED.

LOC	DIST	P	F	ZONE	LTR	REVISIONS	DATE	APPD
CE	00				D	ECR-05-011147	13OCT05	KG/DK



1. DIMENSIONS IN [] ARE IN INCHES.
 2 #4-40 THREADED INSERT.
 3 M3X0.5 THREADED INSERT.
 4 OPTIONAL CUTOUT FOR FIELD KEY INSERTION AND REMOVAL. KEY EXTRACTION TOOL PART NUMBER: 503679-1.



	COLOR	ALIGNMENT SLEEVE MATERIAL	PART NUMBER
4 OBSOLETE	BEIGE	CERAMIC	502808-6
4 OBSOLETE	BEIGE	METAL	502808-5
4	BEIGE	CERAMIC	502808-4
4 OBSOLETE	BLACK	CERAMIC	502808-3
4	BEIGE	METAL	502808-2
4 OBSOLETE	BLACK	METAL	502808-1

DO NOT SCALE PRINT. UNLESS SPECIFIED DIMENSIONS IN mm TOLERANCES ON :		DR 10-9-92 R.HILEMAN		PART NO	
2 PLC DEC ±	0.13 (.005)	CHK 10-14-92 T.FAWCETT	AMP INCORPORATED Harrisburg, Pa. 17105		
3 PLC DEC ±	0.13 (.005)	APPD 10-14-92 T.FAWCETT	NAME		
ANGLES	± -	APPD 10-14-92 D.FISHER	FSD TO 2.5mm BAYONET COUPLING ASSEMBLY, FIELD KEYABLE, AMP FSD, MULTIMODE		
MATERIAL	THERMOPLASTIC	PRODUCT SPEC	SIZE	FSCM NO	DRAWING NO
FINISH	SEE TABLE	APPLICATION SPEC	C	00779	502808
WEIGHT	-		SCALE	2:1	SHEET 1 OF 1