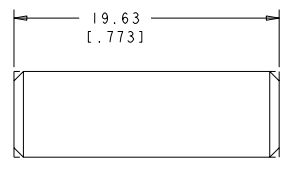
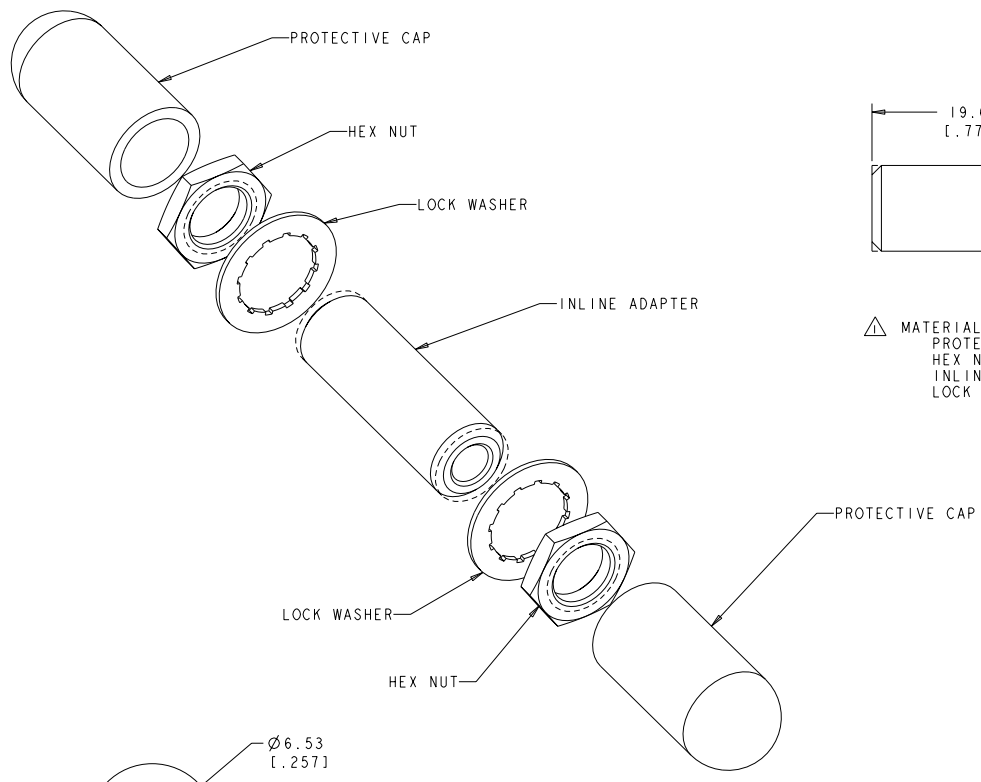
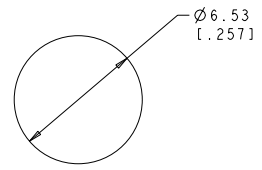


THIS DRAWING IS UNPUBLISHED. RELEASED FOR PUBLICATION
 © COPYRIGHT 20 BY TYCO ELECTRONICS CORPORATION. ALL RIGHTS RESERVED.

LOC		DIST		REVISIONS			
P	LTN	DESCRIPTION	DATE	BY	APPD		
E		REVISE PER ECR-05-009613	29SEP2005	BB	LS		



△ MATERIAL:
 PROTECTIVE CAP: VINYL
 HEX NUT: NICKEL PLATED BRASS
 INLINE ADAPTER: STAINLESS STEEL
 LOCK WASHER: STAINLESS STEEL



RECOMMENDED PANEL CUTOUT
 7.07 [.278] MAX. PANEL THICKNESS
 NTS

504028-1
 PART NUMBER

DIMENSIONS: INCHES 0 PLC 1 PLC 2 PLC 3 PLC 4 PLC ANGLE FINISH		TOLERANCE UNLESS OTHERWISE SPECIFIED: .015 .015 .015 .015 .015 .015 .015		DWG: D. BRIGGS 29SEP2005 CHK: L. SAUERBORN 29SEP2005 APPD: S. BUCHTER 29SEP2005		Tyco Electronics Harrisburg, PA 17105-3600	
MATERIAL: △				NAME: ASSEMBLY, FSMA SPLICE BUSHING		SIZE: A2 CASE CODE: 00779 DRAWING NO: 504028	
CUSTOMER DRAWING				WEIGHT: -		RESTRICTED TO: -	
SCALE: 5:1						SHEET 1 OF 1	