

4

3

2

1

THIS DRAWING IS UNPUBLISHED. RELEASED FOR PUBLICATION
 © COPYRIGHT - BY TYCO ELECTRONICS CORPORATION. ALL RIGHTS RESERVED.

LOC	DIST	REVISIONS					
EA	51	P	LTR	DESCRIPTION	DATE	DWN	APVD
		A		SEE SHEET 2	06JUN06	LGE	RP

NOTE:

- CONNECTOR KEYING CONFORMS TO ANSI X3T9.5/84-48.
- LED IS 'ON' WHEN IN INSERTED STATE
- THIS PRODUCT HAS NOT COMPLETED VALIDATION TESTING.

SPECIFICATIONS:

SWITCH LEGEND

PI = PRIMARY IN PTX = PRIMARY TRANSMIT
 SO = SECONDARY OUT STX = SECONDARY TRANSMIT
 PO = PRIMARY OUT PRX = PRIMARY RECEIVE
 SI = SECONDARY IN SRX = SECONDARY RECEIVE

FIBER TYPE	62.5/125/250
------------	--------------

INSERTION LOSS

INSERTION LOSS DATA INCLUDES TWO CONNECTED PAIRS TESTED PER FOTP-34 METHOD A2

OPERATE MODE, POWER ON

PI LINE TO PRX STATION 1.8 DB MAX
 SI LINE TO SRX STATION 1.8 DB MAX
 PTX STATION TO PO LINE 1.8 DB MAX
 STX STATION TO SO LINE 1.8 DB MAX

BYPASS MODE, POWER OFF

PI LINE TO PO LINE 1.8 DB MAX
 SI LINE TO SO LINE 1.8 DB MAX
 PTX STATION TO PRX STATION 5.0 DB MAX
 STX STATION TO SRX STATION 5.0 DB MAX

OPTICAL CROSSTALK </= -45 DB, PER FOTP-42

OPERATING WAVE LENGTH 750 TO 1450nm

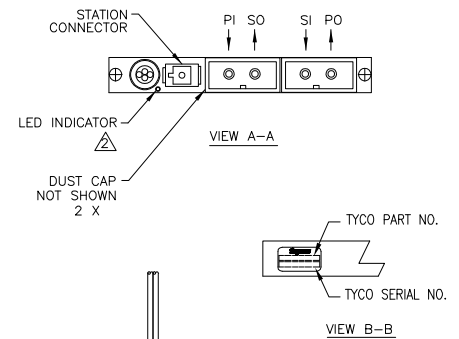
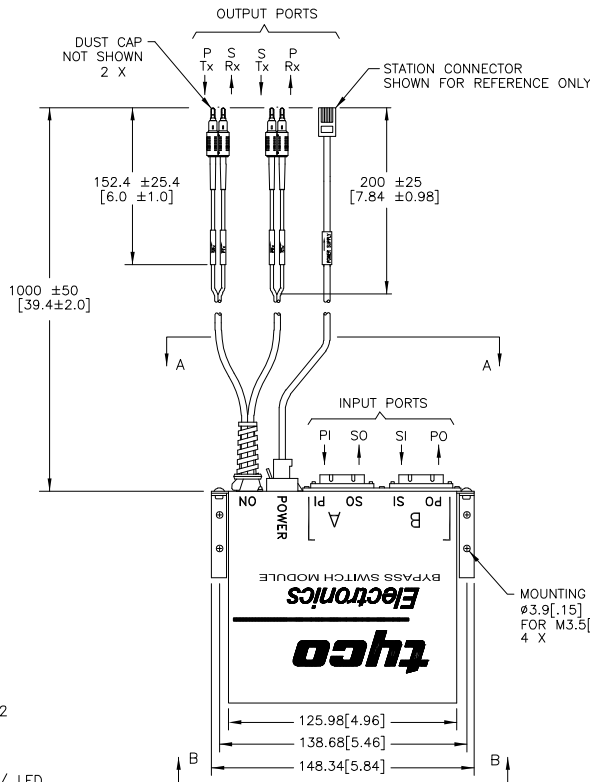
TESTED WAVELENGTH 1300nm

POWER REQUIREMENTS 4.0 TO 5.5 VDC

190 MA MAX AT 5.0 VDC W/ LED

SWITCHING SPEED 10 MILLISECONDS MAX

KIT P/N	MODULE P/N	POWER CORD P/N	STATION CONNECTOR TYPE
5209187-3	5209668-3	5209503-1	6 POS. SHIELDED MOD PLUG
5209187-4	5209668-3	5209504-1	6 POS. SHIELDED MINI DIN
5209187-6	5209668-3	5209506-1	4 POS. MOD PLUG



THIS DRAWING IS A CONTROLLED DOCUMENT.		DWN S. MONGOLD 15FEB06		Tyco Electronics Corporation Harrisburg, PA 17105-3608	
DIMENSIONS: mm [INCHES]		CHK R. PAUL 15FEB06		NAME	BYPASS SWITCH KIT D-SC/D-SC
TOLERANCES UNLESS OTHERWISE SPECIFIED:		APVD F. ABENDSCHEIN 15FEB06	SIZE	CAGE CODE	DRAWING NO
0 PLC ± -		PRODUCT SPEC	A3	00779	5209187
1 PLC ± 0.5 [0.020]		APPLICATION SPEC	RESTRICTED TO	-	
2 PLC ± 0.38 [0.015]		WEIGHT	CUSTOMER DRAWING		
3 PLC ± -		SCALE 1:1 SHEET 1 OF 2 REV A			
4 PLC ± -					
ANGLES ± -					
MATERIAL FINISH					

4

3

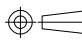
2

1

THIS DRAWING IS UNPUBLISHED. RELEASED FOR PUBLICATION
 © COPYRIGHT - BY TYCO ELECTRONICS CORPORATION. ALL RIGHTS RESERVED.

LOC	DIST	REVISIONS					
		P	LTR	DESCRIPTION	DATE	DWN	APVD
EA	51	-	-	SEE REVISION CHART	-	-	-

DATE	REVISION	CHANGES	REASON	APPROVAL
15FEB06	1	PRINT CREATED	-	RP
02MAR06	2	UPDATED PER BYPASS SWITCH KIT EXAMPLE PRINT	-	RP
06JUN06	A	CHANGE STATUS TO ACTIVE	-	RP

THIS DRAWING IS A CONTROLLED DOCUMENT.		DWN S. MONGOLD 15FEB06	Tyco Electronics Corporation Harrisburg, PA 17105-3608	
DIMENSIONS: mm [INCHES]		CHK R. PAUL 15FEB06	APVD E. ABENDSCHEIN 15FEB06	
		NAME BYPASS SWITCH KIT D-SC/D-SC		RESTRICTED TO
TOLERANCES UNLESS OTHERWISE SPECIFIED: 0 PLC ± - 1 PLC ± 0.5 [.020] 2 PLC ± 0.38 [.015] 3 PLC ± - 4 PLC ± - ANGLES ± -		PRODUCT SPEC -	APPLICATION SPEC -	WEIGHT -
MATERIAL -	FINISH -	SIZE A3	CAGE CODE 00779	DRAWING NO C=5209187
CUSTOMER DRAWING			SCALE 1:1	SHEET 2 of 2
			REV A	