

4

3

2

1

THIS DRAWING IS UNPUBLISHED. RELEASED FOR PUBLICATION
 © COPYRIGHT - BY TYCO ELECTRONICS CORPORATION. ALL RIGHTS RESERVED.

LOC	DIST	REVISIONS					
EA	51	P	LTR	DESCRIPTION	DATE	DWN	APVD
		A1	SEE SHEET 2				

NOTE :

- 1. CONNECTOR KEYING CONFORMS TO ANSI X3T9.5/84-48.
- △ LED IS 'ON' WHEN IN INSERTED STATE.
- 3. THIS PRODUCT HAS NOT COMPLETED VALIDATION TESTING.
- △ OBSOLETE PARTS: OBSOLETE CIS STREAMLINING PER D.RENAUD/D.SINISI

SPECIFICATIONS :

SWITCH LEGEND

PI = PRIMARY IN PTx = PRIMARY TRANSMIT
 SO = SECONDARY OUT STx = SECONDARY TRANSMIT
 PO = PRIMARY OUT PRx = PRIMARY RECEIVE
 SI = SECONDARY IN SRx = SECONDARY RECEIVE

PART No.	FIBER TYPE	"A" LENGTH	PIGTAIL STRAIN RELIEF/CONNECTOR
5209174-3	62.5/125/250	1000mm	STRAIGHT ST
5209174-4	62.5/125/250	1000mm	STRAIGHT ST
5209174-6	62.5/125/250	1000mm	STRAIGHT ST
△ 3-5209174-4	62.5/125/250	3000mm	STRAIGHT ST

INSERTION LOSS

INSERTION LOSS DATA INCLUDES TWO CONNECTED PAIRS TESTED PER FOTP-34 METHOD A2

OPERATE MODE, POWER ON

PI LINE TO PRX STATION	1.8 DB MAX
SI LINE TO SRX STATION	1.8 DB MAX
PTX STATION TO PO LINE	1.8 DB MAX
STX STATION TO SO LINE	1.8 DB MAX

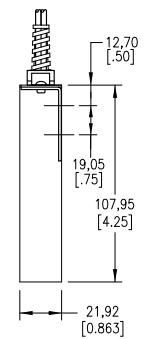
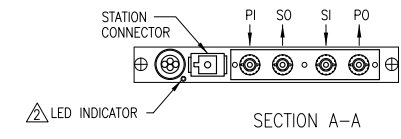
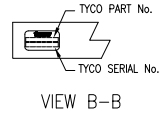
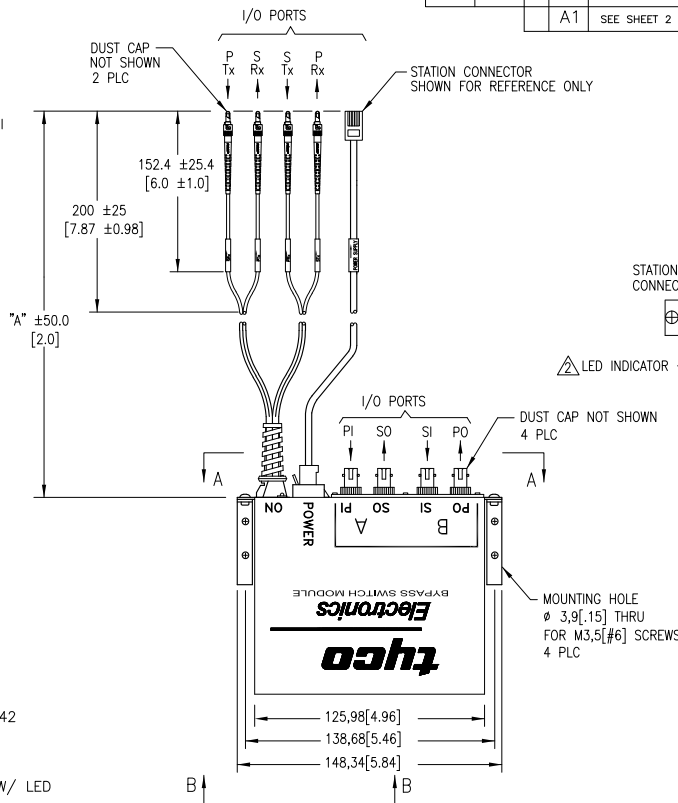
BYPASS MODE, POWER OFF

PI LINE TO PO LINE	1.8 DB MAX
SI LINE TO SO LINE	1.8 DB MAX
PTX STATION TO PRX STATION	5.0 DB MAX
STX STATION TO SRX STATION	5.0 DB MAX

OPTICAL CROSSTALK </= -45 DB, PER FOTP-42
 OPERATING WAVE LENGTH 750 TO 1450nm
 TESTED WAVELENGTH 1300nm
 POWER REQUIREMENTS 4.0 TO 5.5 VDC
 190 MA MAX AT 5.0 VDC W/ LED

SWITCHING SPEED

10 MILLISECONDS MAX



KIT P/N	MODULE P/N	POWER CORD P/N	STATION CONNECTOR TYPE
5209174-3	5209664-3	5209503-1	6 POS. SHIELDED MOD PLUG
5209174-4	5209664-3	5209504-1	6 POS. SHIELDED MINI DIN
5209174-6	5209664-3	5209506-1	4 POS. MOD PLUG
△ OBSOLETE 3-5209174-4	5209664-6	5209504-6	6 POS. SHIELDED MINI DIN

THIS DRAWING IS A CONTROLLED DOCUMENT.

DIMENSIONS: mm [INCHES]	TOLERANCES UNLESS OTHERWISE SPECIFIED:	DWN S. MONGOLD 01FEB06	Tyco Electronics Corporation Harrisburg, PA 17105-3608
0 PLC ±	1 PLC ±0.5 [0.020]	CHK R. PAUL 01FEB06	
2 PLC ±0.38 [0.015]	3 PLC ±	APVD E. ABENDSCHEIN 01FEB06	NAME
4 PLC ±	ANGLES ±2°	PRODUCT SPEC	BYPASS SWITCH KIT, ST, ADAPTOR/ST PIGTAILS
MATERIAL	FINISH	APPLICATION SPEC	SIZE CAGE CODE DRAWING NO RESTRICTED TO
		WEIGHT	A3 00779 C 5209174
CUSTOMER DRAWING			SCALE 1:1 SHEET 1 OF 2 REV A1

4

3

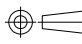
2

1

THIS DRAWING IS UNPUBLISHED. RELEASED FOR PUBLICATION
 © COPYRIGHT - BY TYCO ELECTRONICS CORPORATION. ALL RIGHTS RESERVED.

LOC	DIST	REVISIONS					
EA	51	P	LTR	DESCRIPTION	DATE	DWN	APVD
		-		SEE REVISION CHART	-	-	-

DATE	REVISION	CHANGES	REASON	APPROVAL
01FEB06	1	PRINT CREATED	-	RP
01MAR06	2	UPDATED PER BYPASS SWITCH KIT EXAMPLE PRINT	-	RP
05JUN06	A	CHANGE STATUS TO ACTIVE	-	RP
09NOV09	A1	REVISED PER ECO-09-024927	-	AEG

THIS DRAWING IS A CONTROLLED DOCUMENT.		DWN	S. MONGOLD	01FEB06	Tyco Electronics Corporation	
DIMENSIONS: mm [INCHES]		CHK	R. PAUL	01FEB06	Harrisburg, PA 17105-3608	
		APVD	F. ABENDSCHEIN	01FEB06	NAME	
TOLERANCES UNLESS OTHERWISE SPECIFIED: 0 PLC ± - 1 PLC ± 0.5 [.020] 2 PLC ± 0.38 [.015] 3 PLC ± - 4 PLC ± - ANGLES ± 2°		PRODUCT SPEC		BYPASS SWITCH KIT, ST, ADAPTOR/ST PIGTAILS		
MATERIAL		APPLICATION SPEC		SIZE	CAGE CODE	DRAWING NO
FINISH		WEIGHT		A3	00779	5209174
CUSTOMER DRAWING				RESTRICTED TO	SCALE	SHEET
				-	1:1	2 of 2
						REV A1

AMP 1470-19 REV 31MAR2000