

4

3

2

1

THIS DRAWING IS UNPUBLISHED. RELEASED FOR PUBLICATION  
 COPYRIGHT - BY TYCO ELECTRONICS CORPORATION. ALL RIGHTS RESERVED.

LOC	DIST	REVISIONS			
P	LTR	DESCRIPTION	DATE	DWN	APVD
EA	51				
	A1	SEE SHEET 2			

## NOTE:

- CONNECTOR KEYING CONFORMS TO ANSI X3T9.5/64-48.
- LED IS 'ON' WHEN IN INSERTED STATE.
- THIS PRODUCT HAS NOT COMPLETED VALIDATION TESTING.
- OBSOLETE PARTS: OBSOLETE CIS STREAMLINING PER D.RENAUD/D.SINISI

## SPECIFICATIONS:

## SWITCH LEGEND

PI = PRIMARY IN      PTx = PRIMARY TRANSMIT  
 SO = SECONDARY OUT    STx = SECONDARY TRANSMIT  
 PO = PRIMARY OUT    PRx = PRIMARY RECEIVE  
 SI = SECONDARY IN    SRx = SECONDARY RECEIVE

FIBER TYPE
62.5/125/250

## INSERTION LOSS

INSERTION LOSS DATA INCLUDES TWO CONNECTED PAIRS  
 TESTED PER FOTP-34 METHOD A2

## OPERATE MODE, POWER ON

PI LINE TO PRX STATION    2.3 DB MAX  
 SI LINE TO SRX STATION    2.3 DB MAX  
 PTX STATION TO PO LINE    2.3 DB MAX  
 STX STATION TO SO LINE    2.3 DB MAX

## BYPASS MODE, POWER OFF

PI LINE TO PO LINE        2.8 DB MAX  
 SI LINE TO SO LINE        2.8 DB MAX  
 PTX STATION TO PRX STATION    5.0 DB MAX  
 STX STATION TO SRX STATION    5.0 DB MAX

OPTICAL CROSSTALK        < / = -45 DB, PER FOTP-42

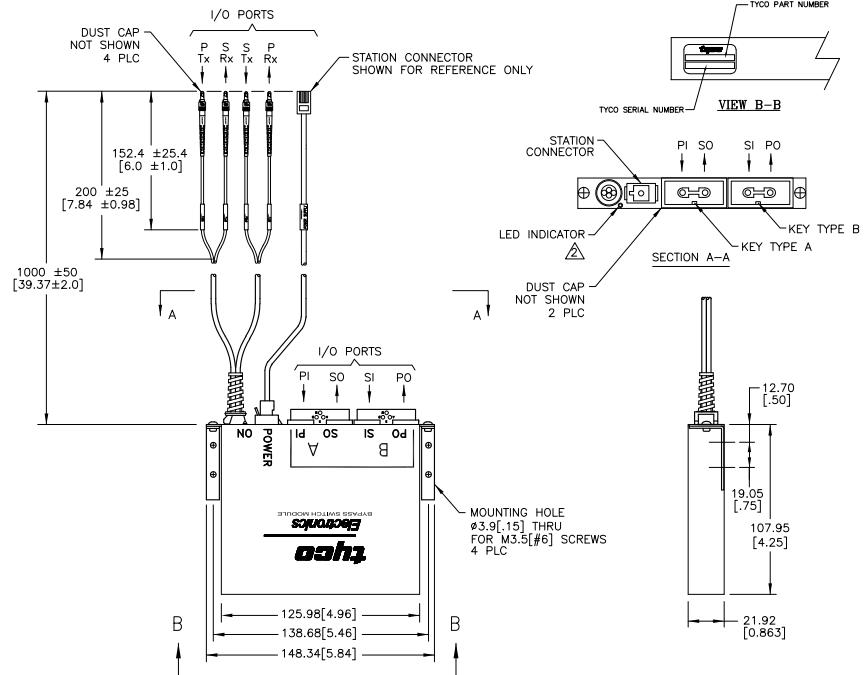
OPERATING WAVE LENGTH    750 TO 1450nm

TESTED WAVELENGTH        1300nm

POWER REQUIREMENTS      4.0 TO 5.5 VDC

190 MA MAX AT 5.0 VDC W/ LED

SWITCHING SPEED            10 MILLISECONDS MAX



	KIT P/N	MODULE P/N	POWER CORD P/N	STATION CONNECTOR TYPE
△ OBSOLETE	5209162-3	5209661-3	5209503-1	6 POS. SHIELDED MOD PLUG
	5209162-4	5209661-3	5209504-1	6 POS. SHIELDED MINI DIN
△ OBSOLETE	5209162-6	5209661-3	5209506-1	4 POS. MOD PLUG

THIS DRAWING IS A CONTROLLED DOCUMENT.

## DIMENSIONS:

mm [INCHES]



## TOLERANCES UNLESS OTHERWISE SPECIFIED:

0 PLC ± -  
 1 PLC ± 0.5[.02]  
 2 PLC ± 0.38[.015]  
 3 PLC ± -  
 4 PLC ± -  
 ANGLES ± 2°

## MATERIAL

## FINISH

DWN S. MONGOLD 12JAN06

CHK R. PAUL 12JAN06

APVD F. ABENDSCHEIN 12JAN06

NAME

PRODUCT SPEC

APPLICATION SPEC

WEIGHT

CUSTOMER DRAWING

Tyco Electronics Corporation  
 Harrisburg, PA 17105-3608

NAME

BYPASS SWITCH KIT

FSD MIC ADAPTOR/ST PIGTAIL

RESTRICTED TO

SIZE CAGE CODE DRAWING NO

A3 00779 C-5209162

SCALE 1:1 SHEET 1 OF 2 REV A1

4

3

2

1

THIS DRAWING IS UNPUBLISHED. RELEASED FOR PUBLICATION  
 © COPYRIGHT - BY TYCO ELECTRONICS CORPORATION. ALL RIGHTS RESERVED.

LOC	DIST	REVISIONS					
		P	LTR	DESCRIPTION	DATE	DWN	APVD
EA	51	-	-	SEE REVISION CHART	-	-	-

DATE	REVISION	CHANGES	REASON	APPROVAL
12JAN06	1	PRINT CREATED	-	RP
28FEB06	2	UPDATED PER BYPASS SWITCH KIT EXAMPLE PRINT	-	RP
02JUN06	A	CHANGE TO ACTIVE STATUS	-	RP
09NOV09	A1	REVISED PER ECO-09-024927	-	AEG

THIS DRAWING IS A CONTROLLED DOCUMENT.		DWN S. MONGOLD 12JAN06	Tyco Electronics Corporation Harrisburg, PA 17105-3608	
DIMENSIONS: mm [INCHES]		CHK R. PAUL 12JAN06	Tyco Electronics	
TOLERANCES UNLESS OTHERWISE SPECIFIED:		APVD E. ABENDSCHEIN 12JAN06	NAME -	
0 PLC ± - 1 PLC ± - 2 PLC ± - 3 PLC ± - 4 PLC ± - ANGLES ± 2'		PRODUCT SPEC -	BYPASS SWITCH KIT FSD MIC ADAPTOR/ST PIGTAIL	
MATERIAL -	FINISH -	APPLICATION SPEC -	SIZE A3	RESTRICTED TO -
		WEIGHT -	CAGE CODE 00779	DRAWING NO 5209162
CUSTOMER DRAWING			SCALE 1:1	SHEET 2 of 2
			REV A1	

AMP 1470-19 REV 31MAR2000