

4

3

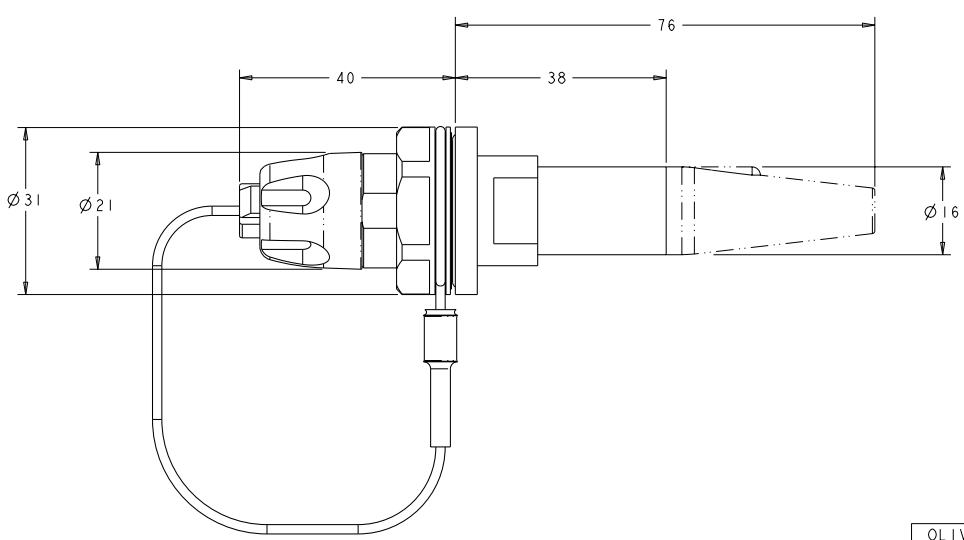
2

1

THIS DRAWING IS UNPUBLISHED. RELEASED FOR PUBLICATION BY TYCO ELECTRONICS CORPORATION. ALL RIGHTS RESERVED. COPYRIGHT 20

REV	DATE	BY	CHKD	APPROV
1	13JAN06	KG	DW	
2	01FEB06	KG	DW	
A	03OC72008	KG	DW	
B	28JAN2009	KG	DW	

1. ASSEMBLY SHOWN FOR REFERENCE ONLY. SHIPPED LOOSE PIECE AS SHOWN ON PAGE 2.
2. ALL ASSEMBLY DIMENSION ARE FOR REFERENCE ONLY.
3. COMPLETE THE CONNECTOR ASSEMBLY BY ADDING EACH OF THE FOLLOWING PRO BEAM MINI KITS:
 - A. EXPANDED BEAM INSERT ASSEMBLY KIT
 - B. FERRULE KIT, ONE PER FIBER
 - C. CABLE ADAPTER KIT, SIZED TO THE CABLE JACKET DIAMETER.
- △ PANEL SHOULD BE BETWEEN 1mm AND 6mm THICKNESS.
5. THIS PRODUCT HAS NOT COMPLETED VALIDATION TESTING.



SHOWN WITH CABLE ADAPTER KIT INSTALLED AS PHANTOM LINES FOR VISUAL AND DIMENSIONAL REFERENCE

OLIVE DRAB ZINC	ALUMINUM	1918185-3
NONE	NICKEL ALUMINUM BRONZE	1918185-2
HARD ANODIZE	ALUMINUM	1918185-1
HOUSING PLATING	HOUSING ALLOY	PART NUMBER

DIMENSIONS: mm 	TO DRAWING SPECIFICATIONS 0 PLC ± 1 PLC ± 2 PLC ± 3 PLC ± 4 PLC ± ANGLES ± FINISH ±	DWG: R. GLATELTY 04 JAN 2006 CHK: D. WERTMAN 13 JAN 2006 APPR: D. WERTMAN 13 JAN 2006 NAME: D. WERTMAN PRODUCT SPEC: APPLICATION SPEC: WEIGHT: MATERIAL: - FINISH: - SEE TABLE	Tyco Electronics Harrisburg, PA 17105-3608 CONNECTOR SHELL KIT, SEALED D-HOLE BULKHEAD, PRO BEAM MINI SIZE: A2 CASE CODE: 00779 DRAWING NO: 1918185 RESTRICTED TO: - SCALE: 2:1 SHEET: 1 OF 2 REV: B
-----------------------	--	---	--

4

3

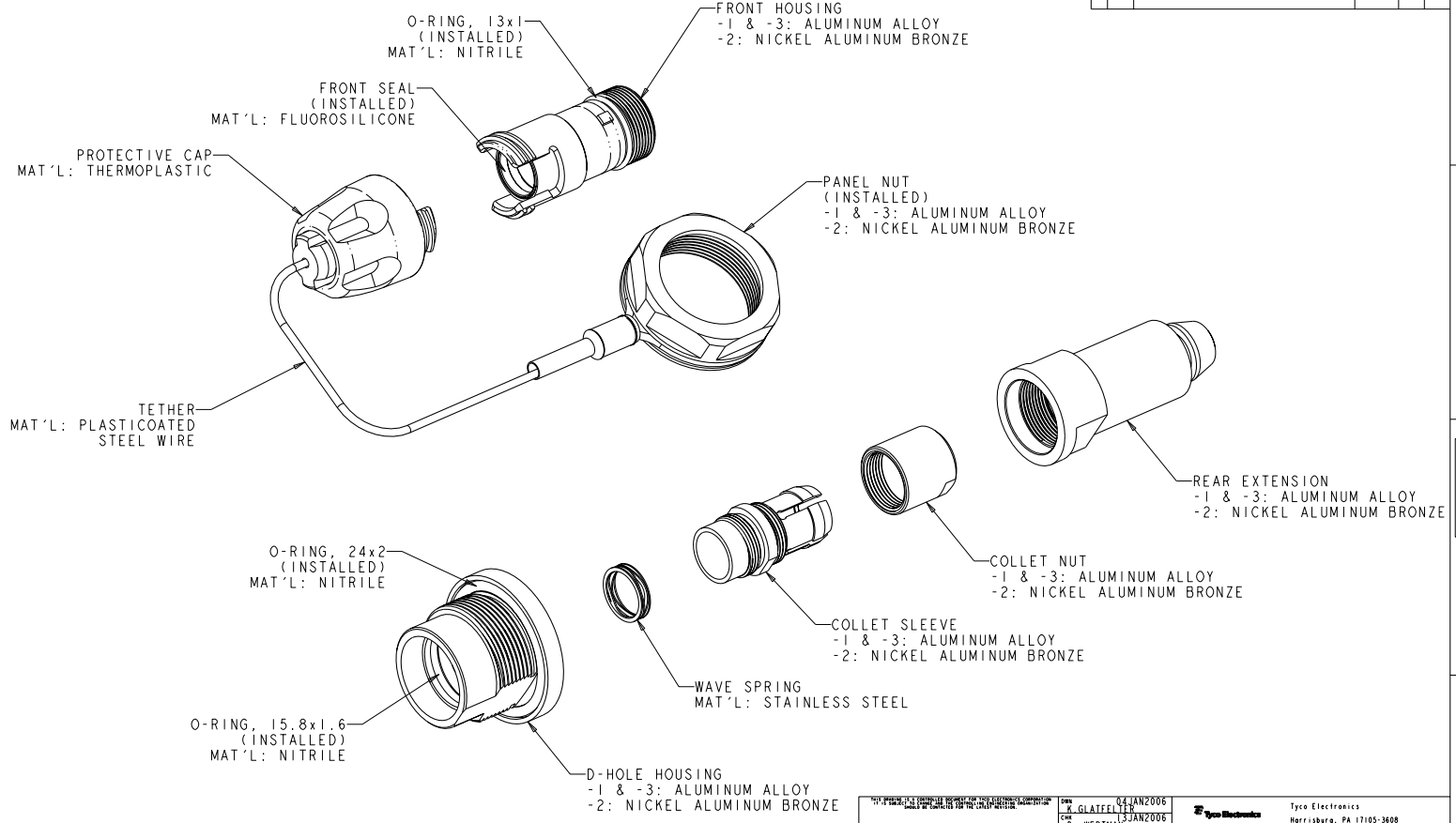
2

1

THIS DRAWING IS UNPUBLISHED. RELEASED FOR PUBLICATION BY TYCO ELECTRONICS CORPORATION. ALL RIGHTS RESERVED. COPYRIGHT 20

LOC		DIST		REVISIONS			
CE	16	P	LYR	DESCRIPTION	DATE	BY	APPR
		-	-	SEE SHEET 1	-	-	-

1. SHIPPED LOOSE PIECE AS SHOWN.



DIMENSIONS:		TOLERANCES UNLESS OTHERWISE SPECIFIED:		OWN	04 JAN2006	Tyco Electronics	
mm		AS LISTED		BY	R. GLATFELTY	Harrisburg, PA 17105-3608	
D		PLC	±	APPR	D. WERTMAN	NAME	
E		PLC	±	CONNECTOR SHELL KIT, SEALED			
F		PLC	±	D-HOLE BULKHEAD, PRO BEAM MINI			
G		PLC	±	APPLICATION SPEC			
H		PLC	±	SHEET CASE CODE DRAWING NO			
I		PLC	±	A200779 C=1918185			
J		PLC	±	RESTRICTED TO			
K		PLC	±	CUSTOMER DRAWING			
L		PLC	±	SCALE 2:1 SHEET 2 OF 2 REV B			

AMP 1471-B REV 3/04/2000