

4

3

2

1

THIS DRAWING IS UNPUBLISHED. RELEASED FOR PUBLICATION 20
 © COPYRIGHT 20 BY TYCO ELECTRONICS CORPORATION. ALL RIGHTS RESERVED.

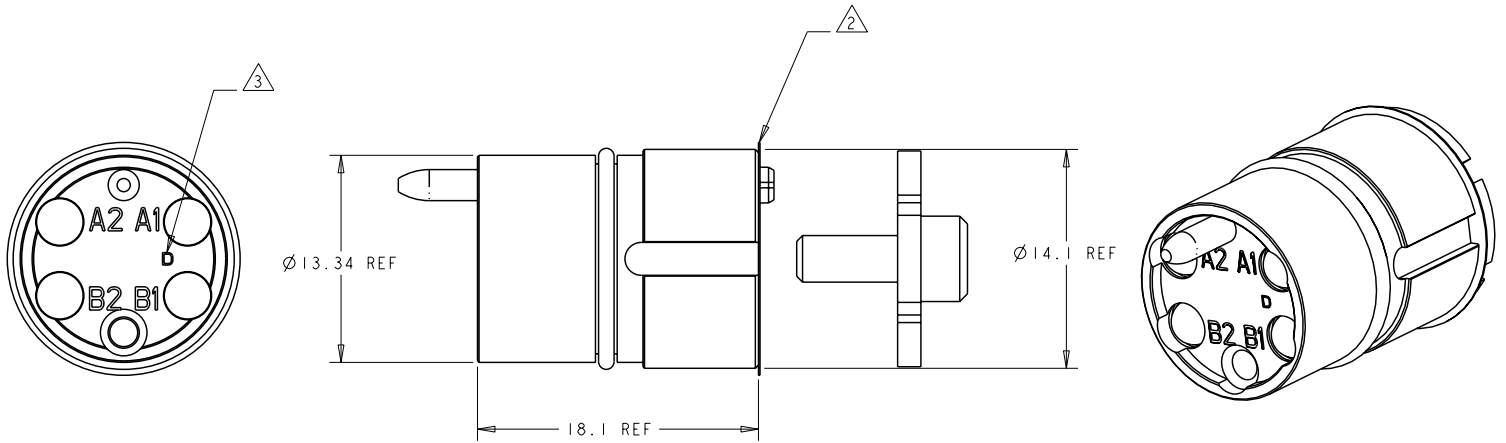
LOC	DIST	REVISIONS					
CE	16	P	LTR	DESCRIPTION	DATE	DWN	APVD
		A		REL PER EC 0A00-0844-02	08OCT2002	EJH	DW
		C		REVISE PER 0A00-0313-03	15JUL03	KG	DW
		D		REVISE PER 0A00-0359-03	28OCT03	KG	DW
		E		ECR-06-026207	19JUN07	KG	DW

NOTES:
 1. USE WITH FERRULE ASSEMBLY KIT P/N 1588700-1. QUANTITY OF 4 REQUIRED. FERRULE MUST BE FLAT-POLISHED DURING FIBER TERMINATION FOR BEST PERFORMANCE.

2. PROTECTIVE LABEL APPLIED AFTER FINAL CLEAN ROOM TEST TO PREVENT OPTICAL CAVITY CONTAMINATION. REMOVE ONLY WHEN READY TO ASSEMBLE.

3. DUAL 850/1300nm WAVELENGTH LENS IDENTIFIER.

4. THIS PRODUCT HAS NOT COMPLETED VALIDATION TESTING.



4 CHANNEL, 850/1300nm MM	1515747-1
DESCRIPTION	PART NO.

<small>THIS DRAWING IS A CONTROLLED DOCUMENT FOR TYCO ELECTRONICS CORPORATION IT IS SUBJECT TO CHANGE AND THE CONTROLLING ENGINEERING ORGANIZATION SHOULD BE CONTACTED FOR THE LATEST REVISION.</small>		DWN 08OCT2002 E. HOPKINS CHN 08OCT2002 D. WERTMAN APVD 08OCT2002 D. WERTMAN	Tyco Electronics Harrisburg, PA 17105-3608
DIMENSIONS: mm	TOLERANCES UNLESS OTHERWISE SPECIFIED: 0 PLC ± 1 PLC ± 2 PLC ± 3 PLC ± 4 PLC ± ANGLES ±	NAME INSERT ASSEMBLY, 4 CHANNEL, 850/1300nm MM PRO BEAM JR.	RESTRICTED TO
MATERIAL STAINLESS ALLOYS & NBR	FINISH N/A	WEIGHT -	SIZE A3
CUSTOMER DRAWING		CAGE CODE 00779	DRAWING NO 1515747

AMP 1470-19 REV 31MAR2000

Pro/ENGINEER DRAWING