

4

3

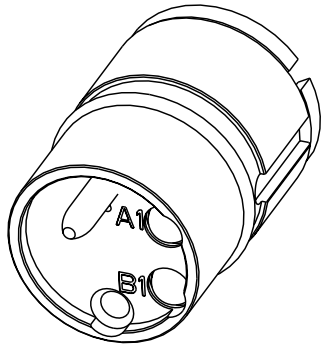
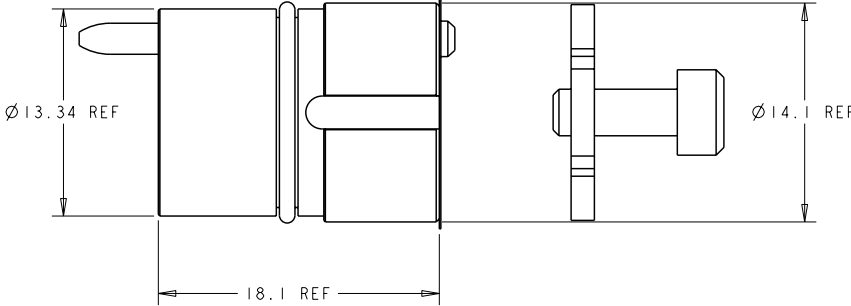
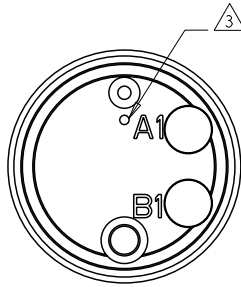
2

1

THIS DRAWING IS UNPUBLISHED. RELEASED FOR PUBLICATION 20
 © COPYRIGHT 20 BY TYCO ELECTRONICS CORPORATION. ALL RIGHTS RESERVED.

LOC	DIST	REVISIONS				
P	LTR	DESCRIPTION	DATE	DWN	APVD	
CE	16					
		D1 ECR-09-003453	13FEB2009	KG	DW	

- NOTES:**
- USE WITH FERRULE ASSEMBLY KIT P/N 1588908-2 (125um), OR 1588908-1 (126um). QUANTITY OF 2 REQUIRED. FERRULE MUST BE PC-POLISHED DURING FIBER TERMINATION FOR BEST PERFORMANCE.
 - PROTECTIVE LABEL APPLIED AFTER FINAL CLEAN ROOM TEST TO PREVENT OPTICAL CAVITY CONTAMINATION. REMOVE ONLY WHEN READY TO ASSEMBLE.
 - SINGLEMODE IDENTIFIER
 - THIS PRODUCT HAS NOT COMPLETED VALIDATION TESTING.



SCALE 4:1

2 CHANNEL, 1310nm SM	1515739-1
DESCRIPTION	PART NO.

<small>THIS DRAWING IS A CONTROLLED DOCUMENT FOR TYCO ELECTRONICS CORPORATION AND IS SUBJECT TO CHANGE. THE CONTROLLING ENGINEERING ORGANIZATION SHOULD BE CONTACTED FOR THE LATEST REVISION.</small>		DWN 08OCT2002 E. HOPKINS CHN 08OCT2002 D. WERTMAN APVD 08OCT2002 D. WERTMAN	Tyco Electronics Harrisburg, PA 17105-3608
DIMENSIONS: mm	TOLERANCES UNLESS OTHERWISE SPECIFIED: 0 PLC ± 1 PLC ± 2 PLC ± 3 PLC ± 4 PLC ± ANGLES ±	NAME INSERT ASSEMBLY, PRO BEAM JR., 2 CHANNEL, 1310nm SM	RESTRICTED TO
	MATERIAL STAINLESS ALLOYS & NBR	FINISH N/A	SIZE CAGE CODE DRAWING NO A3 00779 C-1515739
CUSTOMER DRAWING		WEIGHT -	SCALE 4:1 SHEET 1 OF 1 REV D1

AMP 1470-19 REV 31MAR2000
 Pro/ENGINEER DRAWING