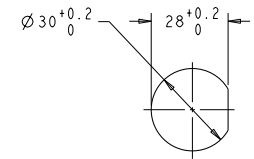
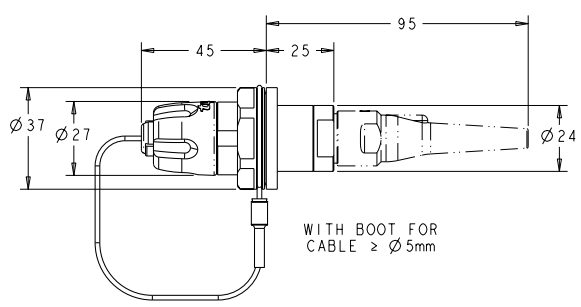
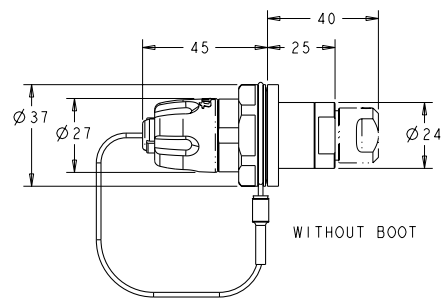
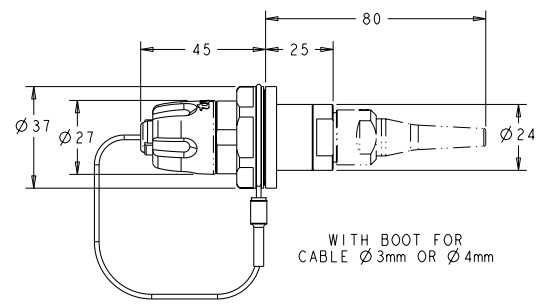


LOC		DIST		REVISIONS			
P	LYR	DESCRIPTION	DATE	BY	APPV		
I		PPR 06-895	02JUN08	KG	DW		
A		ECR-08-027292	29OCT2008	KG	DW		

- ASSEMBLY SHOWN FOR REFERENCE ONLY. SHIPPED LOOSE PIECE AS SHOWN ON PAGE 2.
- ALL ASSEMBLY DIMENSIONS ARE FOR REFERENCE ONLY.
- ⚠️ PANEL SHOULD BE BETWEEN 1mm AND 4mm THICKNESS.
- THIS PRODUCT HAS NOT COMPLETED VALIDATION TESTING.
- COMPLETE THE CONNECTOR ASSEMBLY BY ADDING EACH OF THE FOLLOWING PRO BEAM JR KITS:
 - EXPANDED BEAM INSERT ASSEMBLY KIT
 - CABLE ADAPTER KIT, SIZED TO THE CABLE JACKET DIAMETER
 - FERRULE KIT, ONE PER FIBER



RECOMMENDED PANEL CUT-OUT ⚠️

NICKEL ALUMINUM BRONZE	1918939-2
ALUMINUM	1918939-1
HOUSING ALLOY	PART NUMBER

VIEWS SHOWN WITH CABLE ADAPTER VARIATIONS IN PHANTOM LINES FOR VISUAL AND DIMENSIONAL PURPOSES ONLY

DIMENSIONS: mm 0 PLC ± 1 PLC ± 2 PLC ± 3 PLC ± 4 PLC ± ANGLES ± FINISH ±		DATE: 02NOV2006 CDR: R. GLATFELT CHK: D. WERIMAN APPR: D. WERIMAN PRODUCT SPEC: JUN2008 APPLICATION SPEC: JUN2008	NAME: CONNECTOR SHELL KIT, STD. D-HOLE BULKHEAD, PRO BEAM JR. SIZE: A2 CASE CODE: 00779 DRAWING NO: 1918939 RESTRICTED TO: - SCALE: 1:1 SHEET: 1 OF 2 REV: A
MATERIAL: HARD ANODIZE (A1 ONLY) CUSTOMER DRAWING		Tyco Electronics Harrisburg, PA 17105-3608	PART NUMBER: 1918939-2

4

3

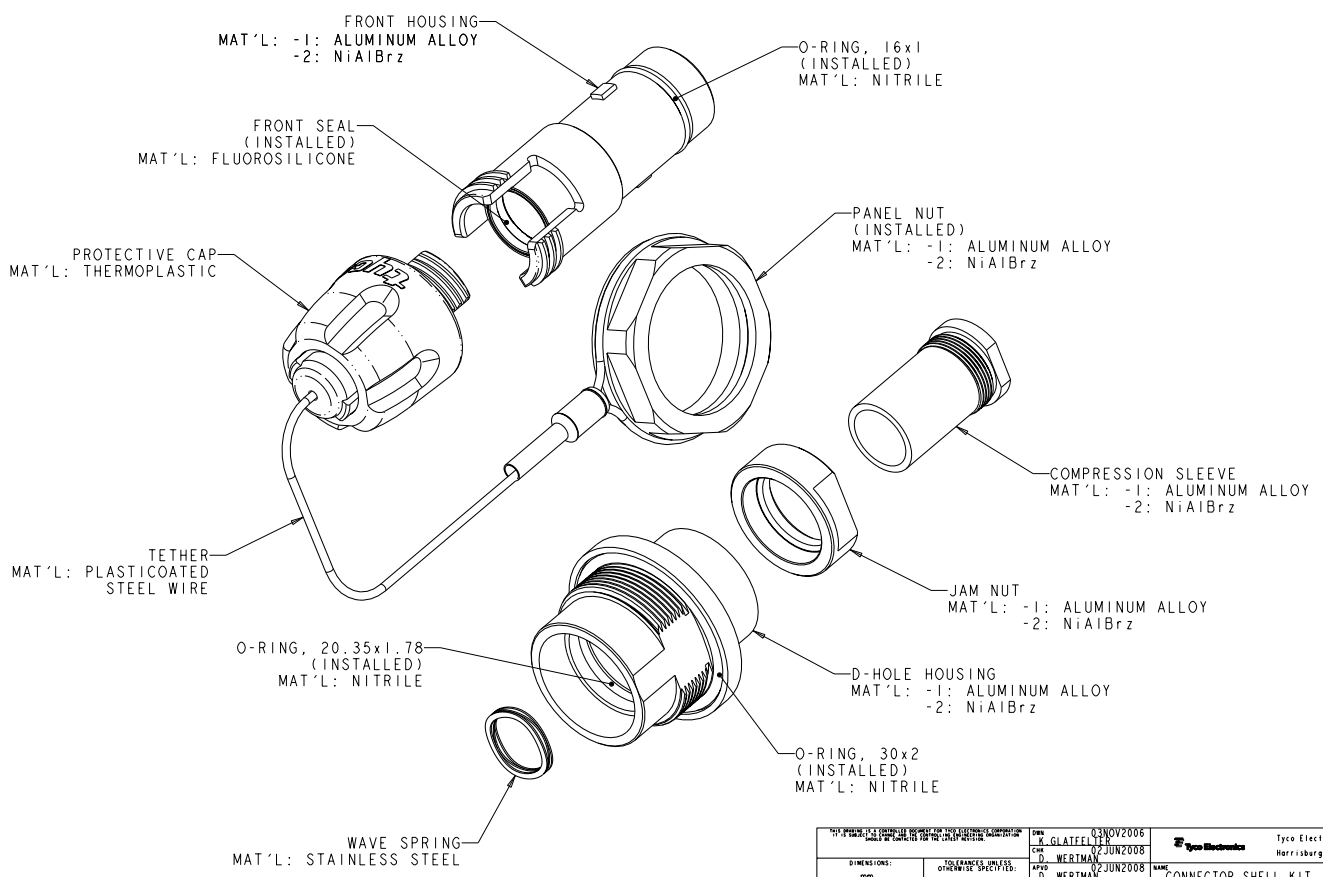
2

1

THIS DRAWING IS UNPUBLISHED. RELEASED FOR PUBLICATION BY TYCO ELECTRONICS CORPORATION. ALL RIGHTS RESERVED. COPYRIGHT 20

LOC		DIST		REVISIONS			
P	LYR	DESCRIPTION	DATE	BY	APPR		
-	-	SEE SHEET 1	-	-	-	-	-

1. SHIPPED LOOSE PIECE AS SHOWN.



DIMENSIONS:		DATE: 03NOV2006		DRAWN: R. GLATFELT		TYCO ELECTRONICS	
mm		DATE: 02JUN2008		CHKD: D. WERTMAN		Harrisburg, PA 17105-3608	
TO FINISHES ONLY:		DATE: 02JUN2008		APPR: D. WERTMAN		NAME: CONNECTOR SHELL KIT, STD. D-HOLE BULKHEAD, PRO BEAM JR.	
OPERATION SPEC:		APPLICATION SPEC:		SHEET: A200779		DRAWING NO: 1918939	
MATERIAL: AS LISTED		WEIGHT: -		SCALE: 2:1		RESTRICTED TO:	
HARD ANODIZE (A1 ONLY)		CUSTOMER DRAWING		SHEET: 2 OF 2		REV: A	

AMP 1471-B REV 3/04/2000