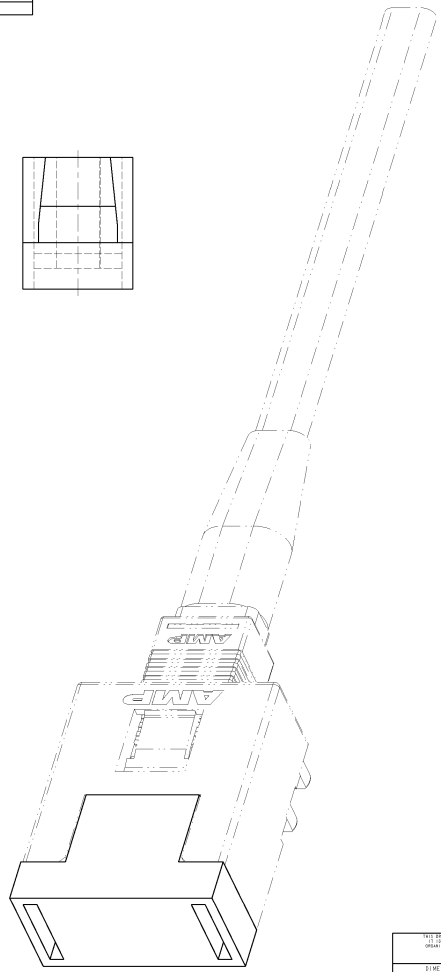
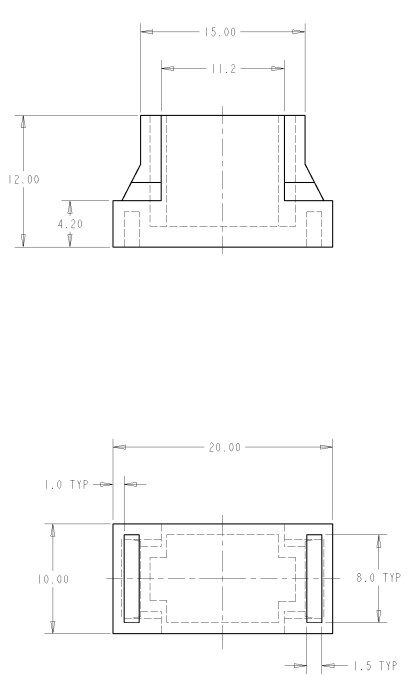


THIS DRAWING IS UNPUBLISHED. RELEASED FOR PUBLICATION
 (C) COPYRIGHT 14 BY AMP INCORPORATED. ALL RIGHTS RESERVED.



SCALE 4:1

REV	DATE	DESCRIPTION	DATE	BY	APP'D
A	REV PER EC 0400-0572-97		11NOV97	TG	
B	REVISED PER ECN 0400-0050-99		07NOV99	JDL	LAB
B1	REV PER ECO-10-000445		11JAN10	KK	AEG

- 1. MATERIAL: THERMOPLASTIC ELASTOMER.
- 2. BULKPACKAGE 25 PIECES.
- 3. RETENTION FORCE: 1/2 LB MIN.
- 4. OBSOLETE PARTS: OBSOLETE CIS STREAMLINING PER D.RENAUD/D.SINISI

COLOR	PART NUMBER
RED	492578-7
BLUE	492578-5
OBSOLETE GREEN	492578-3
BLACK	492578-1

<small>THIS DRAWING IS UNPUBLISHED. RELEASED FOR PUBLICATION. ALL RIGHTS RESERVED. (C) COPYRIGHT 14 BY AMP INCORPORATED. ALL RIGHTS RESERVED.</small>		DATE: 1/5/99 BY: T.GREEN CHK: L.BARKUS APP: K.MONROE	AMP Incorporated Harrisburg, PA 17105-3400
DIMENSIONS: mm (INCHES)	DIMENSIONS (INCHES) 0 PLC RD-1 1 PLC RD-1 2 PLC RD-01 3 PLC RD-001 4 PLC RD-0001 ANGLES FINISH	PART NUMBER: 492578-1 APPLICATION SPEC: - WEIGHT: - CUSTOMER DRAWING: -	AMP DAUGHTER CARD HOUSING DUST COVER TITLE: DAUGHTER CARD HOUSING DUST COVER CASE CODE: - DRAWING NO: 492578 SCALE: 4:1 SHEET: 1 OF 1 REV: B1

AMP 1471-9 REV 0004334
 PLS-ENGINEER DRAWING