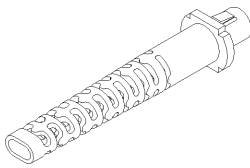
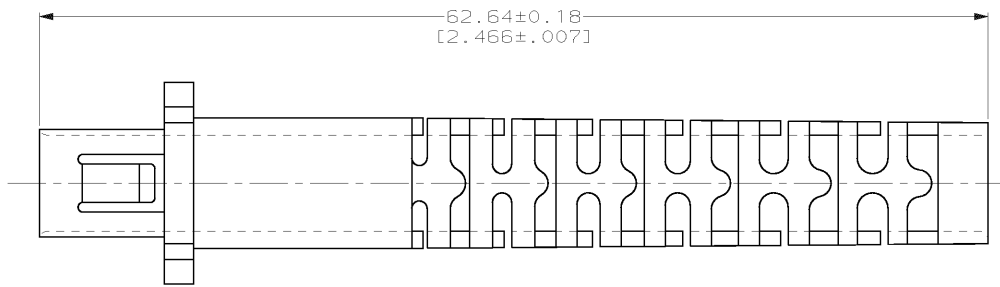
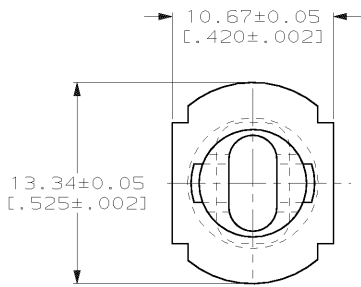


DRAWING MADE IN THIRD ANGLE PROJECTION

THIS DRAWING IS UNPUBLISHED. RELEASED FOR PUBLICATION, 19 .  
 © COPYRIGHT 19 BY AMP INCORPORATED. ALL INTERNATIONAL RIGHTS RESERVED.

LOC	DIST	REVISIONS				
P	F	ZONE	LTR	DESCRIPTION	DATE	APPD
CE	16			C REV PER 0A00-0798-03	200CT03	DE/SB



- ① POLYPROPYLENE MOLDING COMPOUND, COLOR: BEIGE
- ② POLYPROPYLENE MOLDING COMPOUND, COLOR: DEC LT GRAY
- ③ POLYPROPYLENE MOLDING COMPOUND, COLOR: TANDEM BLACK

<b>OBSOLETE</b>	③	502016-3
<b>OBSOLETE</b>	②	502016-2
	①	502016-1
		MATERIAL PART NUMBER

DO NOT SCALE PRINT. UNLESS SPECIFIED DIMENSIONS IN mm [INCHES] TOLERANCES ON: 2 PLG DEC ± +.010 3 PLG DEC ± - ANGLES ± -	DR 12-16-92 R.HILEMNN CHK 12-16-92 M.PETERSON APPD 12-16-92 M.PETERSON APPD 12-16-92 D.FISHER	<b>AMP</b> AMP Incorporated Harrisburg, PA 17105-3608
MATERIAL POLYPROPYLENE	PRODUCT SPEC -	NAME DUPLEX STRAIN RELIEF, LIGHT DUTY DUAL, FIXED SHROUD DUPLEX, OPTIMATE
FINISH SEE TABLE	APPLICATION SPEC -	SIZE <b>B</b> CAGE CODE 00779 DRAWING NO. ©=502016
	WEIGHT -	SCALE 4:1 SHEET 1 OF 1

THIS DRAWING IS A CONTROLLED DOCUMENT FOR AMP INCORPORATED. IT IS SUBJECT TO CHANGE AND THE CONTROLLING ENGINEERING ORGANIZATION SHOULD BE CONTACTED FOR THE LATEST REVISION.