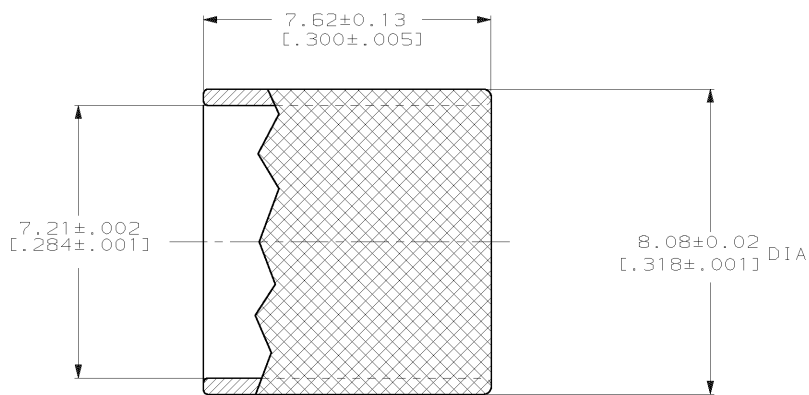
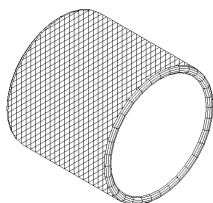


DRAWING MADE IN THIRD ANGLE PROJECTION

THIS DRAWING IS UNPUBLISHED. RELEASED FOR PUBLICATION, 19 .  
 © COPYRIGHT 19 BY AMP INCORPORATED. ALL INTERNATIONAL RIGHTS RESERVED.

LOC	DIST	REVISIONS				
P	F	ZONE	LTR	DESCRIPTION	DATE	APPD
CE	16					
		C		REVISE PER 0A00-0717-98	04DEC98	JPM/MB
		C		REVISE PER 0A00-0588-03	26MAR04	KG/5B



1 BULK PACKAGED, 100 PCS.

1 OBSOLETE 501784-3  
 501784-1  
 PART NUMBER

PART NO		PART NO	
DO NOT SCALE PRINT. UNLESS SPECIFIED DIMENSIONS IN mm TOLERANCES ON: 2 PLC DEC ± - 3 PLC DEC ± - ANGLES ± -	DR B.BRIGGS 8-10-89 CHK D.SONNER 8-10-89 APPD S.OWENS 8-10-89 APPD S.OWENS 8-10-89	AMP INCORPORATED Harrisburg, Pa. 17105	
MATERIAL BRASS	PRODUCT SPEC -	NAME CRIMP RING, INNER, FIXED SHROUD DUPLEX, OPTIMATE	
FINISH -	APPLICATION SPEC -	SIZE B	FSCM NO 00779
	WEIGHT -	SCALE 10:1	DRAWING NO 501784
			SHEET 1 OF 1

AMP 1470-15 REV 3-87  
 04-DEC-98 08:30:46 amp40372 /home/amp40372/edmod

CUSTOMER DRAWING