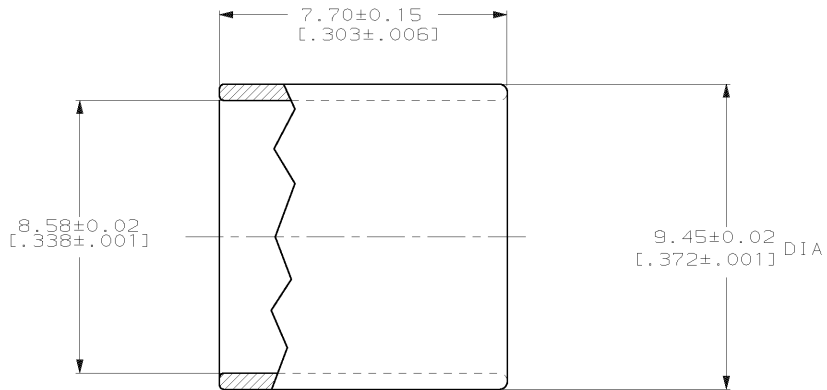
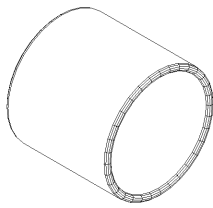


DRAWING MADE IN THIRD ANGLE PROJECTION

THIS DRAWING IS UNPUBLISHED. RELEASED FOR PUBLICATION, 19 .
 © COPYRIGHT 19 BY AMP INCORPORATED. ALL INTERNATIONAL RIGHTS RESERVED.

LOC	DIST	REVISIONS				
P	F	ZONE	LTR	DESCRIPTION	DATE	APPD
CE	16		C	REVISE PER 0A00-0588-03	26MAR04	KG/SB



BULK PACKAGED, 100 PCS.

OBSOLETE 501785-5
 501785-1
 PART NUMBER

DO NOT SCALE PRINT. UNLESS SPECIFIED DIMENSIONS IN mm TOLERANCES ON: 2 PLC DEC ± - 3 PLC DEC ± - ANGLES ± -		DR B.BRIGGS 8-10-89	AMP INCORPORATED Harrisburg, Pa. 17105	
MATERIAL COPPER		CHK D.SONNER 8-10-89	NAME CRIMP RING, OUTER, FIXED SHROUD DUPLEX, OPTIMATE	
FINISH -		APPD S.OWENS 8-10-89	SIZE B	FSCM NO 00779
		APPD S.OWENS 8-10-89	DRAWING NO 501785	
		PRODUCT SPEC -	SCALE 10:1	SHEET 1 OF 1
		APPLICATION SPEC -		
		WEIGHT -		

AMP 1470-15 REV 3-87
 04-DEC-98 08:40:43 amp40372 /home/amp40372/edmod

CUSTOMER DRAWING