

4

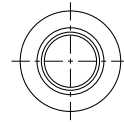
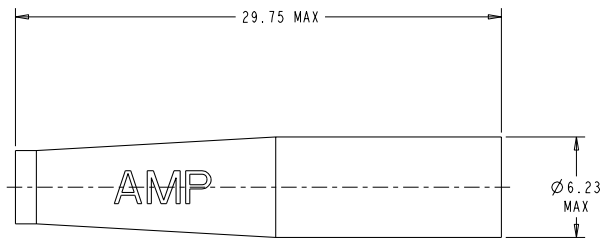
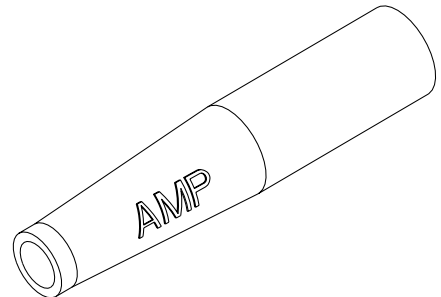
3

2

1

THIS DRAWING IS UNPUBLISHED. RELEASED FOR PUBLICATION
 BY TYCO ELECTRONICS CORPORATION. ALL RIGHTS RESERVED.
 COPYRIGHT © BY TYCO ELECTRONICS CORPORATION. ALL RIGHTS RESERVED.

REV	DATE	BY	APP'D
T	28JAN2005	BB	SB
U	02MAR2006	BB	SB
V	29MAY2006	BB	SB
W	13JUL2006	BB	SB



△ MATERIAL: THERMOPLASTIC ELASTOMER. SEE TABLE FOR COLORS.

AMP	GREEN	502716-6
AMP	RED	502716-5
AMP	BLUE	502716-4
AMP	BEIGE	502716-3
AMP	YELLOW	502716-2
AMP	BLACK	502716-1
LOGO	COLOR	PART NUMBER

DIMENSIONS: mm 	TO MANUFACTURE: DIMENSIONS: 0 PLC ±" 1 PLC ±" 2 PLC ±" 3 PLC ±" 4 PLC ±" ANGLES ±° FINISH	DWG: 12JUL2002 E. BOGAR 12JUL2002 D. ERODAN 12JUL2002 AMP S. BUCHTER 12JUL2002 NAME: BOOT, PUSH-ON APPLICATION SPEC: - WEIGHT: - CUSTOMER DRAWING	Tyco Electronics Harrisburg, PA 17105-3608 AMP SIZE: A2 CASE CODE: 00779 DRAWING NO: 502716 RESTRICTED TO: - SCALE: 6:1 SHEET: 1 OF 1 REV: W
-----------------------	---	--	---