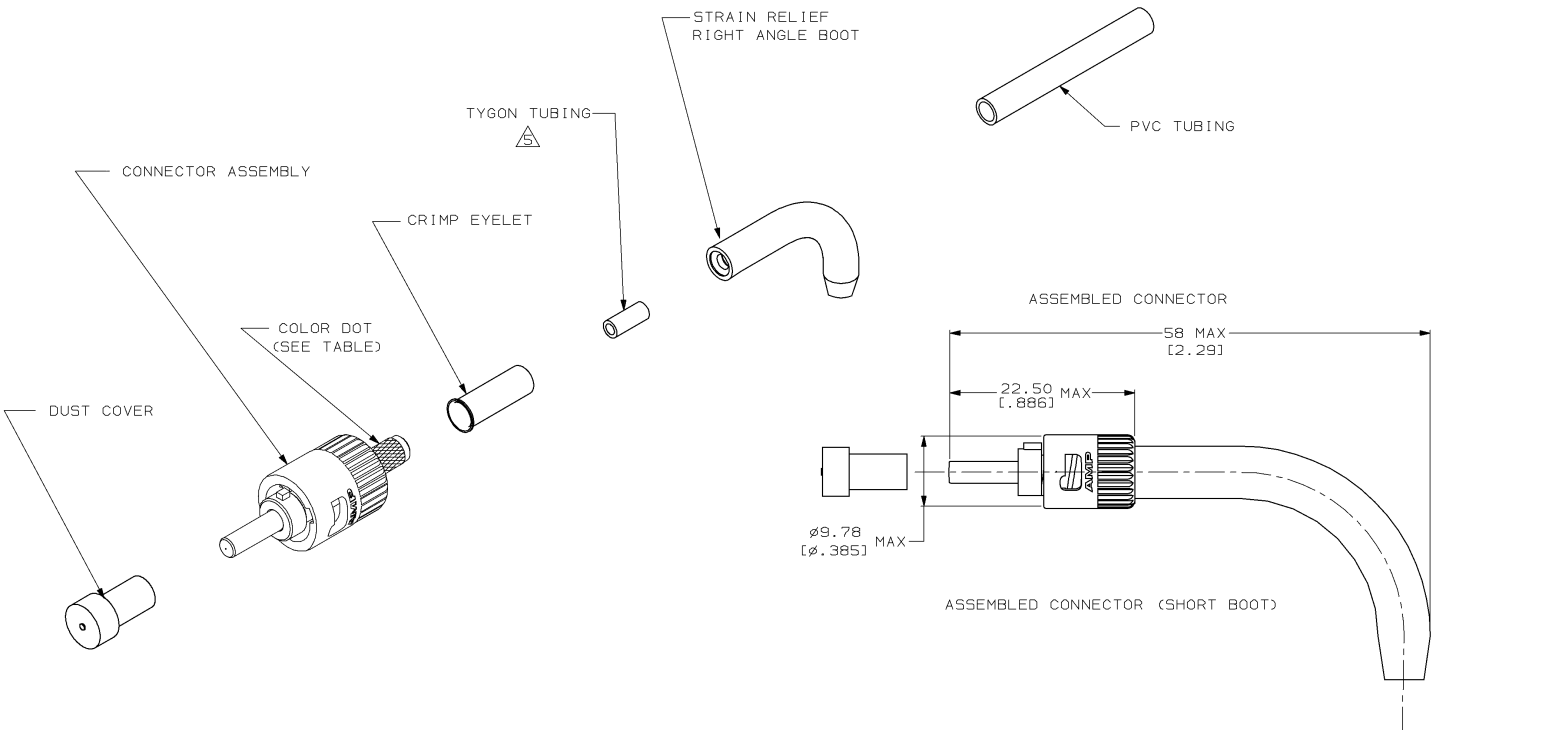


DRAWING MADE IN THIRD ANGLE PROJECTION
 THIS DRAWING IS UNPUBLISHED. RELEASED FOR PUBLICATION
 © COPYRIGHT 19 BY AMP INCORPORATED. ALL INTERNATIONAL RIGHTS RESERVED.

| LOC | | DIST | | ZONE | | LTR | | REVISIONS | | DATE | APPD |
|-----|----|------|---|------|--|-----|--|-----------|----------------------|---------|------|
| CE | 16 | P | F | | | | | E | REV PER 0A00-0406-95 | 11-1-95 | DDE |



- 1. DIMENSIONS IN [] ARE IN INCHES.
- 2. INSTRUCTION SHEET 6935.
- ⚠ BODY: BRASS
 CAPILLARY: CERAMIC
 COUPLING NUT: ZINC
 STRAIN RELIEF: TPE
- ⚠ BODY: ELECTROLESS NICKEL
 COUPLING NUT: ELECTROLESS NICKEL
- ⚠ USE WITH 900µm BUFFERED FIBER ONLY.

| OBSOLETE | BLACK | GREEN | FIBER SIZE | PART NO | |
|---|--------|----------------------------|---|--------------|------------|
| | BLACK | GREEN | 140±3 µm | 502674-2 | |
| | BLACK | GREEN | 125±2 µm | 502674-1 | |
| STRAIN RELIEF | | COLOR DOT | FIBER SIZE | PART NO | |
| DO NOT SCALE PRINT. UNLESS SPECIFIED DIMENSIONS IN mm TOLERANCES ON : | | DR 2-1-91 R. HILLMAN | AMP AMP INCORPORATED <small>Non-Isolating, Pg. 17105</small> CONNECTOR KIT, RIGHT ANGLE, 2.5mm BAYONET, OPTIMATE® | | |
| 2 PLC DEC # — | | CHK 2-1-91 B. BRIGGS | | | |
| 3 PLC DEC # — | | APPD 2-7-91 F. ANTONICELLI | | | |
| ANGLES # — | | PRODUCT SPEC 108-45113 | | | |
| MATERIAL | FINISH | APPLICATION SPEC | SIZE | FSCM NO | DRAWING NO |
| ⚠ | ⚠ | | C | 00779 | 502674 |
| WEIGHT | | SCALE | 2:1 | SHEET 1 OF 1 | |

METRIC

502674