

4

3

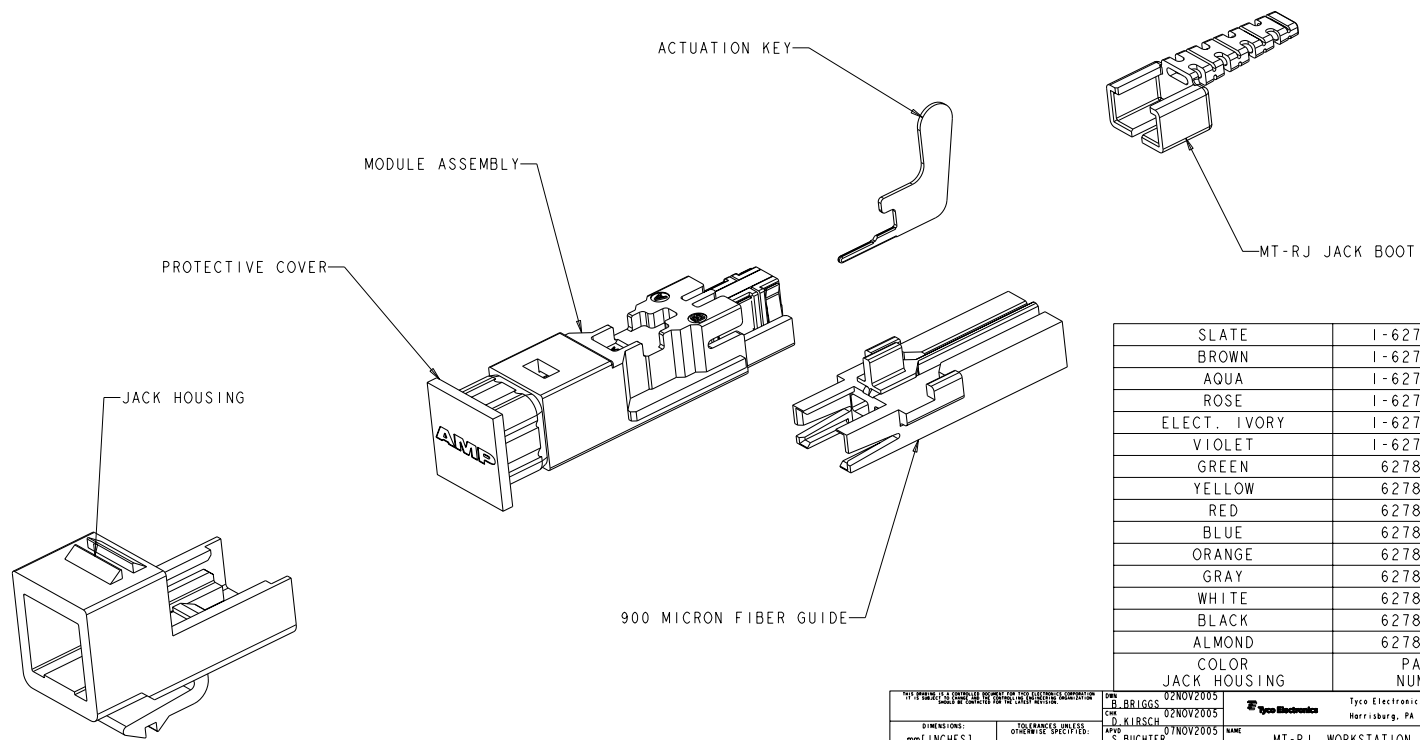
2

1

THIS DRAWING IS UNPUBLISHED. RELEASED FOR PUBLICATION BY TYCO ELECTRONICS CORPORATION. ALL RIGHTS RESERVED. COPYRIGHT 20

REV	DATE	BY	CHK	APPROV
A	16FEB2006	BB	DK	
A1	29OCT2006	BB	DK	

1. ENSURE THAT THE WALL BOX IS AT LEAST 50.8mm [2.0 INCHES] DEEP, WHEN INSTALLING MT-RJ WORKSTATION JACK KITS.



SLATE	1-6278415-5
BROWN	1-6278415-4
AQUA	1-6278415-3
ROSE	1-6278415-2
ELECT. IVORY	1-6278415-1
VIOLET	1-6278415-0
GREEN	6278415-9
YELLOW	6278415-8
RED	6278415-7
BLUE	6278415-6
ORANGE	6278415-5
GRAY	6278415-4
WHITE	6278415-3
BLACK	6278415-2
ALMOND	6278415-1
JACK HOUSING COLOR	PART NUMBER

DATE	02NOV2005	BY	B. BRIGGS	APP'D	D. A. LIRSCH	DATE	07NOV2005	NAME	S. BUCHTER
DIMENSIONS: mm (INCHES) TOLERANCES UNLESS OTHERWISE SPECIFIED: 0 PLC ±.1 1 PLC ±.15 2 PLC ±.2 3 PLC ±.3 4 PLC ±.4 ANGLES ±.1									
MATERIAL: - FINISH: - WEIGHT: - CUSTOMER DRAWING									
TITLE: MT-RJ, WORKSTATION JACK KIT, 62.5/125 APPLICATION SPEC: - PRODUCT SPEC: - CASE CODE: A200779 DRAWING NO: 6278415								RESTRICTED TO: - SCALE: 3:1 SHEET 1 OF 1 REV: A1	