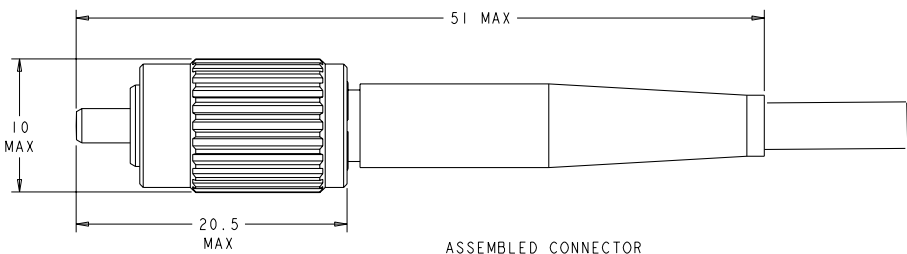
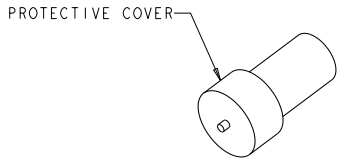
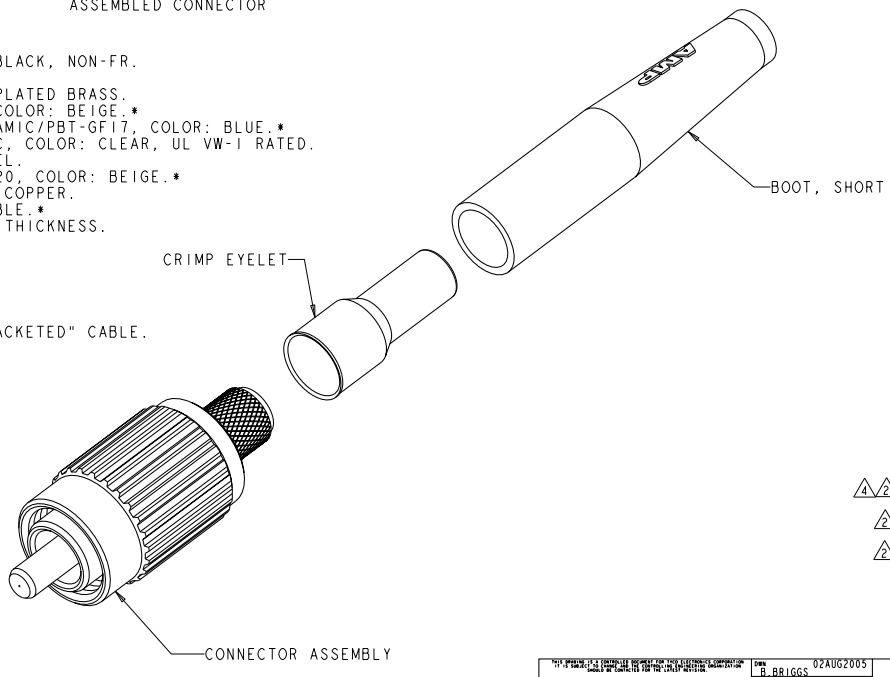


LOC	DIST	REVISIONS					
CE	00	P	LYR	DESCRIPTION	DATE	BY	APPR
		A		RELEASE TO ACTIVE	07JUN2006	BB	SM



△ MATERIAL:
 PROTECTIVE COVER: LDPE, BLACK, NON-FR.
 CONNECTOR SUB-ASSEMBLY:
 COUPLING NUT: NICKEL PLATED BRASS.
 PLUG BODY: PPS-GF40, COLOR: BEIGE.*
 FERRULE ASSEMBLY: CERAMIC/PBT-GF17, COLOR: BLUE.*
 EPOXY-FILL TUBING: PVC, COLOR: CLEAR, UL VW-1 RATED.
 SPRING: STAINLESS STEEL.
 RETAINER BODY: PES-GF20, COLOR: BEIGE.*
 CRIMP EYELET: TIN PLATED COPPER.
 BOOT: TPE, COLOR: SEE TABLE.*
 *UL94 V-0 RATED AT QUALIFYING THICKNESS.

△ BULK PACKAGE.
 3. TO BE USED WITH 3.0mm "LOOSE JACKETED" CABLE.
 △ CONTAINS NO EYELET OR BOOT.



△	-	5504649-9
△	BLUE	5504649-8
△	YELLOW	5504649-5
	YELLOW	5504649-4
	BLUE	5504649-1
	BOOT COLOR	PART NUMBER

DIMENSIONS: mm		TO BE USED WITH 3.0mm "LOOSE JACKETED" CABLE. DIMENSIONS:		DWG: B. BRIGGS 02AUG2005 CHK: S. MILLER 02AUG2005 APPR: S. BUCHTER 02AUG2005	Tyco Electronics Harrisburg, PA 17105-3608
DIMENSIONS: 0 PLC ± 1 PLC ± 2 PLC ± 3 PLC ± 4 PLC ± ANGLES ± MATERIAL △		PRODUCT SPEC: APPLICATION SPEC: WEIGHT: FINISH:		NAME: CONNECTOR KIT, SINGLEMODE, FC, 3.0mm	SHEET: A2 CASE CODE: 00779 DRAWING NO: 5504649 RESTRICTED TO:
CUSTOMER DRAWING				SCALE: 5:1	SHEET 1 OF 1 REV A