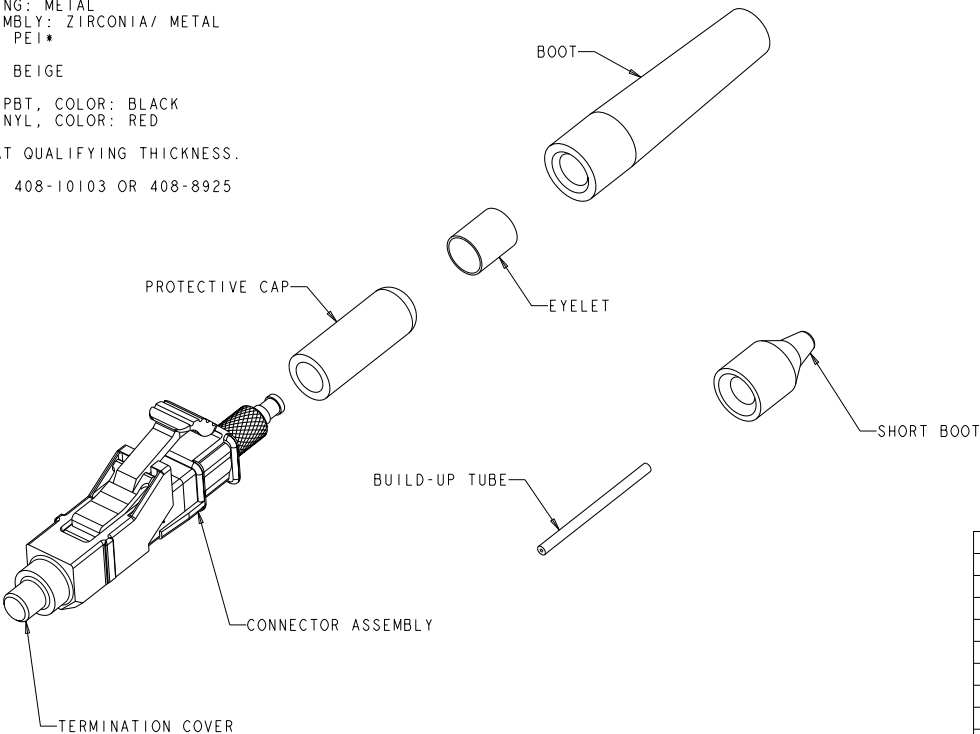


REVISIONS				
P	LY	DESCRIPTION	DATE	BY
1		NPR 08-0257	01APR2008	BB CB
2		ADD TERMINATION COVER	08JAN2009	BB CB

MATERIAL:
CONNECTOR ASSEMBLY:
CONNECTOR HOUSING: PPSU, COLOR: SEE -NO'S*
REAR BODY: METAL
COMPRESSION SPRING: METAL
FERRULE SUB ASSEMBLY: ZIRCONIA/ METAL
INTERNAL SPLICE: PEI*
PLUNGER: METAL
BOOTS: TPE, COLOR: BEIGE
BUILD-UP TUBE: TPE
TERMINATION COVER PBT, COLOR: BLACK
PROTECTIVE CAP: VINYL, COLOR: RED

*UL 94 V-0 RATED AT QUALIFYING THICKNESS.

2. INSTRUCTION SHEETS: 408-10103 OR 408-8925



SLATE	1-1985961-0
ORANGE	1985961-9
VIOLET	1985961-8
BROWN	1985961-7
AQUA	1985961-6
ROSE	1985961-5
BLUE	1985961-4
GREEN	1985961-3
YELLOW	1985961-2
RED	1985961-1
KEYED HOUSING COLOR	PART NO.

DIMENSIONS: mm		TO: BRAND'S DIVISION OPERATING SPEC 17155		OWN: B. BRIGGS 01APR2008 C. BENNETT 01APR2008 S. BUCHTER 01APR2008		Tyco Electronics Harrisburg, PA 17105-3608	
PRODUCT SPEC		APPLICATION SPEC		WEIGHT		RESTRICTED TO	
MATERIAL		FINISH		CUSTOMER DRAWING		SCALE 4:1 SHEET 1 OF 1 REV 2	