

4

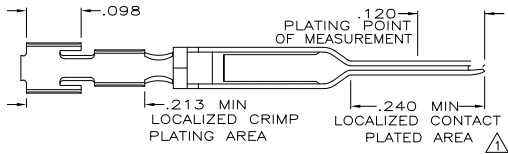
3

2

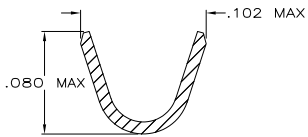
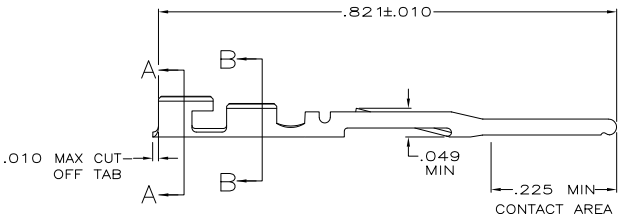
1

THIS DRAWING IS UNPUBLISHED. RELEASED FOR PUBLICATION  
 © COPYRIGHT BY TYCO ELECTRONICS CORPORATION. ALL RIGHTS RESERVED.

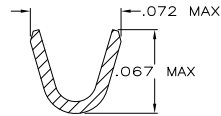
LOC	DIST	REVISIONS					
GP	00	P	LTR	DESCRIPTION	DATE	MIN	APD
		H		REVISED PER ECO-09-001588	03JUN2009		CJV/CWR



- △ FINISH: .000100 MIN THK BRIGHT TIN-LEAD IN LOCALIZED CRIMP PLATING AREA AND .000015 THK GOLD IN LOCALIZED CONTACT PLATING AREA OVER .000050 MIN THK NICKEL ON ENTIRE CONTACT.  
 -OR-  
 .000100 MIN THK BRIGHT TIN-LEAD IN LOCALIZED CRIMP PLATING AREA, GOLD FLASH OVER PALLADIUM-NICKEL, .000015 MIN TOTAL THK IN LOCALIZED CONTACT PLATING AREA, BOTH OVER .000050 MIN THK NICKEL ON ENTIRE CONTACT.
- 2. FOR 22-24 AWG WIRE WITH AN INSULATION RANGE OF .040-.056 DIA.
- △ FINISH: .000100 MIN THK TIN IN LOCALIZED CRIMP PLATING AREA AND .000015 THK GOLD IN LOCALIZED CONTACT PLATING AREA OVER .000050 MIN THK NICKEL ON ENTIRE CONTACT.  
 -OR-  
 .000100 MIN THK TIN IN LOCALIZED CRIMP PLATING AREA, GOLD FLASH OVER PALLADIUM-NICKEL, .000015 MIN TOTAL THK IN LOCALIZED CONTACT PLATING AREA, BOTH OVER .000050 MIN THK NICKEL ON ENTIRE CONTACT.



SECTION A-A  
SCALE 20:1



SECTION B-B  
SCALE 20:1

OBsolete	△	494033-3	494034-2
	△	494033-2	494034-1
		REELED PART NO	PART NO

THIS DRAWING IS A CONTROLLED DOCUMENT.		DN J. GALLUCCI 6-27-89	Tyco Electronics Corporation Harrisburg, PA 17105-3608	
DIMENSIONS: INCHES		OK S.L. ROCKER 6-28-89	Tyco Electronics	
TOLERANCES UNLESS OTHERWISE SPECIFIED:		APP -	CONTACT, PIN, .025 SQ ROUND WIRE, .100 CENTERLINE, FFC	
0 PLC ± .	1 PLC ± .	PRODUCT SPEC 108-9024	SIZE A2	CAGE CODE 00779
2 PLC ± .005	3 PLC ± .	APPLICATION SPEC 114-16003	DRAWING NO C=494034	
4 PLC ± .	ANGLES ± .	WEIGHT -	RESTRICTED TO	
MATERIAL PHOS. BRONZE	FINISH SEE TABLE	CUSTOMER DRAWING	SCALE 8:1	SHEET 1 of 1

AMP 1471-9 REV 31MM02002 (revised 070827 070891 (VYMM020002) (2) Computerization, Inc., Medway, Rensselaer, NY 12153)

494034

A