

4

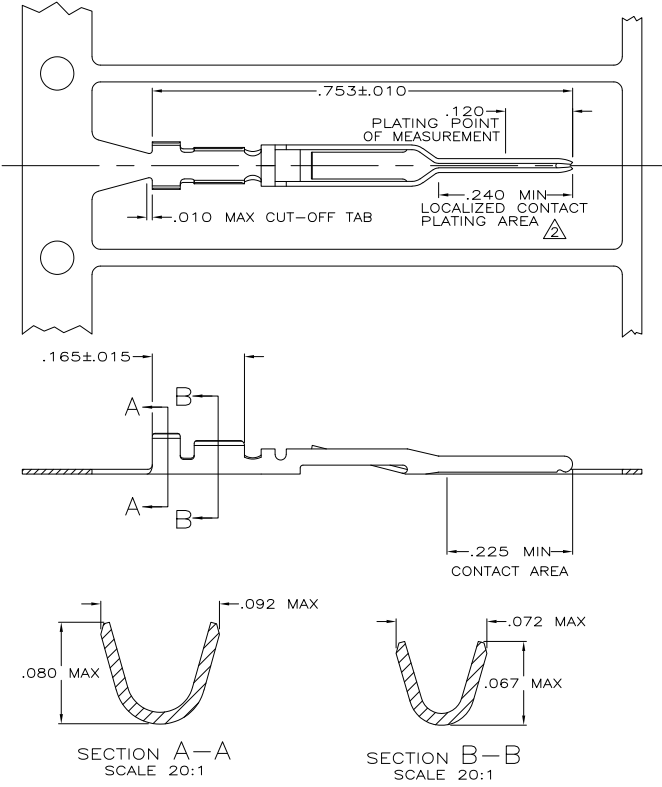
3

2

1

THIS DRAWING IS UNPUBLISHED. RELEASED FOR PUBLICATION
 © COPYRIGHT BY TYCO ELECTRONICS CORPORATION. ALL INTERNATIONAL RIGHTS RESERVED.

LOC	DIST	REVISIONS						
GP	00	P	LTR	DESCRIPTION	KIH	DATE	MIN	APD
		L		REVISED PER ECO-09-001588		25JUN2009		CJV/CWR



- ⚠ FOR MINI APPLICATOR.
- ⚠ FINISH: GOLD FLASH ALL OVER $.000015$ GOLD ON CONTACT AREA OVER $.000050$ MIN THK NICKEL OVER ENTIRE CONTACT, -OR- GOLD FLASH OVER PALLADIUM-NICKEL, $.000015$ MIN TOTAL THK IN LOCALIZED CONTACT PLATING AREA AND GOLD FLASH ON REMAINDER OVER $.000050$ MIN NICKEL ON ENTIRE CONTACT.
- 3. FOR 22-24 AWG WIRE WITH AN INSULATION RANGE OF $.040$ -. $.056$ DIA.

FINISH	86658-2	86656-2
	LOOSE PIECE PART NO.	PART NO.

THIS DRAWING IS A CONTROLLED DOCUMENT.		DN J. GALLUCCI 6-27-89	Tyco Electronics Corporation Harrisburg, PA 17105-3608	
DIMENSIONS: INCHES		OK D. L. ROCKER 6-28-89	CONTACT, PIN, $.025$ SQ, ROUND WIRE, $.100$ CENTERLINE, FFC	
OTHER DIMENSIONS UNLESS OTHERWISE SPECIFIED		APP G.D. MILLER 6-29-89	RESTRICTED TO	
MATERIAL PHOS. BRONZE		PRODUCT SPEC 108-9024	SIZE A2	CAGE CODE 00779
FINISH SEE TABLE		APPLICATION SPEC 114-16003	DRAWING NO. C-86656	
		WEIGHT -	CUSTOMER DRAWING	
		SCALE 8:1		SHEET 1 of 1

1471-9 (1/08)

86656

A