

4

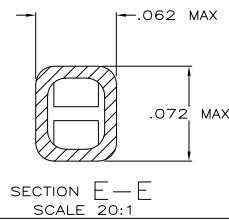
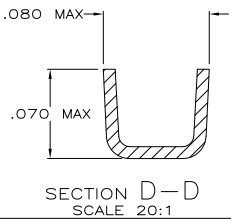
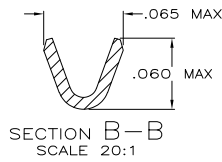
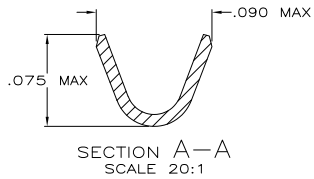
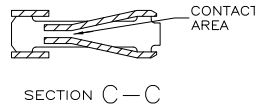
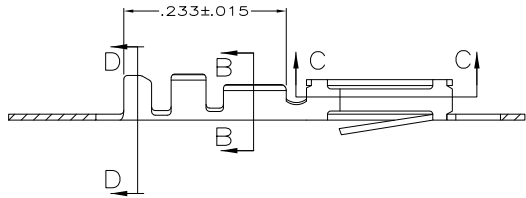
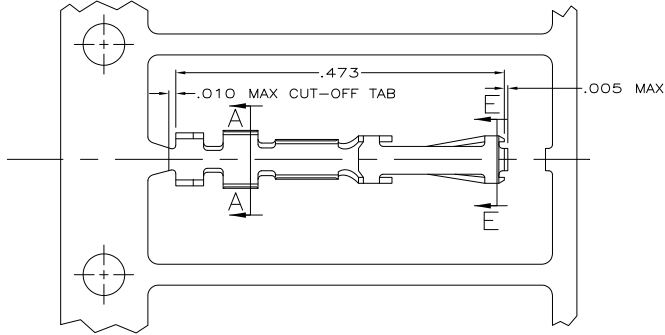
3

2

1

THIS DRAWING IS UNPUBLISHED. RELEASED FOR PUBLICATION
 © COPYRIGHT BY TYCO ELECTRONICS CORPORATION. ALL RIGHTS RESERVED.

LOC		DIBT		REVISIONS			
P	LTR	DESCRIPTION	DATE	MIN	APD		
CP	00	N	REVISED PER ECO-09-001588	25JUN2009	CJV	CWR	



- ⚠ FOR STANDARD APPLICATOR
- ⚠ FOR MINI APPLICATOR
- ⚠ FINISH: GOLD FLASH ALL OVER, .000015 MIN THK GOLD ON LOCALIZED CONTACT PLATING AREA OVER .000050 MIN THK NICKEL ON ENTIRE CONTACT.
-OR-
.000050 MIN THK NICKEL UNDERPLATE ON ENTIRE CONTACT, GOLD FLASH OVER PALLADIUM-NICKEL, .000015 MIN TOTAL THK ON LOCALIZED CONTACT PLATING AREA AND GOLD FLASH OVER REMAINDER OF CONTACT.
- ⚠ FINISH: GOLD FLASH ALL OVER, .000030 MIN THK GOLD ON LOCALIZED CONTACT PLATING AREA OVER .000050 MIN THK NICKEL ON ENTIRE CONTACT.
- ⚠ FINISH: GOLD FLASH ALL OVER, .000050 MIN THK GOLD ON LOCALIZED CONTACT PLATING AREA OVER .000050 MIN THK NICKEL ON ENTIRE CONTACT.
- ⚠ FINISH: .000100-.000200 THK BRIGHT TIN-LEAD OVER .000050 MIN THK NICKEL ON ENTIRE CONTACT.
- 7. FOR 26-32 AWG WIRE WITH AN INSULATION RANGE OF .025-.048 DIA.
- ⚠ OBSOLETE PART NUMBER

	LOOSE PIECE	⚠	⚠	1-88017-9
	LOOSE PIECE	⚠	⚠	1-88017-7
		⚠	⚠	1-88017-6
		⚠	⚠	1-88017-5
		⚠	⚠	1-88017-4
		⚠	⚠	1-88017-2
		⚠	⚠	1-88017-1
		⚠	⚠	1-88017-0
	LOOSE PIECE	⚠	⚠	88017-8
SUPSD BY 88017-6	LOOSE PIECE	⚠		88017-7
	LOOSE PIECE	⚠		88017-6
SUPSD BY 88017-2		⚠		88017-4
		⚠	⚠	88017-3
		⚠	⚠	88017-2
	REMARKS		FINISH	PART NO.

THIS DRAWING IS A CONTROLLED DOCUMENT.		DR. S. MOYER 6-8-89	Tyco Electronics Corporation Harrisburg, PA 17105-3608	
DIMENSIONS: INCHES		CHK. D.L. ROCKER 6-8-89	STANDARD PRESSURE CONTACT, RCPT., ROUND WIRE, .100 CENTERLINE, FFC	
MATERIAL: PHOS. BRONZE		FINISH: SEE TABLE	SIZE: A2	CAGE CODE: 00779
PRODUCT SPEC: 108-9024		APPLICATION SPEC: 114-16003	DRAWING NO: C-88017	
WEIGHT: -		CUSTOMER DRAWING		SCALE: 10:1 SHEET: 1 of 1 REV: N