

4

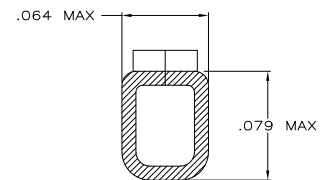
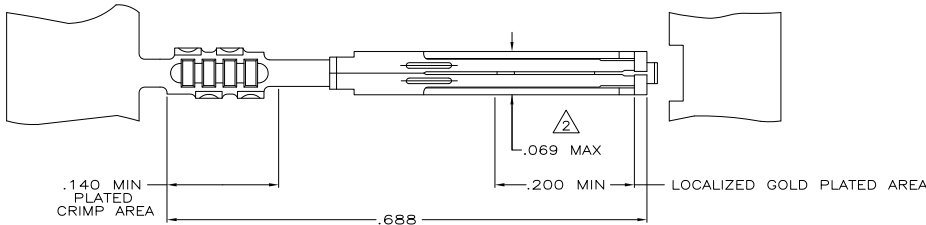
3

2

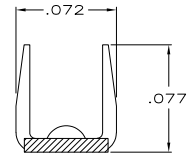
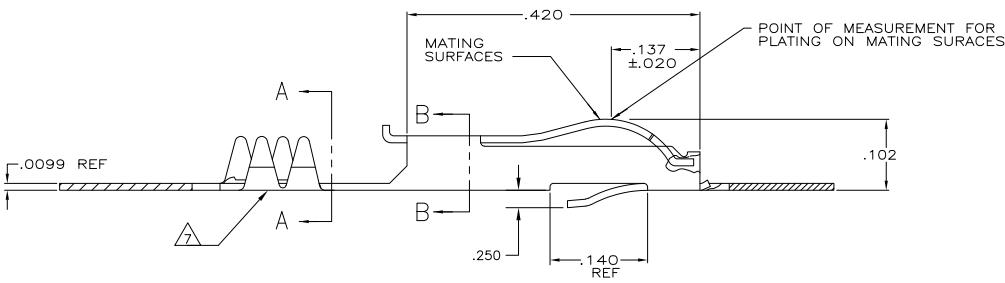
1

THIS DRAWING IS UNPUBLISHED. RELEASED FOR PUBLICATION
 © COPYRIGHT BY TYCO ELECTRONICS CORPORATION. ALL RIGHTS RESERVED.

LOC	DIST	REVISIONS		
GP	00	P LTR	DESCRIPTION	DATE
		AH	REVISED PER ECO-10-014692	4NOV2010
				CJV/CWR



SECTION B-B



SECTION A-A

- 1 PREPLATED WITH NICKEL UNDERPLATE .000050 MIN THK ON ENTIRE CONTACT WITH GOLD .000015 MIN THK ON MATING SURFACES IN LOCALIZED AREA AND PLATED WITH BRIGHT TIN-LEAD .000100 MIN THK IN CRIMP AREA.
- 2 .069 MAX ALLOWED IN LOCKING LATCH AREA FOR .140 REF LENGTH.
- 3 PREPLATED WITH NICKEL UNDERPLATE .000050 MIN THK ON ENTIRE CONTACT WITH GOLD .000030 MIN THK ON MATING SURFACES IN LOCALIZED AREA AND PLATED WITH BRIGHT TIN-LEAD .000100 MIN THK IN CRIMP AREA.
- 4 PLATED WITH NICKEL UNDERPLATE .000050 MIN THK ON ENTIRE CONTACT WITH GOLD .000015 MIN THK ON MATING SURFACES IN LOCALIZED AREA AND PLATED WITH GOLD FLASH IN CRIMP AREA,
-OR-
PLATED WITH NICKEL UNDERPLATE .000050 MIN THK ON ENTIRE CONTACT WITH GOLD FLASH OVER PALLADIUM-NICKEL .000015 MIN TOTAL THK ON MATING SURFACES IN LOCALIZED AREA AND PLATED WITH GOLD FLASH IN CRIMP AREA.
- 5 PREPLATED WITH NICKEL UNDERPLATE .000050 MIN THK ON ENTIRE CONTACT WITH GOLD .000030 MIN THK ON MATING SURFACES IN LOCALIZED AREA AND PLATED WITH GOLD FLASH IN CRIMP AREA.
- 6 OBSOLETE PARTS: OBSOLETE CIS STREAMLINING PER D.RENAUD/D.SINISI.
- 7 GOLD COVERAGE MAY OR MAY NOT BE PRESENT ON BOTTOM OF CRIMP BARREL.

6	OBSOLETE	5	485800-6
		4	485800-5
6	OBSOLETE	3	485800-3
	OBSOLETE	1	485800-2
		FNSH	PART NO

THIS DRAWING IS A CONTROLLED DOCUMENT.		DR: P. BERRY 3-21-06	Tyco Electronics Corporation	
		CHK: D. WORTHINGTON 3-24-06	Harrisburg, PA 17105-3608	
DIMENSIONS: INCHES		APP: -	CONTACT, CARD EDGE	
TOLERANCES UNLESS OTHERWISE SPECIFIED:		PRODUCT SPEC: 108-9024	APPLICATION SPEC: 114-16015	
MATERIAL: PHOS BRONZE		RIGHT: -	SIZE: A2	CAGE CODE: 00779
FINISH: SEE TABLE		DRAWING NO: 485800		RESTRICTED TO: -
		CUSTOMER DRAWING		SCALE: NTS
				SHEET: 1 of 1
				REV: AH

AMP 1471-9 REV 31MM2000

485800

A