

4

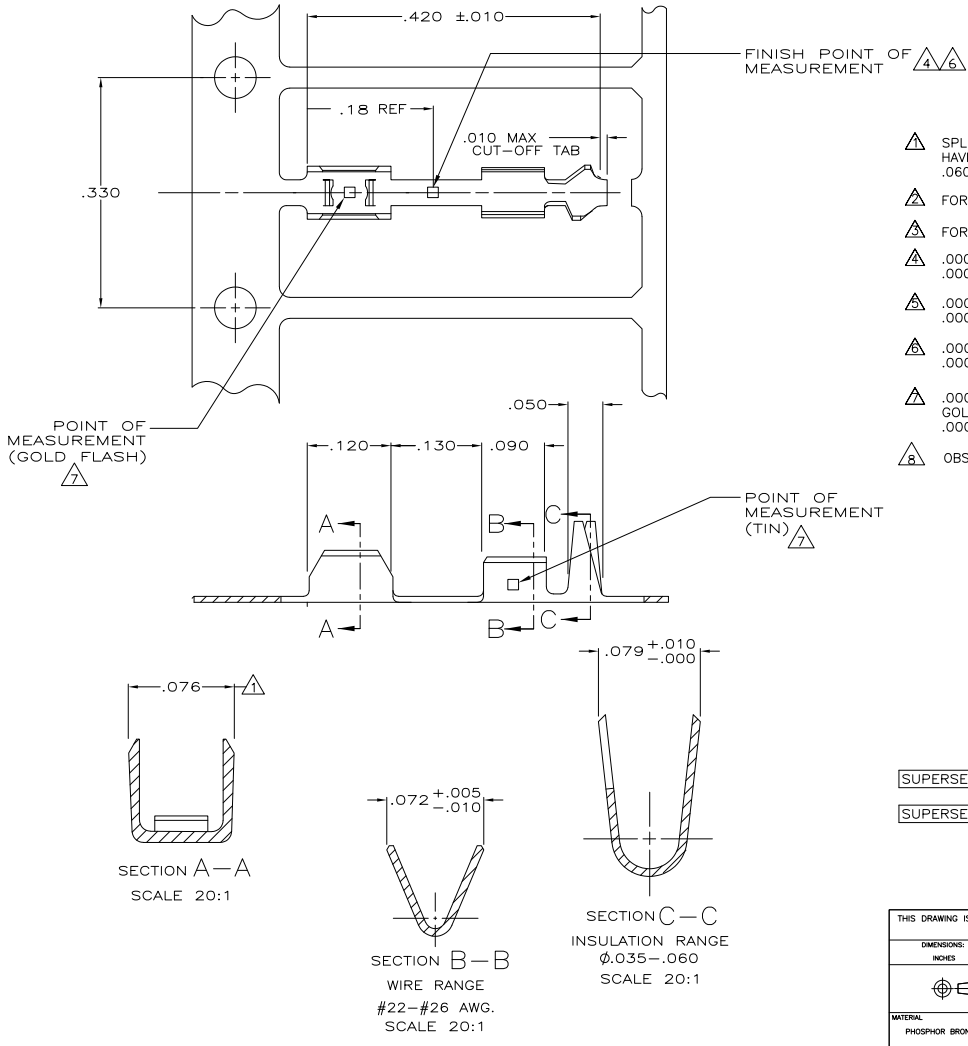
3

2

1

THIS DRAWING IS UNPUBLISHED. RELEASED FOR PUBLICATION
 © COPYRIGHT BY TYCO ELECTRONICS CORPORATION. ALL INTERNATIONAL RIGHTS RESERVED.

LOC	DIST	REVISIONS					
GP	00	P	LTR	DESCRIPTION	DATE	MIN	APD
		AD		REVISED PER ECO-08-012445	20MAY08	JDP	CWR
		AD1		REVISED PER ECO-09-020932	24AUG09	KK	AEG



- \triangle SPLICE IS DESIGNED FOR USE WITH FLEXIBLE FLAT CONDUCTOR CABLE HAVING .015 MAX THICKNESS AND .060-.065 WIDE CONDUCTORS ON .100 MIN CENTER TO CENTER SPACING.
- \triangle FOR MINI APPLICATOR (REF 567097-2)
- \triangle FOR FLEXIBLE FILM TERMINATION MACHINE (REF 768600-1)
- \triangle .00015 MIN GOLD OVER .000050 MIN NICKEL.
- \triangle .000100 MIN BRIGHT TIN-LEAD OVER .000050 MIN NICKEL.
- \triangle .000040 MIN SILVER OVER .000050 MIN NICKEL.
- \triangle .000100 MIN TIN IN WIRE BARREL, GOLD FLASH IN FFC BARREL, BOTH OVER .000050 MIN NICKEL.
- \triangle OBSOLETE PARTS: OBSOLETE CIS STREAMLINING PER D.RENAUD/D.SINISI

-	\triangle	\triangle	86773-8
-	\triangle	\triangle	86773-7
SUPERSEDED BY 86773-7	\triangle	\triangle	86773-6
\triangle OBSOLETE	\triangle	\triangle	86773-5
SUPERSEDED BY 86773-8	\triangle	\triangle	86773-4
-	\triangle	\triangle	86773-3
86774-1	\triangle	\triangle	86773-2
-	\triangle	\triangle	86773-2
LOOSE PIECE PART NUMBER	FINISH	PART NUMBER	

THIS DRAWING IS A CONTROLLED DOCUMENT.		DESIGNED BY: K. HELM 12-14-08 CHECKED BY: K. ROCKER 2-17-09 DRAWN BY: S.D. MILLER 2-17-09 PRODUCT SPEC: 108-9024 APPLICATION SPEC: 114-16002_03 WEIGHT: - FINISH: SEE TABLE	Tyco Electronics Corporation Harrisburg, PA 17105-3608 SPLICE CONTACT, STANDARD CRIMP FLAT CABLE TO ROUND WIRE #26-22 AWG	SIZE: A2 CASE CODE: 00779 DRAWING NO: C-86773	RESTRICTED TO: - SCALE: 10:1 SHEET: 1 of 1 REV: AD1
--	--	---	---	---	--