

4

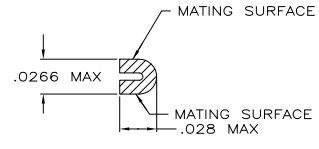
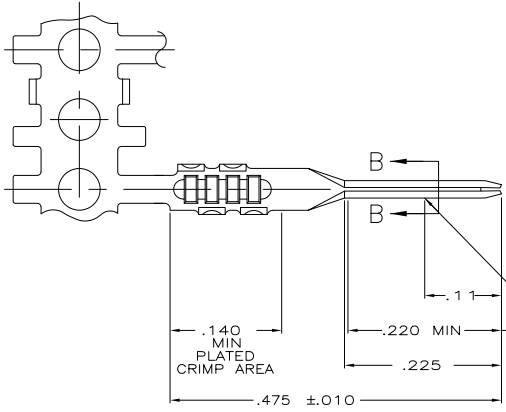
3

2

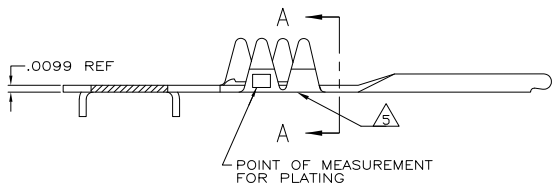
1

THIS DRAWING IS UNPUBLISHED. RELEASED FOR PUBLICATION. ALL RIGHTS RESERVED.

LOC		DST		REVISIONS			
P	LR	DESCRIPTION	DATE	MIN	APD		
GP	00						
	P1	REVISED PER ECO-11-004835	11MAR11			RK	HMR



SECTION B-B



SECTION A-A

- 1 NICKEL UNDERPLATE .000050 MIN THK ON ENTIRE CONTACT WITH GOLD .000015 THK ON LOCALIZED PLATE AREA AND BRIGHT TIN-LEAD .000100 MIN THK IN CRIMP AREA
- 2 BRIGHT TIN-LEAD .000100 MIN THK OVER NICKEL UNDERPLATE .000050 MIN THK ON ENTIRE CONTACT
- 3 GOLD FLASH IN PLATED CRIMP AREA, .00015 MIN GOLD ON LOCALIZED PLATE AREA, BOTH OVER .000050 MIN NICKEL ON ENTIRE CONTACT, -OR- GOLD FLASH OVER PALLADIUM-NICKEL, .000015 MIN TOTAL THK ON LOCALIZED PLATE AREA AND GOLD FLASH ON PLATED CRIMP AREA, BOTH OVER .000050 MIN NICKEL ON ENTIRE CONTACT.
- 4 GOLD FLASH IN PLATED CRIMP AREA, .00100 MIN TIN IN LOCALIZED PLATE AREA, BOTH OVER .000050 MIN NICKEL ON ENTIRE CONTACT.
- 5 GOLD PLATING MAY OR MAY NOT BE PRESENT ON THE BOTTOM OF THE CRIMP BARREL.

5	3	88976-5
5	4	88976-4
SUPERSEDED BY 88976-5		1
		88976-3
		88976-2
FINISH		PART NO

THIS DRAWING IS A CONTROLLED DOCUMENT.		DR: P. BERRY 3-21-06	TE Connectivity	
DIMENSIONS: INCHES		CHK: D. WORTHINGTON 3-24-06	CONTACT, FFC .100CL, .025 SQ PIN	
MATERIAL: PHOS BRONZE		APP: R. SMITH 3-25-06	SIZE: A2	
FINISH: SEE TABLE		PRODUCT SPEC: 108-9024	CAGE CODE: 00779	
		APPLICATION SPEC: 114-16015	DRAWING NO: C-88976	
		RIGHT: -	RESTRICTED TO: -	
		CUSTOMER DRAWING	SCALE: NTS SHEET: 1 of 1 REV: P1	