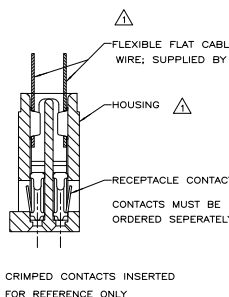
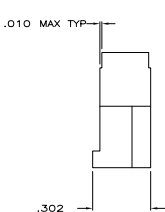
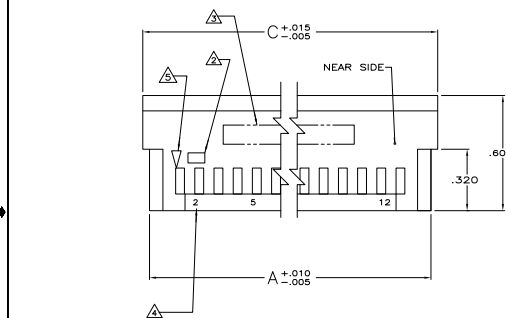
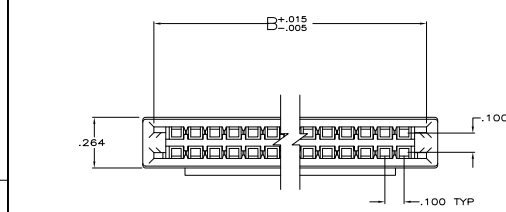


DRAWING MADE IN THIRD ANGLE PROJECTION
 THIS DRAWING IS UNPUBLISHED. RELEASED FOR PUBLICATION
 © COPYRIGHT 19 BY AMP INCORPORATED. ALL INTERNATIONAL RIGHTS RESERVED.

REV	DATE	DESCRIPTION	DATE	APPD
J		REV&REDRAWN ECN 2275		
K		REACHDATE 3-1 PER ECN BD3808	4-3-96	ODM
L		REV PER ECN BD4149	6-15-96	
M		REV PER ECN BD6679	11/11/96	ODM
N		OBsolete -38 PER ECN 0020-0943-93	11/11/96	DK
P		SUPSD -4,-6,-8,-16,-18,-24,-26,-28,-30,-32,-34,-36 PER ECN 0020-0700-94		DK
R		Obs -2,-10,-14 PER ECN 0020-0680-94		DK
H		REVISED PER ECN-09-020774		AGC

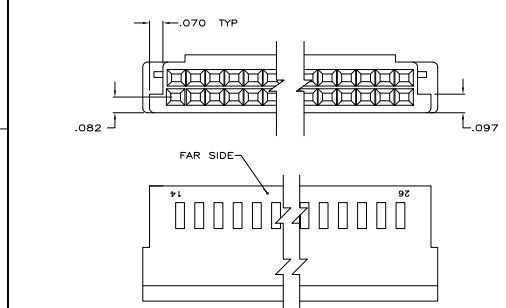


- △ HOUSING WILL ACCOMMODATE FLEXIBLE FLAT CABLE .050 OR .062 WIDE CONDUCTORS ON .100 CENTERS AND/OR #22-32 AWG WIRE WITH INSULATION RANGE OF .025 TO .056
- △ AMP TRADEMARK MOLDED IN THIS AREA
- △ PART NO. AND DATE CODE INK STAMPED, WHITE.
- △ CONTACT POSITION NOS. INK STAMPED, WHITE, BOTH SIDES (SEE TABLE)
- △ INDICATES POSITION 1
- △ PART NO. SUPERSEDED BY AS MOLDED PART NO.
- △ OBSOLETE PART NO.

PART NUMBER	SUPERSEDED BY
86673-4	88179-6
86673-6	88179-5
86673-8	2-88179-2
1-86673-6	2-88179-4
1-86673-4	1-88179-4
2-86673-4	3-88179-0
2-86673-6	2-88179-0
2-86673-8	1-88179-2
3-86673-0	3-88179-2
3-86673-2	88179-4
3-86673-4	3-88179-4
3-86673-6	3-88179-6

△ OBSOLETE PARTS: OBSOLETE CIS STREAMLINING PER D.RENAUD/D.SINISI

INK STAMPED PART NO.	NEAR SIDE	FAR SIDE	C	B	A	NO OF POSN	AS MOLDED PART NO.
3-86673-7	2,5,10	1,2,15,22	1,350	1,234	1,280	22	3-86673-8
3-86673-5	2,5,10,16	18,25,30,34	1,950	1,634	1,880	34	3-86673-6
3-86673-3	2,5	7,12	850	734	780	12	3-86673-4
3-86673-1	2,5,10,15,20,25,29	31,35,40,45,50,55,60	3,250	3,134	3,180	60	3-86673-2
2-86673-9	2	4,6	550	434	480	6	1-86673-0
2-86673-7	2,5,10,15,20,24	26,30,35,40,45,50	2,750	2,634	2,680	50	2-86673-8
2-86673-5	2,5,10,17	19,25,30,36	2,050	1,934	1,980	36	2-86673-6
2-86673-3	2,4	6,10	750	634	680	10	2-86673-4
2-86673-1	2,5,10,13	15,20,25,28	1,650	1,534	1,580	28	2-86673-2
1-86673-9	2,5,12	14,20,26	1,550	1,434	1,480	26	2-86673-0
1-86673-5	2,5,10,15,21	23,30,35,40,44	2,450	2,334	2,380	44	1-86673-6
1-86673-3	2,5,10,15,20,25,28	30,35,40,45,50,55,58	3,150	3,034	3,080	58	1-86673-4
1-86673-1	2,5,8	10,15,18	1,150	1,034	1,080	18	1-86673-2
86673-9	2,5,10,15,20,25,32	34,40,45,50,55,60,66	3,550	3,434	3,480	66	1-86673-0
86673-7	2,5,10,15,19	21,29,30,35,40	2,250	2,134	2,180	40	86673-8
86673-5	2,5,9	11,15,20	1,250	1,134	1,180	20	86673-6
86673-3	2,5,10,15,18	20,25,30,35,38	2,150	2,034	2,080	38	86673-4
86673-1	2,5,10,15,20,25,30,34	36,40,45,50,55,60,65,70	3,750	3,634	3,680	70	86673-2



DO NOT SCALE PRINT. UNLESS SPECIFIED DIMENSIONS IN INCHES TOLERANCES: .010 2 PLG DEC 8 005 INCHES 2	DR 2/16/88 G. GALLUCCI	AMP INCORPORATED Mortgage, Pa. 17105
CHK 3-3-88 G.D. MILLER	NAME HOUSING, RCPT, DBL ROW.	
APPD 3-3-88 W. HANER	SIZE .100, FFC	
MATERIAL NYLON, GLASS FILLED COLOR: BLACK	PRODUCT SPEC -	
FINISH -	APPLICATION SPEC -	
WEIGHT -	SCALE 4:1	
	FRGM NO D0779	DRAWING NO 86673
		SHEET 1 OF 1

CUSTOMER DRAWING