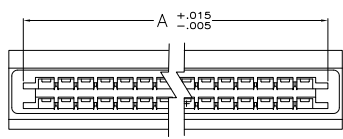
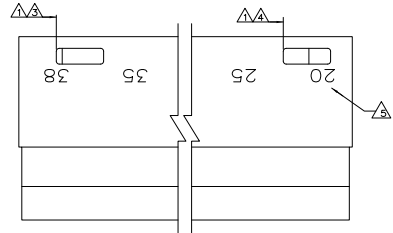
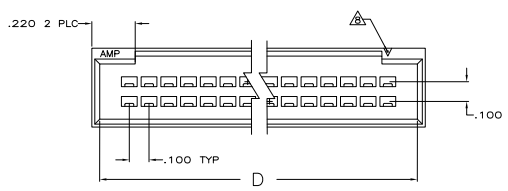
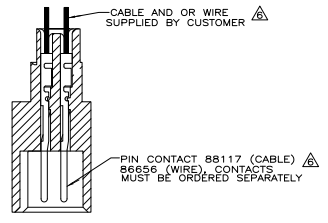
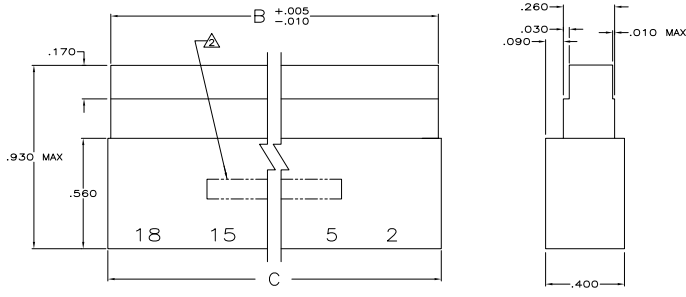


REV	DATE	DESCRIPTION	BY	CHK	APP
00					
A2		REVISED PER EDD-11-004835			11MM11 RK HMR



- △ DETENT SLOTS 6,10,12,16 & 18 POSN ONE SLOT LOCATED AS FOLLOWS:  
 6 POSN CENTERLINE OF FIRST CIRCUIT FROM LEFT  
 10 AND 12 POSN CENTERLINE ON SECOND CIRCUIT FROM LEFT  
 16 POSN CENTERLINE OF THIRD CIRCUIT FROM LEFT  
 18 POSN CENTERLINE OF FOURTH CIRCUIT FROM LEFT
- △ 20 POSN AND GREATER TWO DETENT SLOTS LOCATED AS SHOWN
- △ PART NO. AND DATE CODE INK STAMPED, WHITE.
- △ CENTERLINE OF FIRST CAVITY FROM LEFT
- △ CENTERLINE OF THIRD CAVITY FROM RIGHT
- △ CAVITY IDENT'S INK STAMPED (WHITE), IN AREA SHOWN (SEE TABLE)
- △ HOUSING WILL ACCOMMODATE FLEXIBLE FLAT CABLE .050 OR .062 WIDE CONDUCTORS ON .100 CENTERS (CABLE=.015 MAX THK) AND #22-#24 AWG WIRE WITH INSULATION RANGE OF .061 TO .069 DIA
- △ 7 THIS HOUSING IS DESIGNED TO MATE WITH FFC RECEPTACLE HOUSING AND AMP LATCH RECEPTACLE HOUSING
- △ INDICATES POSITION 1, MAY BE RECESSED OR RAISED.
- △ OBSOLETE PART NUMBER
- △ SUPERSEDED BY AS MOLDED PART NUMBER.
- △ GLASS-FILLED NYLON, BLACK, UL V-0.
- △ OBSOLETE PARTS: OBSOLETE CIS STREAMLINING PER D.RENAUD/D.SINISI

△	3-88189-7	2,6	8,10,14	.900	.980	.950	.934	14	△	3-88189-8
△	3-88189-5	2,5,10,16	18,25,30,34	1.900	1.980	1.950	1.834	34	△	3-88189-6
△	3-88189-3	2,5	7,10,12	.800	.880	.850	.734	12	△	3-88189-4
△	3-88189-1	2	4,6	.500	.580	.550	.434	6	△	3-88189-2
△	2-88189-9	2,4	6,10	.700	.780	.750	.634	10	△	2-88189-0
△	2-88189-7	2,5,10,15,20,25,30,34	36,40,45,50,55,60,65,70	3.700	3.780	3.750	3.634	70	△	2-88189-8
△	2-88189-5	2,5,10,15,20,25,32	34,40,45,50,55,60,66	3.500	3.580	3.550	3.434	66	△	2-88189-6
△	2-88189-3	2,5,10,15,20,25,29	31,35,40,45,50,55,60	3.200	3.280	3.250	3.134	60	△	2-88189-4
△	2-88189-1	2,5,10,15,20,25,28	30,35,40,45,50,55,58	3.100	3.180	3.150	3.034	58	△	2-88189-2
△	1-88189-9	2,5,10,15,20,24	26,30,35,40,45,50	2.700	2.780	2.750	2.634	50	△	2-88189-0
△	1-88189-7	2,5,10,15,21	23,25,30,35,40,44	2.400	2.480	2.450	2.334	44	△	1-88189-8
△	1-88189-5	2,5,10,15,19	21,25,30,35,40	2.200	2.280	2.250	2.134	40	△	1-88189-6
△	1-88189-3	2,5,10,17	19,25,30,36	2.000	2.080	2.050	1.934	36	△	1-88189-4
△	1-88189-1	2,5,10,13	15,20,25,28	1.600	1.680	1.650	1.534	28	△	1-88189-0
△	88189-9	2,5,12	14,20,26	1.500	1.580	1.550	1.434	26	△	1-88189-0
△	88189-7	2,5,11	13,20,24	1.400	1.480	1.450	1.334	24	△	88189-8
△	88189-5	2,5,9	11,15,20	1.200	1.280	1.250	1.134	20	△	88189-6
△	88189-3	2,5,8	10,15,18	1.100	1.180	1.150	1.034	18	△	88189-4
△	88189-1	2,5,10,15,18	20,25,30,35,38	2.100	2.180	2.150	2.034	38	△	88189-0

IN K STAMPED PART NO. NEAR SIDE FAR SIDE

△ CAVITY POSN. NO. STAMPED

THIS DRAWING IS A CONTROLLED DOCUMENT. DATE: 2-21-98

DESIGNED BY: L. BOEKER

PROJECT FILE: H0500000

DATE: 11/11/98

SIZE: 4.1

DATE: 11/11/98

DRAWING NO: 00779

REV: 0

CUSTOMER DRAWING

TE Connectivity

HOUSING, PIN, DEL, ROW, W/DETENT SLOTS, .100

00779

88189

REVISED PER EDD-11-004835