

4

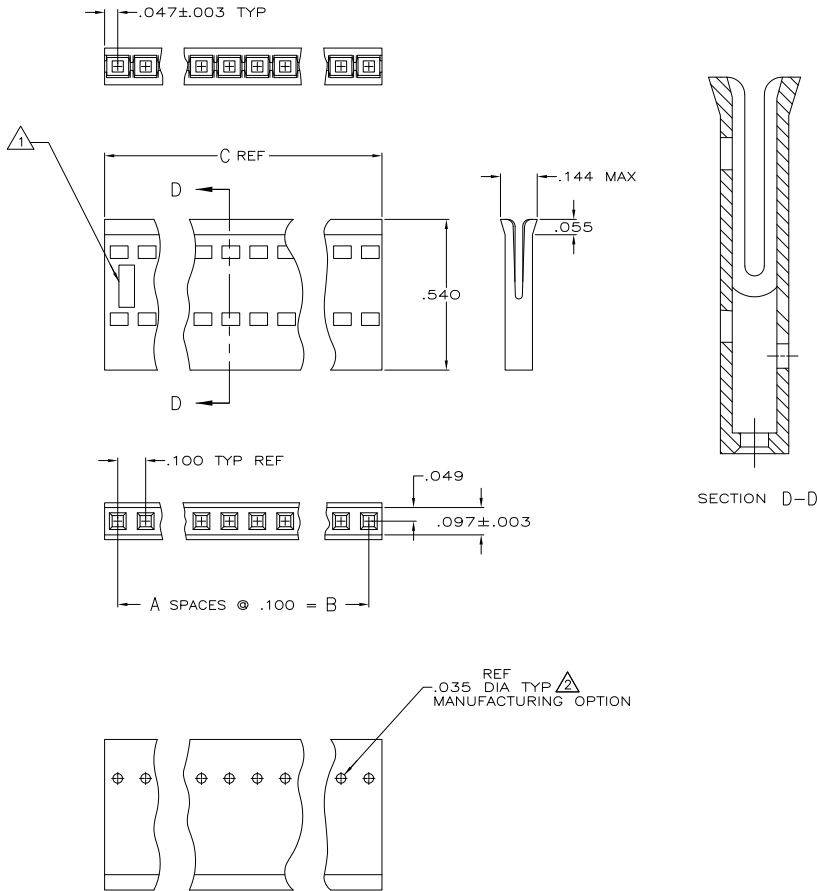
3

2

1

THIS DRAWING IS UNPUBLISHED. RELEASED FOR PUBLICATION. ALL RIGHTS RESERVED.

LOC	DIST	REVISIONS			
P	LTR	DESCRIPTION	DATE	BY	APPD
GP	00				
	U2	REVISED PER ECO-11-005033	23MAR11	RK	HMR



- \triangle AMP TRADEMARK AND MOLD CAVITY IDENTIFICATION LOCATED AT EITHER END OF THE HOUSING IN APPROXIMATE LOCATION SHOWN.
- \triangle THIS HOLE IS FOR MOLDING PURPOSES ONLY AND MAY BE FLASHED OVER.
- \triangle OBSOLETE PARTS: OBSOLETE CIS STREAMLINING PER D.RENAUD/D.SINISI

OBsolete	2.594	2.500	25	26	2-487378-6
OBsolete	3.394	3.300	33	34	2-487378-5
\triangle OBsolete	2.494	2.400	24	25	2-487378-4
	2.394	2.300	23	24	2-487378-3
\triangle OBsolete	2.294	2.200	22	23	2-487378-2
	2.194	2.100	21	22	2-487378-1
	2.094	2.000	20	21	2-487378-0
	1.994	1.900	19	20	1-487378-9
	1.894	1.800	18	19	1-487378-8
	1.794	1.700	17	18	1-487378-7
	1.694	1.600	16	17	1-487378-6
	1.594	1.500	15	16	1-487378-5
	1.494	1.400	14	15	1-487378-4
	1.394	1.300	13	14	1-487378-3
	1.294	1.200	12	13	1-487378-2
	1.194	1.100	11	12	1-487378-1
	1.094	1.000	10	11	1-487378-0
	.994	.900	9	10	487378-9
	.894	.800	8	9	487378-8
	.794	.700	7	8	487378-7
	.694	.600	6	7	487378-6
	.594	.500	5	6	487378-5
	.494	.400	4	5	487378-4
	.394	.300	3	4	487378-3
	.294	.200	2	3	487378-2
	.194	.100	1	2	487378-1
	C REF	B	A	NO OF POSNS	PRODUCT PART NO

THIS DRAWING IS A CONTROLLED DOCUMENT.		BY: D. DOLLYHIGH 10-17-04	TE Connectivity	
DIMENSIONS: INCHES		CHK: D.R. WORTHINGTON 10-17-04	HOUSING, RECEPTACLE, FFC	
TOLERANCES UNLESS OTHERWISE SPECIFIED:		APP: -	SIZE: A2	
0 PLC ± .010		PRODUCT SPEC: 108-9024	CASE CODE: 00779	
1 PLC ± .005		APPLICATION SPEC: 114-16015	DRAWING NO: C=487378	
2 PLC ± .003		WEIGHT: -	RESTRICTED TO: -	
3 PLC ± .002		FINISH: -	SCALE: NTS	
4 PLC ± .001		MATERIAL: THERMOPLASTIC	SHEET: 1 of 1	
ANGLES ± .5°		CUSTOMER DRAWING	REV: U2	