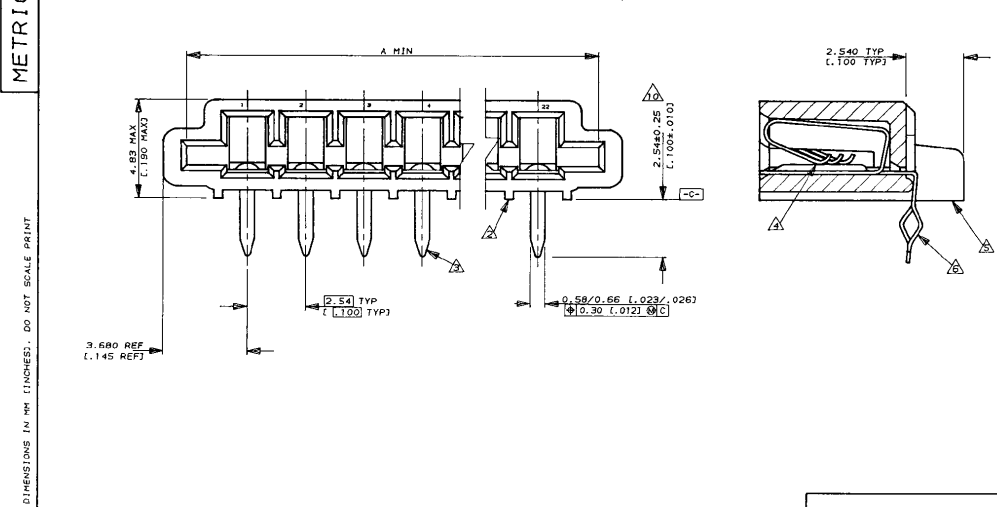


- NOTES**
- CONNECTOR WILL ACCEPT FLEXIBLE PRINTED CIRCUIT OR FLAT FLEXIBLE CABLE ON 2.54 (.100) CENTERS IN A THICKNESS RANGE OF 0.127 TO 0.381 (.005 TO .015) IN CONTACT AREA
 - STAND-OFFS PREVENT SOLVENT ENTRAPMENT
 - LEAD-IN ON PINS FOR EASE OF INSERTION INTO BOARD
 - SEQUENTIAL CONTACTS REDUCE CABLE INSERTION FORCE
 - STABILIZING WINGS MAY BE REMOVED BY CUSTOMER IF NECESSARY
 - ALTERNATING CONTACT FORM RETAINS CONNECTOR IN P.C. BOARD DURING SOLDER OPERATION
 - ACCEPTS CABLE OR CIRCUITRY WITH EXPOSED CONDUCTORS FACING TOWARD OR AWAY FROM THE BOARD SURFACE
 - REFER TO APPLICATION SPEC 114-2082
 - MATERIAL HOUSING : GLASS REINFORCED POLYESTER THERMOPLASTIC UL 94 V0 RATED, BLACK CONTACT : PHOS BRONZE
 - AREA INDICATED SHALL MEET SOLDERABILITY SPEC 109-11-1
 - PARTS PACKED IN TUBE FORM



40.46	(1.593)	38.30	(1.508)	14	2-520314-3
60.78	(2.393)	58.62	(2.308)	22	2-520314-2
58.24	(2.293)	56.08	(2.208)	21	2-520314-1
55.70	(2.193)	53.54	(2.108)	20	2-520314-0
53.16	(2.093)	51.00	(2.008)	19	1-520314-9
50.62	(1.993)	48.46	(1.908)	18	1-520314-8
48.08	(1.893)	45.92	(1.808)	17	1-520314-7
45.54	(1.793)	43.38	(1.708)	16	1-520314-6
43.00	(1.693)	40.84	(1.608)	15	1-520314-5
40.46	(1.593)	38.30	(1.508)	14	1-520314-4
37.92	(1.493)	35.76	(1.408)	13	1-520314-3
35.38	(1.393)	33.22	(1.308)	12	1-520314-2
32.84	(1.293)	30.68	(1.208)	11	1-520314-1
30.30	(1.193)	28.14	(1.108)	10	1-520314-0
27.76	(1.093)	25.60	(1.008)	9	520314-9
25.22	(.993)	23.06	(.908)	8	520314-8
22.68	(.893)	20.52	(.808)	7	520314-7
20.14	(.793)	17.98	(.708)	6	520314-6
17.60	(.693)	15.44	(.608)	5	520314-5
15.06	(.593)	12.90	(.508)	4	520314-4
12.52	(.493)	10.36	(.408)	3	520314-3
9.98	(.393)	7.82	(.308)	2	520314-2

PACKING		B	A	POS	PART NO

Copyright ©1993		Copyright ©1993 AMP MFG (S) PTE LTD. ALL RIGHTS RESERVED.		AMP AMP MANUFACTURING (S) PRIVATE LIMITED	
(WIRE RANGE)	(INSULATION DIA.)	(NAME)			
mm# (AWG -)	mm#	TRIOMATE HORIZONTAL CABLE ENTRY			
(MATERIAL)	(FINISH) CONTACTS BRIGHT TIN/LEAD PLATED	FOR 1.57 (.062) THK P.C. BOARD			
R REVISED DY/EC/07A	LWY SL 13.12.93	(GENERAL TOLERANCE)	SIZE LOC (No.)	520314	
Q REDRAWN DY/EC/07B	LWY SL 30.7.93	±.38	A31DY	REV. R	SHEET 1 OF 1
LTR (REVISION RECORD)	DR CHK DATE	(SCALE)	6:1		
	CHK. SALLY 30.7.93	APP. PETER de JONG			

(CUSTOMER DRAWING)

NUMBER 520314
 METRIC
 DIMENSIONS IN MM (INCHES). DO NOT SCALE PRINT
 PRINT DIST