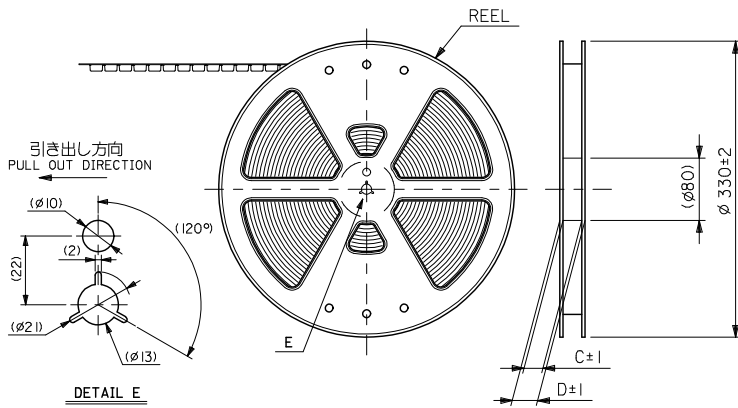
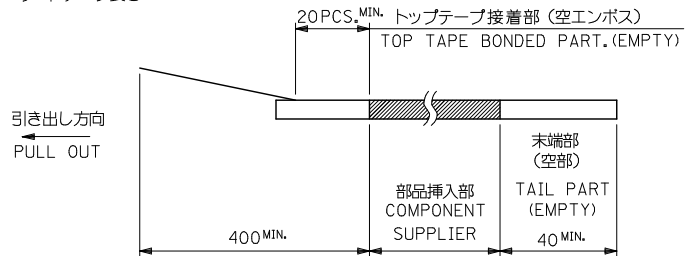


10 9 8 7 6 5 4 3 2 1



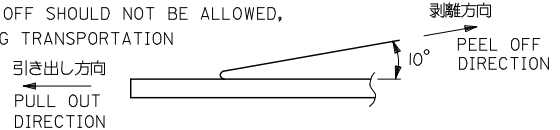
注記 NOTES

- 製品番号 52559-***19 の梱包状態はアクチュエータがロックした状態とする。
 詳細寸法については図面 SD-52559-027 を参照下さい。
 IN THE PACKAGE,ACTUATOR OF PART NO.52559-***19 SHOULD BE LOCKED RE DETAILED DIMENSIONS,SEE SD-52559-027
- 梱包数量：1000個/リール
 NUMBER OF CONNECTORS:1000PCS/REEL
- リードテープ長さ LEAD TAPE LENGTH



- トップテープの剥離強度：(剥離方向は下図参照)
 0.1~1.3N {10gf~130gf} 尚、本規格値は、出荷時に適用。
 (但し、輸送時に剥離が発生しない事。)

PEELING OFF FORCE OF TOP TAPE
 0.1~1.3N{10gf ~130gf}PEELING DIRECTION AS SHOWN IN FOLLOWING FIG.)
 THIS REQUIREMENT SHOULD BE APPLIED AT SHIPMENT
 PEEL OFF SHOULD NOT BE ALLOWED,
 DURING TRANSPORTATION



- 材料 キャリアテープ：ポリプロピレン (PP)
 トップテープ：PET, PE, PEF
 リール：ポリスチレン (PS) <リサイクル材を含む>

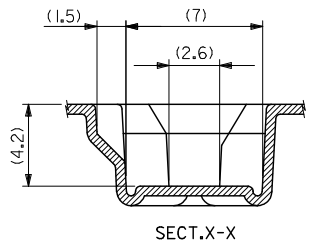
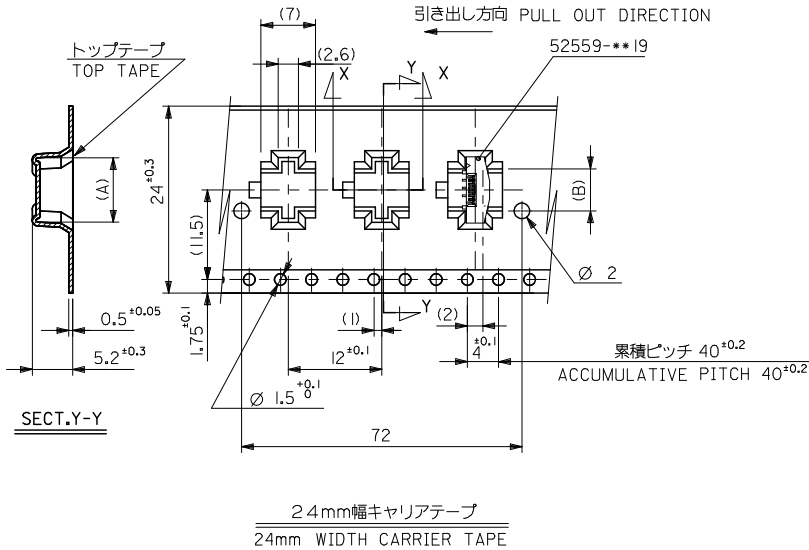
MATERIAL CARRIER TAPE:POLYPROPYLENE
 TOP TAPE:PET,PE,PEF
 REEL:POLYSTYRENE(PS)
 <RECYCLE MATERIAL CONTAINED>

- 本製品は 52559-***92の鉛フリー品である。
 THIS PRODUCT IS LEAD FREE OF 52559-***92
- 本製品は乾燥剤入り、ハイバリア梱包仕様である。
 THIS PRODUCT IS HIGH BARRIER PACKAGE WITH DESICCANT.

52559-***72
 MODEL NO.

REVISED EC NO: J2009-2061 DRAWN BY DRYUNIKON 2009/05/20 CHECKED BY CHYKHMATSUMOTO 2009/05/21 APPROVED BY APPR:NIKITA 2009/05/21	GENERAL TOLERANCES (UNLESS SPECIFIED)		DIMENSION STYLE MM ONLY		SCALE ---	DESIGN UNITS METRIC	THIRD ANGLE PROJECTION
	10 UNDER	±0.2	DRAWN BY H. SHIMABUKUR	DATE 2004/01/07	TITLE 0.5 FPC CONN ASSY ZIF SMT ST EMBSTP PKG -LEAD FREE-		
	10 OVER 30 UNDER	±0.25	CHECKED BY K. TOJO	DATE 2004/01/07	MOLEX INCORPORATED		
	30 OVER	±0.3	APPROVED BY M. SASAO	DATE 2004/01/07	MATERIAL NO. SEE SHEET 2-4	DOCUMENT NO. SD-52559-028	SHEET NO. 1 OF 4
	ANGULAR ±3°	DRAFT WHERE APPLICABLE MUST REMAIN WITHIN DIMENSIONS		THIS DRAWING CONTAINS INFORMATION THAT IS PROPRIETARY TO MOLEX INCORPORATED AND SHOULD NOT BE USED WITHOUT WRITTEN PERMISSION			

10 9 8 7 6 5 4 3 2 1



24	29.4	25.4	14.4	17.3	52559-2472	24
			13.9	16.8	52559-2372	23
			12.9	15.8	52559-2172	21
			12.4	15.3	52559-2072	20
			10.9	13.8	52559-1772	17
			10.4	13.3	52559-1672	16
			9.9	12.8	52559-1572	15
			9.4	12.3	52559-1472	14
			8.4	11.3	52559-1272	12
			7.4	10.3	52559-1072	10
			6.9	9.8	52559-0972	9
5.4	8.3	52559-0672	6			

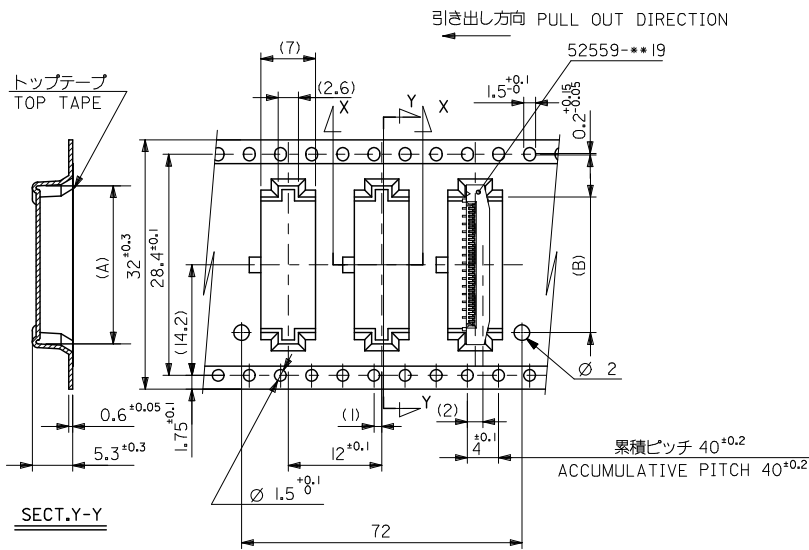
52559-**72	キャリアテープ幅	D	C	(B)	(A)	MATERIAL NO.	CIRCUIT NO.
MODEL NO.	CARRIER TAPE WIDTH						

REVISED ELC NO: J2009-2061 DRAWN BY CHYKOHMATSUNO 2009/05/21 APPR:NIKI TA 2009/05/21	GENERAL TOLERANCES (UNLESS SPECIFIED)		DIMENSION STYLE	SCALE	DESIGN UNITS	THIRD ANGLE PROJECTION	
	10 UNDER	±0.2	MM ONLY	---	METRIC		
	10 OVER 30 UNDER	±0.25	DRAWN BY	H. SHIMABUKUR	DATE		2004/01/07
	30 OVER	±0.3	CHECKED BY	K. TOJO	DATE		2004/01/07
	ANGULAR	±3 °	APPROVED BY	M. SASAO	DATE		2004/01/07
DRAFT WHERE APPLICABLE MUST REMAIN WITHIN DIMENSIONS		MATERIAL NO.	SEE TABLE	DOCUMENT NO.	SD-52559-028	SHEET NO.	
		SIZE	A3	THIS DRAWING CONTAINS INFORMATION THAT IS PROPRIETARY TO MOLEX INCORPORATED AND SHOULD NOT BE USED WITHOUT WRITTEN PERMISSION		2 OF 4	

0.5 FPC CONN ASSY ZIF
SMT ST EMBSTP PKG
-LEAD FREE-

MOLEX INCORPORATED

10 9 8 7 6 5 4 3 2 1

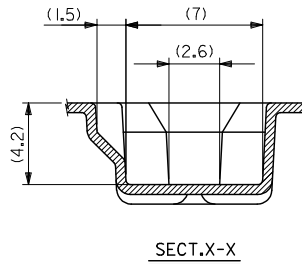
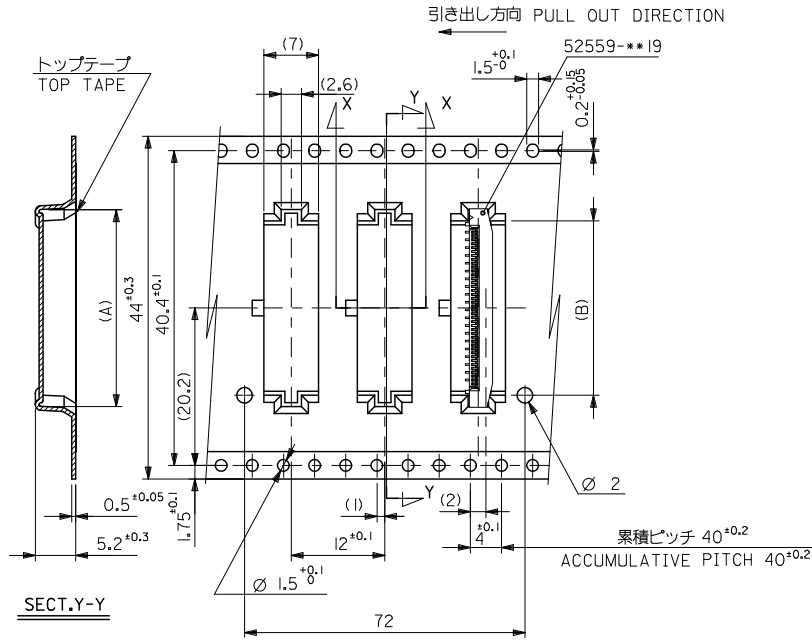


52559-**-72	キャリアテープ幅 CARRIER TAPE WIDTH	D	C	18.4	21.3	52559-3272	32		
				17.4	20.3	52559-3072	30		
				16.4	19.3	52559-2872	28		
				15.9	18.8	52559-2772	27		
				15.4	18.3	52559-2672	26		
MODEL NO.				(B)	(A)	MATERIAL NO.	CIRCUIT NO.		
GENERAL TOLERANCES (UNLESS SPECIFIED)		DIMENSION STYLE MM ONLY		SCALE ---		DESIGN UNITS METRIC		THIRD ANGLE PROJECTION	
10 UNDER	±0.2	DRAWN BY H. SHIMABUKUR		DATE 2004/01/07		TITLE 0.5 FPC CONN ASSY ZIF SMT ST EMBSTP PKG -LEAD FREE-			
10 OVER 30 UNDER	±0.25	CHECKED BY K. TOJO		DATE 2004/01/07		MOLEX INCORPORATED			
30 OVER	±0.3	APPROVED BY M. SASAO		DATE 2004/01/07					
ANGULAR ±3 °		MATERIAL NO.		DOCUMENT NO.		SHEET NO.			
DRAFT WHERE APPLICABLE MUST REMAIN WITHIN DIMENSIONS		SEE TABLE		SD-52559-028		3 OF 4			
SIZE A3		THIS DRAWING CONTAINS INFORMATION THAT IS PROPRIETARY TO MOLEX INCORPORATED AND SHOULD NOT BE USED WITHOUT WRITTEN PERMISSION							

ib_frame_A3_J_ME_S
Rev. E 2006/04/15

EN-02JA(021)

10 9 8 7 6 5 4 3 2 1



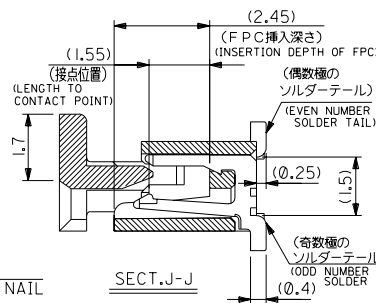
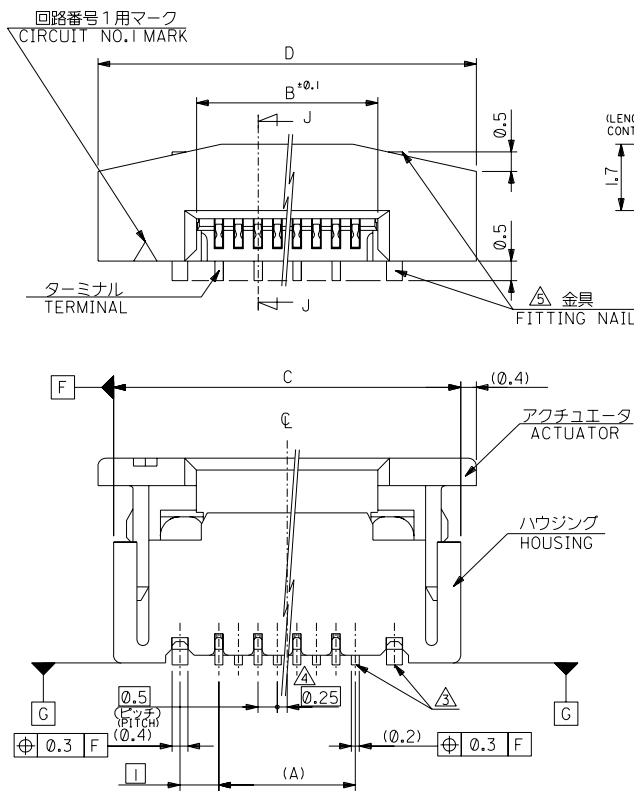
44mm幅キャリアテープ
44mm WIDTH CARRIER TAPE

52559-***72	44	49.4	45.4	22.4	25.3	52559-4072	40
MODEL NO.	キャリアテープ幅 CARRIER TAPE WIDTH	D	C	(B)	(A)	MATERIAL NO.	CIRCUIT NO.
GENERAL TOLERANCES (UNLESS SPECIFIED)		DIMENSION STYLE MM ONLY		SCALE ---		DESIGN UNITS METRIC	
10 UNDER ±0.2		DRAWN BY H. SHIMABUKUR		DATE 2004/01/07		TITLE 0.5 FPC CONN ASSY ZIF SMT ST EMBSTP PKG -LEAD FREE-	
10 OVER 30 UNDER ±0.25		CHECKED BY K. TOJO		DATE 2004/01/07		MOLEX INCORPORATED	
30 OVER ±0.3		APPROVED BY M. SASAO		DATE 2004/01/07			
ANGULAR ±3°		MATERIAL NO. SEE TABLE		DOCUMENT NO. SD-52559-028		SHEET NO. 4 OF 4	
DRAFT WHERE APPLICABLE MUST REMAIN WITHIN DIMENSIONS		THIS DRAWING CONTAINS INFORMATION THAT IS PROPRIETARY TO MOLEX INCORPORATED AND SHOULD NOT BE USED WITHOUT WRITTEN PERMISSION					

ib_frame_A3_J_ME_S
Rev. E 2006/04/15

9 8 7 6 5 4 3 2 1 EN-02JA(021)

DWG. NO. SD-52559-045



注記 NOTES

- I. 使用材料: MATERIAL
- ハウジング HOUSING : 46NYLON UL94V-0
 - アクチュエータ ACTUATOR : PPS UL94V-0
 - ターミナル TERMINAL : リン青銅 (t=0.2) PHOS-BRO
 - 金具 FITTING NAIL : 銅ビスマスマック 1.0マイクromメートル以上 TIN-BISMUTH 1.0 MICROMETER MINIMUM
 - ニッケル下地 1.0マイクromメートル以上 NICKEL(UNDER PLATING) 1.0 MICROMETER MINIMUM
 - リン青銅 (t=0.4)
 - 銅メッキ 1.0マイクromメートル以上 TIN 1.0 MICROMETER MINIMUM
 - ニッケル下地 1.0マイクromメートル以上 NICKEL(UNDER PLATING) 1.0 MICROMETER MINIMUM
2. エンボステップ梱包時は、アクチュエータがロックした状態とする。
IN THE PACKAGE, ACTUATOR OF PART NO.52559-***9 SHOULD BE LOCKED.
- △ ソルダータール半田付け面のズレ量、及び金具半田付け面のズレ量は、基準面 [G] に対し上方向 0.05 MAX.、下方向 0.15 MAX.とする。
MISALIGNMENT OF SOLDER TAILS AND FITTING NAILS FROM [G] UPPER DIRECTION: 0.05 MAX. . LOWER DIRECTION: 0.15 MAX.
- △ 偶数種に適用。
APPLY FOR EVEN CIRCUIT.
- △ パターンはくり止め用金具。
FITTING NAIL FOR PREVENTION OF PEELING OF P.C.B. PATTERN.
- △ RO. 3は、FPCの導体部にかからないこと。
RO.3 MUST NOT BE OVERLAPPED TO PATTERN OF FPC.
7. 本製品は 52559-***17 の鉛フリー品である。
THIS PRODUCT IS LEAD FREE OF 52559-***17

DO NOT SCALE DRAWING		REVISED		RELEASED		MATERIAL 材料		GENERAL TOLERANCES: (UNLESS SPECIFIED) 一般公差		SCALE		DESIGN UNITS		DIMENSIONS: 寸法		MODEL NO. 52559-***19	
E81NO. J2004-3551		E83NO. J2004-3551		E82NO. J2004-1818		FINISH 仕上げ		10 UNDER 未満		DRAWN BY & DATE H.SHIMABUKURO '04/01/07		mm		mm		SHT REV	
DRWN: H. KAWABATA		DRWN: H. KAWABATA		DRWN: H. SHIMABUKURO		WIRE RANGE 適用電線範囲		10 OVER 以上 30 UNDER 未満		CHECKED BY & DATE K.TOJO '04/01/07		INCH		INCH		2 REVISE ON CAD ONLY	
CHK: K. TOJO		CHK: K. TOJO		CHK: H. SAEKI		INS. RANGE 被覆外径		30 OVER 以上		APPROVED BY & DATE H. SAEKI '04/01/07		mm ONLY		mm ONLY		TITLE: 0.5 FPC Conn. Assy ZIF. -LEAD FREE-	
APPR: H. SAEKI		APPR: H. SAEKI		APPR: H. SAEKI		REV DESCRIPTION		ANGLE 角度		CAD FILENAME SD-52559-045.S01		MOLEX INCORPORATED		MATERIAL NO. SEE CHART		DRAWING NO. SD-52559-045	
A		0						+0.2								SHEET NO. 1 OF 2	
8		7		6		5		+0.25								SIZE B	
								+0.3								EN-02J(097) MXJ-54	

DWG. NO. SD-52559-045

F

D

V

C

B

DO NOT SCALE DRAWING

8 7 6 5 4 3 2 1

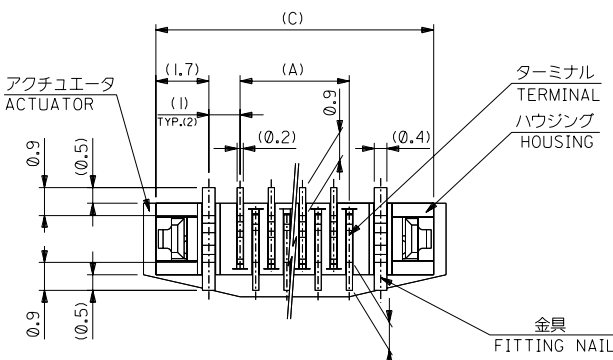
F

E

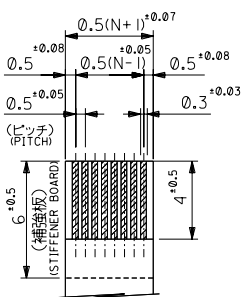
D

C

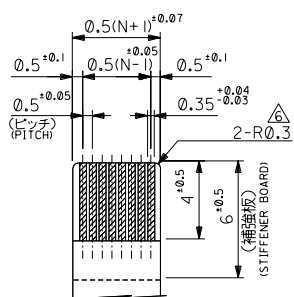
B



下面図
BOTTOM VIEW



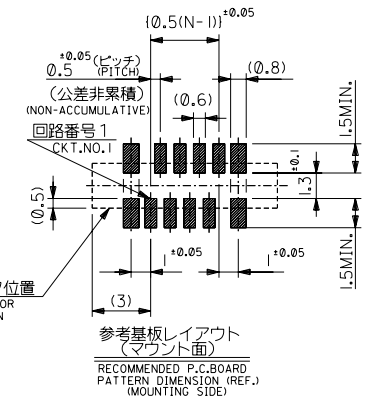
適合 FPC 推奨寸法
APPLICABLE FPC
RECOMMENDED DIMENSION.
(仕上がり厚さ: 0.3±0.05)
(THICKNESS: 0.3±0.05)



適合 FPC 推奨寸法
APPLICABLE FPC
RECOMMENDED DIMENSION.
(仕上がり厚さ: 0.3±0.05)
(THICKNESS: 0.3±0.05)

FPCについて:
打抜き方向は導体側から補強板側を推奨致します。
補強フィルム材質はポリイミドを推奨致します。
接着剤は熱硬化接着剤を推奨致します。

ABOUT FPC:
RECOMMENDED PUNCHER DIRECTION: FROM CONDUCTOR SIDE TO STIFFENER BOARD SIDE.
RECOMMENDED MATERIAL:
STIFFENER FILM: POLYIMIDE
BONDING AGENT: THERMOSETTING BONDING AGENT



25.7	24.9	20.65	19.5	52559-40	19	40
23.7	22.9	18.65	17.5		-36	36
22.2	21.4	17.15	16.0		-33	33
21.7	20.9	16.65	15.5		-32	32
21.2	20.4	16.15	15.0		-31	31
20.7	19.9	15.65	14.5		-30	30
20.2	19.4	15.15	14.0		-29	29
19.7	18.9	14.65	13.5		-28	28
19.2	18.4	14.15	13.0		-27	27
18.7	17.9	13.65	12.5		-26	26
18.2	17.4	13.15	12.0		-25	25
17.7	16.9	12.65	11.5		-24	24
17.2	16.4	12.15	11.0		-23	23
16.7	15.9	11.65	10.5		-22	22
16.2	15.4	11.15	10.0		-21	21
15.7	14.9	10.65	9.5		-20	20
15.2	14.4	10.15	9.0		-19	19
14.7	13.9	9.65	8.5		-18	18
14.2	13.4	9.15	8.0		-17	17
13.7	12.9	8.65	7.5		-16	16
13.2	12.4	8.15	7.0		-15	15
12.7	11.9	7.65	6.5		-14	14
12.2	11.4	7.15	6.0		-13	13
11.7	10.9	6.65	5.5		-12	12
11.2	10.4	6.15	5.0		-11	11
10.7	9.9	5.65	4.5		-10	10
10.2	9.4	5.15	4.0		-09	9
9.7	8.9	4.65	3.5		-08	8
8.7	7.9	3.65	2.5	52559-06	19	6
D	C	B	(A)	MATERIAL NO.	種数	種数

8 EEBNO. DRWN: CHK: APPR:		7 EEBNO. DRWN: CHK: APPR:		6 EEBNO. DRWN: CHK: APPR:		5 EEBNO. DRWN: CHK: APPR:		4 EEBNO. DRWN: CHK: APPR:		3 EEBNO. DRWN: CHK: APPR:		2 EEBNO. DRWN: CHK: APPR:		1 EEBNO. DRWN: CHK: APPR:			
REVISED		REVISED		REVISED		REVISED		REVISED		REVISED		REVISED		REVISED			
EEBNO. J2004-3551 DRWN: HAKABATA CHK: K. TOJO APPR: H. SALAB		EEBNO. J2004-1818 DRWN: HSHIMABUKURO CHK: K. TOJO APPR: H. SALAB		EEBNO. J2004-1818 DRWN: HSHIMABUKURO CHK: K. TOJO APPR: H. SALAB		EEBNO. J2004-1818 DRWN: HSHIMABUKURO CHK: K. TOJO APPR: H. SALAB		EEBNO. J2004-1818 DRWN: HSHIMABUKURO CHK: K. TOJO APPR: H. SALAB		EEBNO. J2004-1818 DRWN: HSHIMABUKURO CHK: K. TOJO APPR: H. SALAB		EEBNO. J2004-1818 DRWN: HSHIMABUKURO CHK: K. TOJO APPR: H. SALAB		EEBNO. J2004-1818 DRWN: HSHIMABUKURO CHK: K. TOJO APPR: H. SALAB		EEBNO. J2004-1818 DRWN: HSHIMABUKURO CHK: K. TOJO APPR: H. SALAB	
MATERIAL		MATERIAL		MATERIAL		MATERIAL		MATERIAL		MATERIAL		MATERIAL		MATERIAL			
SEE NOTES		SEE NOTES		SEE NOTES		SEE NOTES		SEE NOTES		SEE NOTES		SEE NOTES		SEE NOTES			
FINISH		FINISH		FINISH		FINISH		FINISH		FINISH		FINISH		FINISH			
WIRE RANGE		WIRE RANGE		WIRE RANGE		WIRE RANGE		WIRE RANGE		WIRE RANGE		WIRE RANGE		WIRE RANGE			
INS. RANGE		INS. RANGE		INS. RANGE		INS. RANGE		INS. RANGE		INS. RANGE		INS. RANGE		INS. RANGE			
GENERAL TOLERANCES:		GENERAL TOLERANCES:		GENERAL TOLERANCES:		GENERAL TOLERANCES:		GENERAL TOLERANCES:		GENERAL TOLERANCES:		GENERAL TOLERANCES:		GENERAL TOLERANCES:			
UNLESS SPECIFIED:		UNLESS SPECIFIED:		UNLESS SPECIFIED:		UNLESS SPECIFIED:		UNLESS SPECIFIED:		UNLESS SPECIFIED:		UNLESS SPECIFIED:		UNLESS SPECIFIED:			
10 UNDER		10 UNDER		10 UNDER		10 UNDER		10 UNDER		10 UNDER		10 UNDER		10 UNDER			
30 OVER		30 OVER		30 OVER		30 OVER		30 OVER		30 OVER		30 OVER		30 OVER			
30 OVER		30 OVER		30 OVER		30 OVER		30 OVER		30 OVER		30 OVER		30 OVER			
ANGLE		ANGLE		ANGLE		ANGLE		ANGLE		ANGLE		ANGLE		ANGLE			
SCALE		SCALE		SCALE		SCALE		SCALE		SCALE		SCALE		SCALE			
DESIGN UNITS		DESIGN UNITS		DESIGN UNITS		DESIGN UNITS		DESIGN UNITS		DESIGN UNITS		DESIGN UNITS		DESIGN UNITS			
DRAWN BY & DATE		DRAWN BY & DATE		DRAWN BY & DATE		DRAWN BY & DATE		DRAWN BY & DATE		DRAWN BY & DATE		DRAWN BY & DATE		DRAWN BY & DATE			
CHECKED BY & DATE		CHECKED BY & DATE		CHECKED BY & DATE		CHECKED BY & DATE		CHECKED BY & DATE		CHECKED BY & DATE		CHECKED BY & DATE		CHECKED BY & DATE			
APPROVED BY & DATE		APPROVED BY & DATE		APPROVED BY & DATE		APPROVED BY & DATE		APPROVED BY & DATE		APPROVED BY & DATE		APPROVED BY & DATE		APPROVED BY & DATE			
CAD FILENAME		CAD FILENAME		CAD FILENAME		CAD FILENAME		CAD FILENAME		CAD FILENAME		CAD FILENAME		CAD FILENAME			
MATERIAL NO.		MATERIAL NO.		MATERIAL NO.		MATERIAL NO.		MATERIAL NO.		MATERIAL NO.		MATERIAL NO.		MATERIAL NO.			
DRAWING NO.		DRAWING NO.		DRAWING NO.		DRAWING NO.		DRAWING NO.		DRAWING NO.		DRAWING NO.		DRAWING NO.			
SHEET NO.		SHEET NO.		SHEET NO.		SHEET NO.		SHEET NO.		SHEET NO.		SHEET NO.		SHEET NO.			
SIZE		SIZE		SIZE		SIZE		SIZE		SIZE		SIZE		SIZE			

EN-02J(097) MXJ-54