

33.8	31.05	29	52793-3010	30
32.8	30.05	28	-2910	29
31.8	29.05	27	-2810	28
30.8	28.05	26	-2710	27
29.8	27.05	25	-2610	26
28.8	26.05	24	-2510	25
27.8	25.05	23	-2410	24
26.8	24.05	22	-2310	23
25.8	23.05	21	-2210	22
24.8	22.05	20	-2110	21
23.8	21.05	19	-2010	20
22.8	20.05	18	-1910	19
21.8	19.05	17	-1810	18
20.8	18.05	16	-1710	17
19.8	17.05	15	-1610	16
18.8	16.05	14	-1510	15
17.8	15.05	13	-1410	14
16.8	14.05	12	-1310	13
15.8	13.05	11	-1210	12
14.8	12.05	10	-1110	11
13.8	11.05	9	-1010	10
12.8	10.05	8	-0910	9
11.8	9.05	7	-0810	8
10.8	8.05	6	-0710	7
9.8	7.05	5	-0610	6
8.8	6.05	4	-0510	5
7.8	5.05	3	-0410	4
6.8	4.05	2	52793-0310	3
C	B	A	ENG. NO	極数 CIRCUIT

注記 NOTES:

1. 使用材料 MATERIAL
 - ハウジング: PPS, UL94V-0
 - ターミナル: リン青銅 (±0.25)
 - メッキ: 銅下地半田メッキ
 - 金具: リン青銅 (±0.25)
 - メッキ: 銅下地半田メッキ
2. HOUSING: PPS, UL94V-0
 TERMINAL: PHOSPHOR BRONZE
 PLATING: Sn-Pb OVER Cu
 FITTING NAIL: PHOSPHOR BRONZE
 PLATING: Sn-Pb OVER Cu
3. 基準面 [E] からのソルダーテールとフィッティングネイルの半田付面のズレ量は、上方向に0.1MAX.、下方向0.15MAX.とする。
 MISALIGNMENT OF SOLDER TAIL AND FITTING NAIL FROM [E]: UPPER DIRECTION 0.1 MAX., LOWER DIRECTION 0.15 MAX.
4. 偶数極に適用。
 APPLY FOR EVEN CKT.

角度 ANGLE	±3°			
30以上 OVER	±0.3	B	変更 (JC80048)	9/17/15
10以上 30 UNDER	±0.25	A	変更 (J40668)	9/17/15
10 UNDER	±0.2	O	新規作成 (J40449)	9/17/15
一般公差 GENERAL TOLERANCES				

材料 MATERIAL	注記参照 SEE NOTES
仕上げ FINISH	—
適用電線範囲 WIRE RANGE	—
被覆外径 INS. RANGE	—
DRAWN BY: S. AIHARA	CHK'D BY: M. FUKUSHIMA
APP'D BY: M. FUKUSHIMA	尺度 SCALE 10 : 1

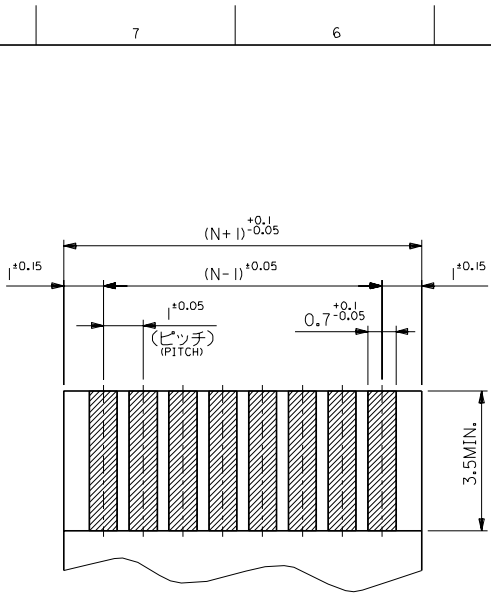
MOLEX-JAPAN CO., LTD.
 日本モレックス株式会社

REVISE ONLY ON CAD SYSTEM

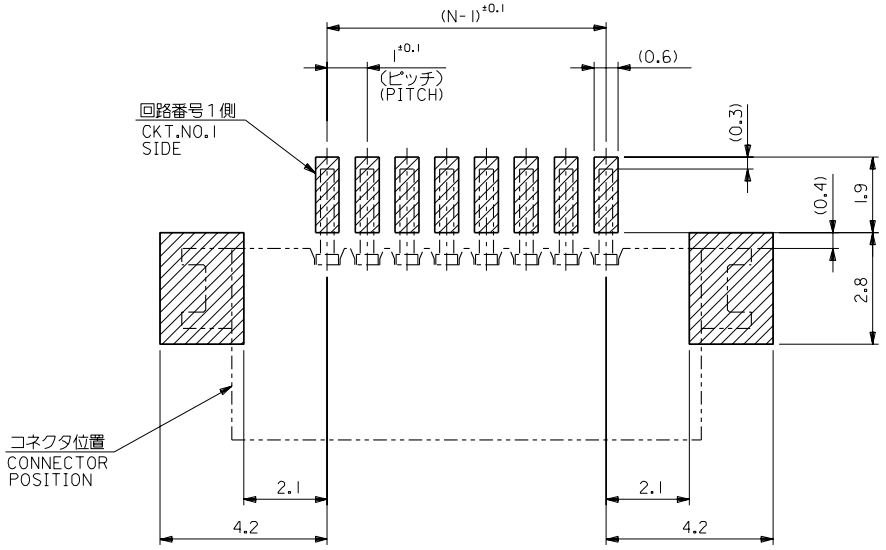
TITLE 名称
 I/O FFC CONN.
 NON Z.I.F. SMT. R/A
 (UPPER CONTACT)

DWG. NO. (SHEET 1 OF 2) REV
 SD-52793-***10

DWG. NO. SD-52793-**10
 DIMENSIONS IN METRIC DO NOT SCALE DRAWING



(仕上がり厚さ0.3^{±0.03})
 THICKNESS
 適合FPC推奨寸法
 APPLICABLE FPC
 RECOMMENDED DIMENSION.



参考基板レイアウト (マウント面)
 RECOMMENDED P.C.BOARD
 PATTERN DIMENSION. (REF.)
 (MOUNTING AREA)

角度 ANGLE	±3°				材料 MATERIAL	—
30以上 OVER	±0.3	B	変更 REVISION	JC80048	仕上げ FINISH	—
10以上 未満 UNDER	±0.25	A	変更 REVISION	(J40668)	適用電線範囲 WIRE RANGE	—
10未満 UNDER	±0.2	O	新規作成 PROPOSE	(J40449)	被覆外径 INS. RANGE	—
一般公差 GENERAL TOLERANCES			記号 LTR	変更内容 REVISION RECORD	DATE	尺度 SCALE 10 : 1

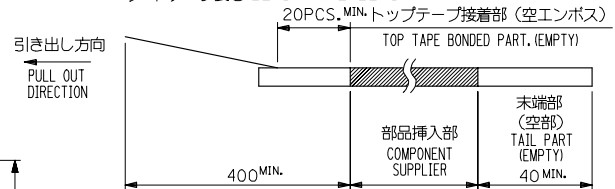
MOLEX-JAPAN CO.,LTD.
 日本モレックス株式会社
 REVISE ONLY ON CAD SYSTEM
 TITLE 名称
 I.O FFC CONN.
 NON Z.I.F. SMT. R/A
 (UPPER CONTACT)
 DWG. NO. (SHEET 2 OF 2) REV B
 SD-52793-**10

THIS DRAWING CONTAINS INFORMATION THAT IS PROPRIETARY TO MOLEX/JAPAN AND SHOULD NOT BE USED WITHOUT WRITTEN PERMISSION
 本図面は日本モレックス(株)の所有する情報を含むもので 当社の許可なく複製を禁止する。
 EN-01C(032)MXJ-32

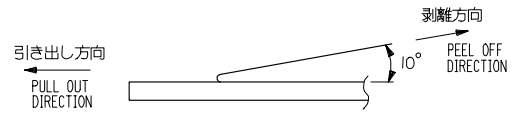
10 9 8 7 6 5 4 3 2 1

NOTES

- 製品詳細寸法については図面 SD-52793-***10 を参照下さい。
RE DETAILED DIMENSION, SEE SD-52793-***10
- 梱包数量：1000個/リール
NUMBER OF CONNECTORS：1000PCS/REEL
- リードテープ長さ LEAD TAPE LENGTH

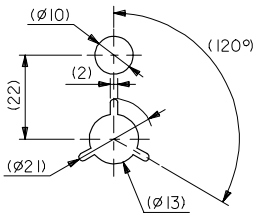
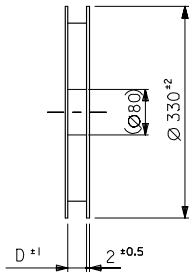
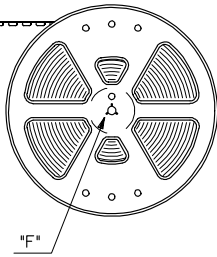


- トップテープの剥離強度：0.1N ~ 0.7N(10.2gf ~ 71.4gf)
(剥離方向は下図参照)
尚、本規格値は出荷時に適用。(但し、輸送時に剥離が発生しないこと。)
PEELING OFF FORCE OF TOP TAPE：0.1N ~ 0.7N(10.2gf ~ 71.4gf)
(PEELING DIRECTION AS SHOWN IN FOLLOWING FIG.)
THIS REQUIREMENT SHOULD BE APPLIED AT SHIPMENT.
PEEL OFF SHOULD NOT BE ALLOWED, DURING TRANSPORTATION.



- 材料 (MATERIAL)
キャリアテープ (CARRIER TAPE)：ポリプロピレン (POLYPROPYLENE)
トップテープ (TOP TAPE)：PET, PE, PEF
リール (REEL)：ポリスチレン (P.S) <リサイクル材を含む>
POLYSTYRENE (PS) <RECYCLE MATERIAL CONTAINED>

引き出し方向
PULL OUT
DIRECTION



DETAIL 'F'

REVISED REV. NO. J2005-3580 DRAWN BY CHKD BY APPR. BY 2005/06/03 2005/06/06 2005/06/09	GENERAL TOLERANCES (UNLESS SPECIFIED)		DIMENSION STYLE MM ONLY		SCALE ---	52793-***90	MODEL NO.
	10 UNDER	±0.2	DRAWN BY T. YASUI	DATE '96/05/29	TITLE	DESIGN UNITS METRIC	THIRD ANGLE PROJECTION
	10 OVER 30 UNDER	±0.25	CHECKED BY S. KUNISHI	DATE '00/12/06	1.0 FFC CONN ASSY NON ZIF SMT RA UPR CONTACT EMBSTP PKG MOLEX INCORPORATED	MATERIAL NO.	DOCUMENT NO. SD-52793-013
	30 OVER	±0.3	APPROVED BY M. FUKUSHIMA	DATE '00/12/06			
ANGULAR ±3 °		DRAFT WHERE APPLICABLE MUST REMAIN WITHIN DIMENSIONS		SEE CHART	THIS DRAWING CONTAINS INFORMATION THAT IS PROPRIETARY TO MOLEX INCORPORATED AND SHOULD NOT BE USED WITHOUT WRITTEN PERMISSION		

10 9 8 7 6 5 4 3 2 1

F

E

D

C

B

A

F

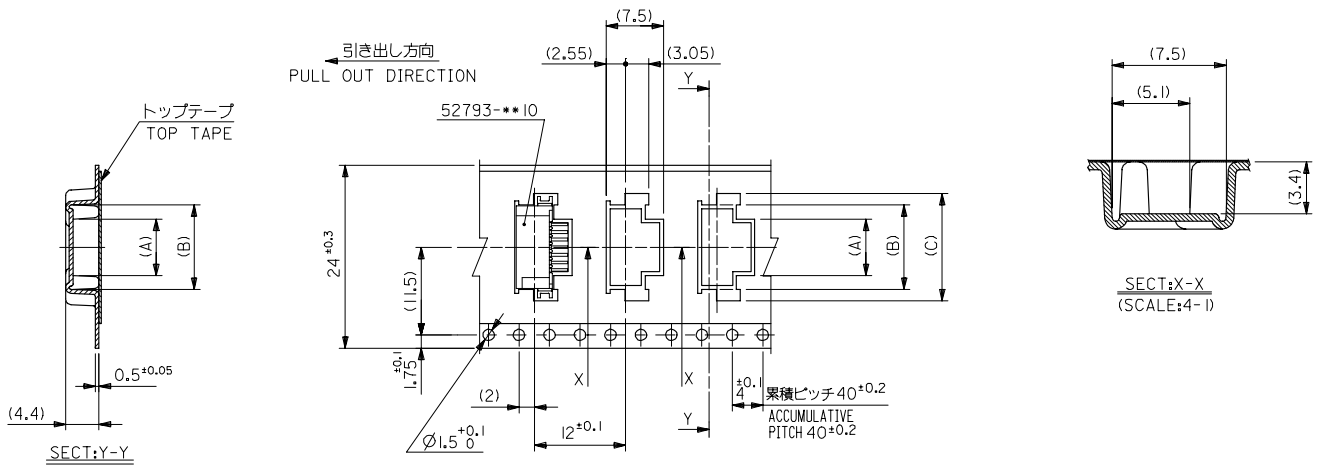
E

D

C

B

A



24mm幅キャリアテープ
24mm WIDTH CARRIER TAPE

52793-x*90	キャリアテープ幅 CARRIER TAPE WIDTH	D	(C)	(B)	(A)	MATERIAL NO.	種別 CKT.
24	25.5	18.1	15.1	11.4	52793-1190	11	
		17.1	14.1	10.4	52793-1090	10	
		16.1	13.1	9.4	52793-0990	9	
		15.1	12.1	8.4	52793-0890	8	
		14.1	11.1	7.4	52793-0790	7	
		13.1	10.1	6.4	52793-0690	6	
		12.1	9.1	5.4	52793-0590	5	
		11.1	8.1	4.4	52793-0490	4	

REVISED IEC NO. J2005-3580 DRAWN BY T. YASUI CHKD BY CHIKO KATOYODA APPR. BY NIKITA 2005/06/03 2005/06/06 2005/06/09	GENERAL TOLERANCES (UNLESS SPECIFIED)		DIMENSION STYLE MM ONLY		SCALE ---	DESIGN UNITS METRIC	THIRD ANGLE PROJECTION
	10 UNDER	± ---	DRAWN BY T. YASUI	DATE '96/05/29	TITLE 1.0 FFC CONN ASSY NON ZIF SMT RA UPR CONTACT EMBSTP PKG		
	10 OVER 30 UNDER	± ---	CHECKED BY S. KUNISHI	DATE '00/12/06	MOLEX INCORPORATED		
	30 OVER	± ---	APPROVED BY M. FUKUSHIMA	DATE '00/12/06	DOCUMENT NO. SD-52793-013		
	ANGULAR ± --- °	DRAFT WHERE APPLICABLE MUST REMAIN WITHIN DIMENSIONS		MATERIAL NO. SEE CHART	SHEET NO. 2 OF 5		
				SIZE A3	THIS DRAWING CONTAINS INFORMATION THAT IS PROPRIETARY TO MOLEX INCORPORATED AND SHOULD NOT BE USED WITHOUT WRITTEN PERMISSION		

10 9 8 7 6 5 4 3 2 1

F F

E E

D D

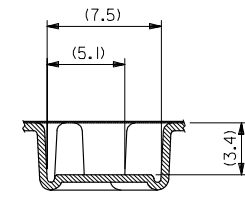
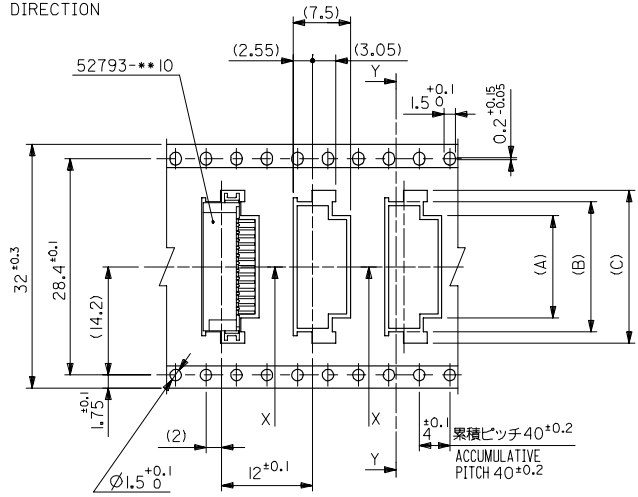
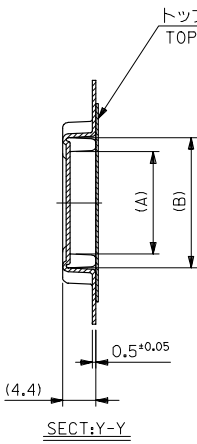
C C

B B

A A

9 8 7 6 5 4 3 2 1

引き出し方向
PULL OUT DIRECTION



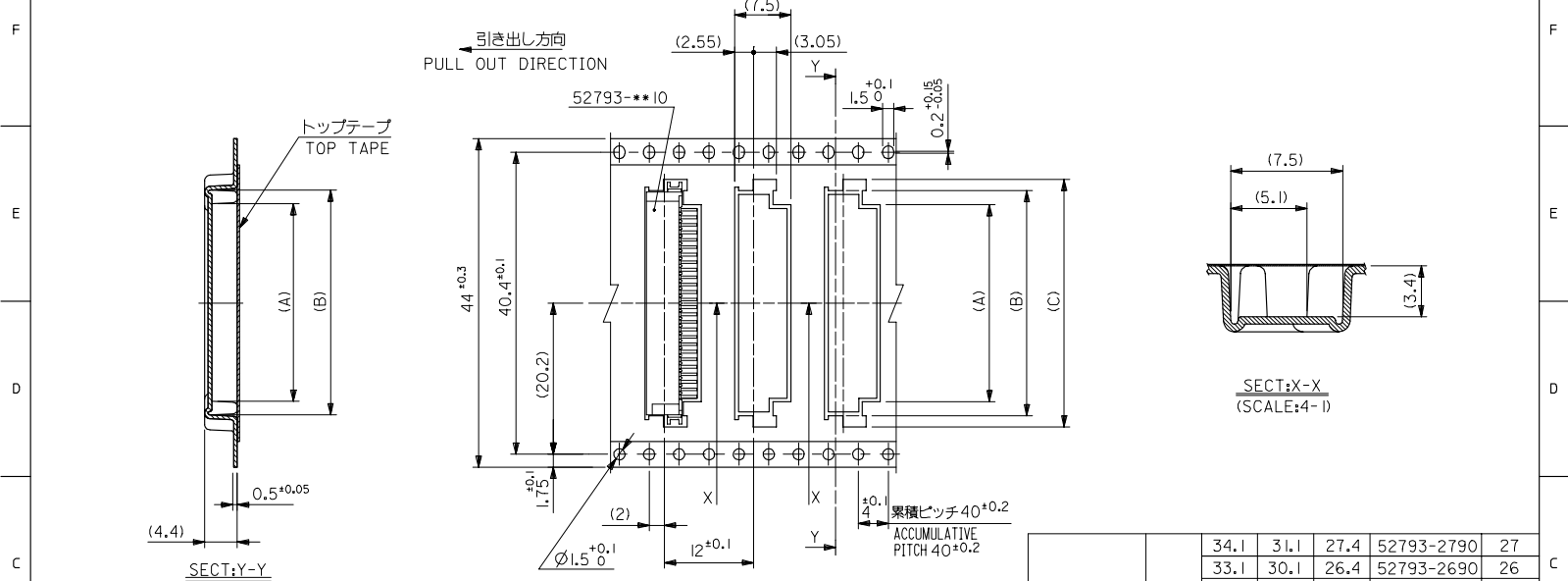
32mm幅キャリアテープ
32mm WIDTH CARRIER TAPE

52793-xx90
MODEL NO.

32	33.5	23.1	20.1	16.4	52793-1690	16
		22.1	19.1	15.4	52793-1590	15
		21.1	18.1	14.4	52793-1490	14
		20.1	17.1	13.4	52793-1390	13
		19.1	16.1	12.4	52793-1290	12
キャリアテープ幅 CARRIER TAPE WIDTH		D	(C)	(B)	(A)	MATERIAL NO. 機種 CKT.

REVISED IEC NO. J2005-3580 DRAWN BY CHKD BY APPR. BY 2005/06/03 2005/06/06 2005/06/09	GENERAL TOLERANCES (UNLESS SPECIFIED)		DIMENSION STYLE MM ONLY		SCALE ---	DESIGN UNITS METRIC	THIRD ANGLE PROJECTION
	10 UNDER	± ---	DRAWN BY T. YASUI	DATE '96/05/29	TITLE 1.0 FFC CONN ASSY NON ZIF SMT RA UPR CONTACT EMBSTP PKG		
	10 OVER 30 UNDER	± ---	CHECKED BY S. KUNISHI	DATE '00/12/06	MOLEX MOLEX INCORPORATED		
	30 OVER	± ---	APPROVED BY M. FUKUSHIMA	DATE '00/12/06	DOCUMENT NO. SD-52793-013		
	ANGULAR	± --- °	MATERIAL NO.	SEE CHART	SHEET NO. 3 OF 5		
DRAFT WHERE APPLICABLE MUST REMAIN WITHIN DIMENSIONS		SIZE A3	THIS DRAWING CONTAINS INFORMATION THAT IS PROPRIETARY TO MOLEX INCORPORATED AND SHOULD NOT BE USED WITHOUT WRITTEN PERMISSION				

10 9 8 7 6 5 4 3 2 1



44mm 幅キャリアテープ
44mm WIDTH CARRIER TAPE

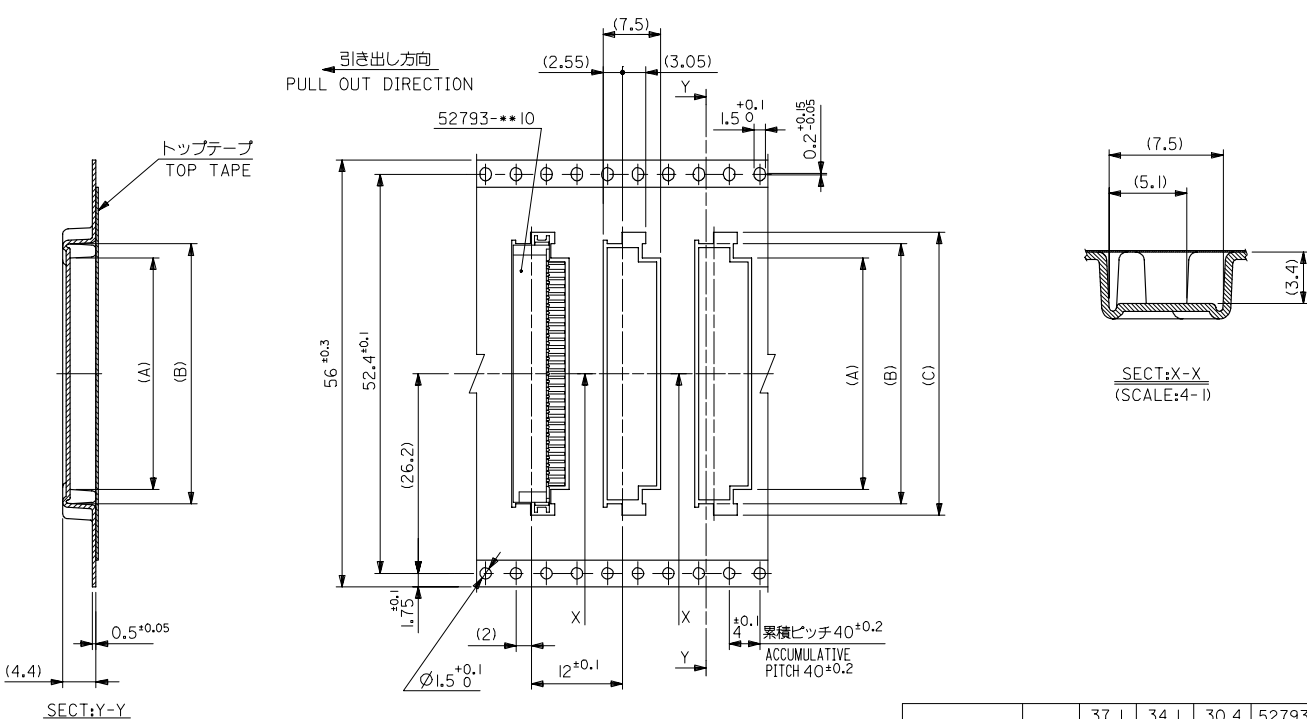
52793-x*90	キャリアテープ幅 CARRIER TAPE WIDTH	D	(C)	(B)	(A)	MATERIAL NO.	極数 CKT.
44	45.5						

34.1	31.1	27.4	52793-2790	27
33.1	30.1	26.4	52793-2690	26
32.1	29.1	25.4	52793-2590	25
31.1	28.1	24.4	52793-2490	24
30.1	27.1	23.4	52793-2390	23
29.1	26.1	22.4	52793-2290	22
27.1	24.1	20.4	52793-2090	20
26.1	23.1	19.4	52793-1990	19
25.1	22.1	18.4	52793-1890	18
24.1	21.1	17.4	52793-1790	17

REVISED IEC NO. J2005-3580 DRAWN BY T. YASUI CHKD BY CHIKO KATOYODA APPR. BY NIKITA 2005/06/03 2005/06/06 2005/06/09	GENERAL TOLERANCES (UNLESS SPECIFIED)		DIMENSION STYLE MM ONLY		SCALE ---	DESIGN UNITS METRIC	THIRD ANGLE PROJECTION
	10 UNDER	± ---	DRAWN BY T. YASUI	DATE '96/05/29	TITLE 1.0 FFC CONN ASSY NON ZIF SMT RA UPR CONTACT EMBSTP PKG		
	10 OVER 30 UNDER	± ---	CHECKED BY S. KUNISHI	DATE '00/12/06	MOLEX INCORPORATED		
	30 OVER	± ---	APPROVED BY M. FUKUSHIMA	DATE '00/12/06	DOCUMENT NO. SD-52793-013		
ANGULAR ± --- °		DRAFT WHERE APPLICABLE MUST REMAIN WITHIN DIMENSIONS		MATERIAL NO. SEE CHART		SHEET NO. 4 OF 5	
SIZE A3				THIS DRAWING CONTAINS INFORMATION THAT IS PROPRIETARY TO MOLEX INCORPORATED AND SHOULD NOT BE USED WITHOUT WRITTEN PERMISSION			

10 9 8 7 6 5 4 3 2 1

F E D C B A



56mm幅キャリアテープ
56mm WIDTH CARRIER TAPE

56	57.5	37.1	34.1	30.4	52793-3090	30
		36.1	33.1	29.4	52793-2990	29
		35.1	32.1	28.4	52793-2890	28
52793-x*90	キャリアテープ幅 CARRIER TAPE WIDTH	D	(C)	(B)	(A)	MATERIAL NO. 極数 CKT.

REVISED IEC NO. J2005-3580 DRAWN BY CHIKO-KOYODA APPR. NIKITA 2005/06/03 2005/06/06 2005/06/09	GENERAL TOLERANCES (UNLESS SPECIFIED)		DIMENSION STYLE MM ONLY		SCALE ---	DESIGN UNITS METRIC	THIRD ANGLE PROJECTION
	10 UNDER	±---	DRAWN BY T. YASUI	DATE '96/05/29	TITLE 1.0 FFC CONN ASSY NON ZIF SMT RA UPR CONTACT EMBSTP PKG		
	10 OVER 30 UNDER	±---	CHECKED BY S. KUNISHI	DATE '00/12/06	MOLEX INCORPORATED		
	30 OVER	±---	APPROVED BY M. FUKUSHIMA	DATE '00/12/06	DOCUMENT NO. SD-52793-013		
	ANGULAR	±--- °	MATERIAL NO. SEE CHART		SHEET NO. 5 OF 5		
DRAFT WHERE APPLICABLE MUST REMAIN WITHIN DIMENSIONS			SIZE A3		THIS DRAWING CONTAINS INFORMATION THAT IS PROPRIETARY TO MOLEX INCORPORATED AND SHOULD NOT BE USED WITHOUT WRITTEN PERMISSION		