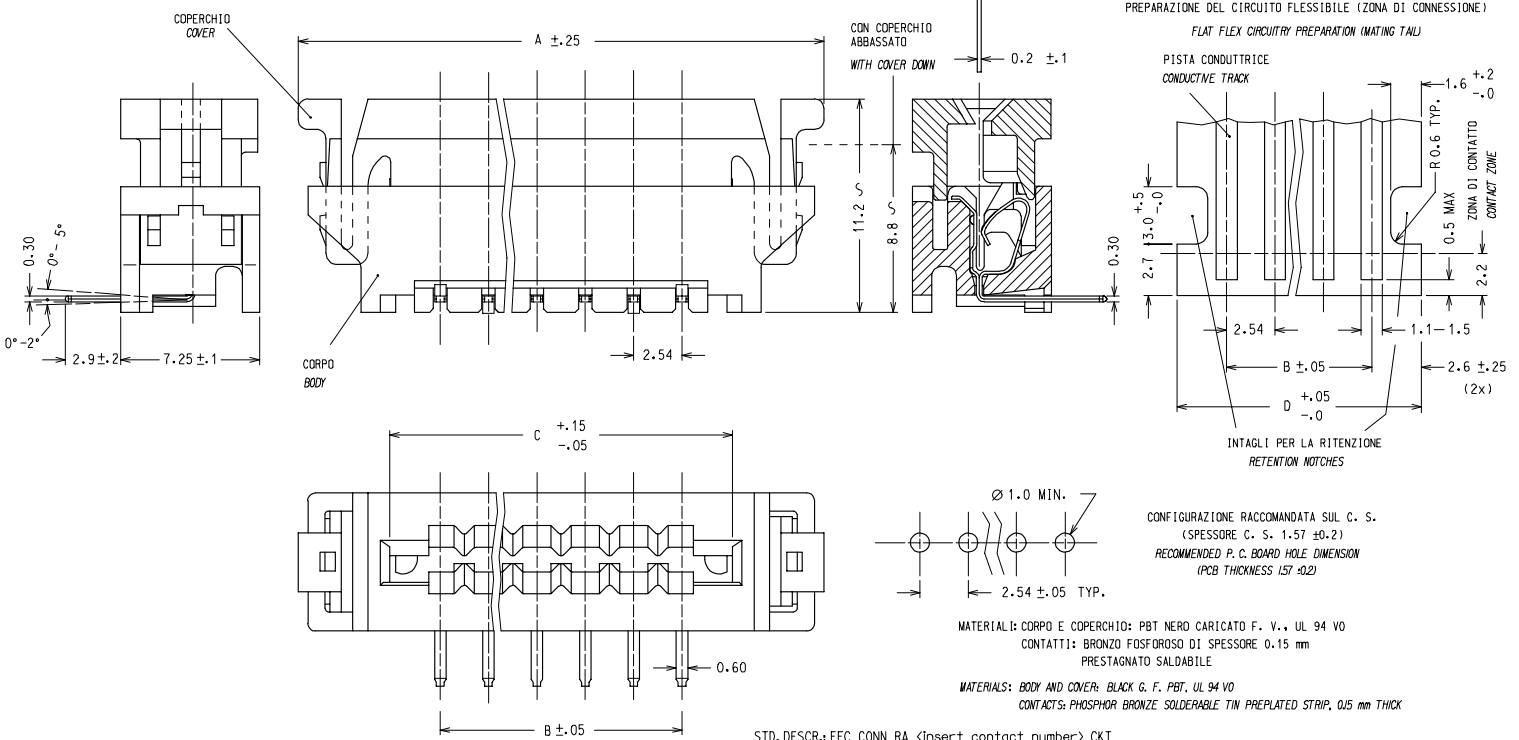


10 9 8 7 6 5 4 3 2 1

COPERCHIO ALZATO: I CONTATTI SONO APERTI PER UN AGEVOLE INSERIMENTO DEL CIRCUITO FLESSIBILE
 COVER UP: CONTACTS ARE OPEN FOR AN EASY INSERTION OF THE FLEX CIRCUITRY
 COPERCHIO ABBASSATO: I CONTATTI SONO PREMITI CONTRO LE PISTE
 COVER DOWN: CONTACTS ARE CLOSED ON THE TRACKS

CIRCUITO FLESSIBILE (SPESSORE TIPICO)
 FLEX CIRCUITRY (TYPICAL THICKNESS)

PREPARAZIONE DEL CIRCUITO FLESSIBILE (ZONA DI CONNESSIONE)
 FLAT FLEX CIRCUITRY PREPARATION (MATING TAIL)



CONFIGURAZIONE RACCOMANDATA SUL C. S.
 (SPESSORE C. S. 1.57 ±0.2)
 RECOMMENDED P. C. BOARD HOLE DIMENSION
 (PCB THICKNESS 157 ±0.2)

MATERIALI: CORPO E COPERCHIO: PBT NERO CARICATO F. V., UL 94 VO
 CONTATTI: BRONZO FOSFOROSO DI SPESSORE 0.15 mm
 PRESTAGNATO SALDABILE
 MATERIALS: BODY AND COVER: BLACK G. F. PBT, UL 94 VO
 CONTACTS: PHOSPHOR BRONZE SOLDERABLE TIN PREPLATED STRIP, 0.15 mm THICK

STD. DESCR.: FFC CONN RA (insert contact number) CKT

NOTE: 1) IL PRODOTTO VIENE FORNITO IN TUBI (VEDI FOGLIO 2/2)
 2) CARATTERISTICHE TECNICHE E FUNZIONALI COME DA PS 90500.
 LUNGEZZA MINIMA DI ESPOSIZIONE DELLE PISTE
 NOTE: 1) PRODUCT WILL BE SUPPLIED PACKAGED IN A TUBE (SEE SHEET 2/2)
 2) TECHNICAL CHARACTERISTICS AS INDICATED IN PS90500.
 MINIMUM EXPOSED LENGTH OF TRACKS

| | | |
|---------------------|------------|---------------------------------------|
| EC NO. Z2005-0177 | 2005/05/19 | QUALITY SYMBOLS |
| DRAWN: SBARBIERI | 2005/05/20 | GENERAL TOLERANCES (UNLESS SPECIFIED) |
| CHECKED: RACMANDANO | 2005/05/20 | |
| APPROVED: FBI SELLO | 2005/05/20 | |
| DESCRIPTION | | |
| REV | | |

| GENERAL TOLERANCES (UNLESS SPECIFIED) | | DIMENSION STYLE | |
|------------------------------------------------------|-------|-----------------|------------|
| mm | INCH | MM ONLY | |
| 4 PLACES ± --- | ± --- | DRAWN BY | DATE |
| 3 PLACES ± --- | ± --- | SBARBIERI | 1993/09/09 |
| 2 PLACES ± 0.05 | ± --- | CHECKED BY | DATE |
| 1 PLACE ± 0.10 | ± --- | | |
| ANGULAR ± 2 ° | | APPROVED BY | DATE |
| | | MPREVIATO | 1993/09/09 |
| DRAFT WHERE APPLICABLE MUST REMAIN WITHIN DIMENSIONS | | MATERIAL NO. | SEE SHT 2 |
| | | SIZE | A3 |

| | | | | |
|-------------------------------------------------------------------------------------------------------------------------------|-----|--------------|--------------------|------------------------|
| SCALE | 5:1 | DESIGN UNITS | METRIC | FIRST ANGLE PROJECTION |
| FFC CONNECTOR RIGHT ANGLE VERSION | | | | |
| MOLEX | | | MOLEX INCORPORATED | |
| DOCUMENT NO. | | SD-90500-006 | | SHEET NO. |
| | | | | 1 OF 2 |
| THIS DRAWING CONTAINS INFORMATION THAT IS PROPRIETARY TO MOLEX INCORPORATED AND SHOULD NOT BE USED WITHOUT WRITTEN PERMISSION | | | | |

9 8 7 6 5 4 3 2 1

10 9 8 7 6 5 4 3 2 1

| N° . DI CODICE PART. NO. | ATTREZZAGGIO TOOLING | N° . VIE CCT NO. | DIM "A" | DIM "B" | DIM "C" | DIM "D" | N° . CONN./TUBO CONN. NO./TUBE | N° . CONN./SCATOLA CONN. NO./BOX (SPQ) |
|-----------------------------|------------------------------|---------------------|---------|---------|---------|---------|-----------------------------------|-------------------------------------------|
| 90500-4002 | NON ATTREZZATO NOT TOOLED | 2 | | | | | | |
| 90500-4003 | " | 3 | | | | | | |
| 90500-4004 | ATTREZZATO TOOLED | 4 | 22.52 | 7.62 | 12.92 | 12.82 | 24 | 3456 |
| 90500-4005 | " | 5 | 25.06 | 10.16 | 15.46 | 15.36 | 21 | 3024 |
| 90500-4006 | " | 6 | 27.60 | 12.70 | 18.00 | 17.90 | 19 | 2736 |
| 90500-4007 | " | 7 | 30.14 | 15.24 | 20.54 | 20.44 | 17 | 2448 |
| 90500-4008 | " | 8 | 32.68 | 17.78 | 23.08 | 22.98 | 16 | 2304 |
| 90500-4009 | " | 9 | 35.22 | 20.32 | 25.62 | 25.52 | 15 | 2160 |
| 90500-4010 | " | 10 | 37.76 | 22.86 | 28.16 | 28.06 | 14 | 2016 |
| 90500-4011 | " | 11 | 40.30 | 25.40 | 30.70 | 30.60 | 13 | 1872 |
| 90500-4012 | " | 12 | 42.84 | 27.94 | 33.24 | 33.14 | 12 | 1728 |
| 90500-4013 | " | 13 | 45.38 | 30.48 | 35.78 | 35.68 | 11 | 1584 |
| 90500-4014 | " | 14 | 47.92 | 33.02 | 38.32 | 38.22 | 11 | 1584 |
| 90500-4015 | " | 15 | 50.46 | 35.56 | 40.86 | 40.76 | 10 | 1440 |
| 90500-4016 | " | 16 | 53.00 | 38.10 | 43.40 | 43.30 | 10 | 1440 |
| 90500-4017 | " | 17 | 55.54 | 40.64 | 45.94 | 45.84 | 9 | 1296 |
| 90500-4018 | " | 18 | 58.08 | 43.18 | 48.48 | 48.38 | 9 | 1296 |
| 90500-4019 | " | 19 | 60.62 | 45.72 | 51.02 | 50.92 | 8 | 1152 |
| 90500-4020 | " | 20 | 63.16 | 48.26 | 53.56 | 53.46 | 8 | 1152 |

| | | | | | | | | | | | | | | | | | | | | | |
|------------------------------------------------------------------------------------------------------------------------------------------|-----------------|--------------------------------------------------------------------------------------------------------------------------------------------------------------------------------------------------------------------------------------------------------------------------------------------------------------------------------------------------|--------------------|----------------------------------------------------------------------------------------------------------------------------------|------------------------------|---------------------|-------|-------|----------|--------|-------|---------|--------|-------|---------------|--|--|----------------------------|--------------|------------------------|---------------------------|
| IEC NO. Z2005-0177 DRAWN: SBARBIER 2005/05/19 CHECKED: RASCIANO 2005/05/20 APPROVED: FBI SELLO 2005/05/20 DESCRIPTION REV | QUALITY SYMBOLS | GENERAL TOLERANCES (UNLESS SPECIFIED) <table border="1"> <tr><td>4 PLACES</td><td>± ---</td><td>± ---</td></tr> <tr><td>3 PLACES</td><td>± ---</td><td>± ---</td></tr> <tr><td>2 PLACES</td><td>± 0.05</td><td>± ---</td></tr> <tr><td>1 PLACE</td><td>± 0.10</td><td>± ---</td></tr> <tr><td colspan="3">ANGULAR ± 2 °</td></tr> </table> | 4 PLACES | ± --- | ± --- | 3 PLACES | ± --- | ± --- | 2 PLACES | ± 0.05 | ± --- | 1 PLACE | ± 0.10 | ± --- | ANGULAR ± 2 ° | | | DIMENSION STYLE MM ONLY | SCALE 5:1 | DESIGN UNITS METRIC | FIRST ANGLE PROJECTION |
| | 4 PLACES | | ± --- | ± --- | | | | | | | | | | | | | | | | | |
| | 3 PLACES | | ± --- | ± --- | | | | | | | | | | | | | | | | | |
| | 2 PLACES | | ± 0.05 | ± --- | | | | | | | | | | | | | | | | | |
| 1 PLACE | ± 0.10 | ± --- | | | | | | | | | | | | | | | | | | | |
| ANGULAR ± 2 ° | | | | | | | | | | | | | | | | | | | | | |
| | | DRAWN BY SBARBIER I | DATE 1993/09/09 | TITLE FFC CONNECTOR RIGHT ANGLE VERSION | | | | | | | | | | | | | | | | | |
| | | CHECKED BY | DATE | MOLEX INCORPORATED | | | | | | | | | | | | | | | | | |
| | | APPROVED BY MPREVIATO | DATE 1993/09/09 | MATERIAL NO. | DOCUMENT NO. SD-90500-006 | SHEET NO. 2 OF 2 | | | | | | | | | | | | | | | |
| DRAFT WHERE APPLICABLE MUST REMAIN WITHIN DIMENSIONS | | SEE TABLE | | THIS DRAWING CONTAINS INFORMATION THAT IS PROPRIETARY TO MOLEX INCORPORATED AND SHOULD NOT BE USED WITHOUT WRITTEN PERMISSION | | | | | | | | | | | | | | | | | |

fb_frame_A3_P_ME_F
Rev. D 2004/04/02

9 8 7 6 5 4 3 2 1